

# Association of smoking cessation after new-onset type 2 diabetes with overall and cause-specific mortality among Korean men: a nationwide population-based cohort study

Jae Woo Choi,<sup>1</sup> Euna Han ,<sup>1</sup> Tae Hyun Kim <sup>2</sup>

**To cite:** Choi JW, Han E, Kim TH. Association of smoking cessation after new-onset type 2 diabetes with overall and cause-specific mortality among Korean men: a nationwide population-based cohort study. *BMJ Open Diab Res Care* 2020;**8**:e001249. doi:10.1136/bmjdr-2020-001249

► Additional material is published online only. To view please visit the journal online (<http://dx.doi.org/10.1136/bmjdr-2020-001249>).

Received 3 February 2020

Revised 8 May 2020

Accepted 2 June 2020



© Author(s) (or their employer(s)) 2020. Re-use permitted under CC BY-NC. No commercial re-use. See rights and permissions. Published by BMJ.

<sup>1</sup>College of Pharmacy, Yonsei University, Incheon, South Korea

<sup>2</sup>Graduate School of Public Health, Yonsei University, Seoul, South Korea

## Correspondence to

Dr Tae Hyun Kim;  
thkim@yuhs.ac

## ABSTRACT

**Introduction** This study aimed to examine the association between smoking cessation after new-onset type 2 diabetes and overall and cause-specific mortality risks among Korean men.

**Research design and methods** The Korean National Health Insurance Service-National Health Screening Cohort database was searched, and 13 377 Korean men aged ≥40 years diagnosed with new-onset type 2 diabetes between 2004 and 2007 were included and followed up until 2013. We defined smoking status changes by comparing participants' answers in the last survey before diagnosis to those in the first survey after diagnosis. We estimated the adjusted HR (AHR) and 95% CI for mortality risk using multivariable Cox proportional hazards regression models.

**Results** We identified 1014 all-cause mortality events (cancer, n=406 and cardiovascular disease (CVD), n=184) during an average follow-up duration of 7.2 years. After adjustment for all confounding factors, the reduced risk of all-cause mortality was more significant among short-term quitters (AHR 0.78; 95% CI 0.64 to 0.95), long-term quitters (AHR 0.68; 95% CI 0.54 to 0.85), and never smokers (AHR 0.66; 95% CI 0.56 to 0.78) compared with current smokers (p for trend <0.001). The lower risk of mortality from cancer was significant among the short-term quitters (AHR 0.60; 95% CI 0.44 to 0.83), long-term quitters (AHR 0.67; 95% CI 0.46 to 0.90), and never smokers (AHR 0.50; 95% CI 0.39 to 0.65) compared with current smokers (p for trend <0.001). There was no significant association between changes in smoking status and death from CVD. Smoking cessation after diagnosis in non-obese individuals (AHR 0.73; 95% CI 0.58 to 0.92) and exercisers (AHR 0.54; 95% CI 0.38 to 0.76) was significantly associated with reduced mortality risk than current smoking.

**Conclusions** Smoking cessation after new-onset type 2 diabetes was associated with reduced mortality risk.

## INTRODUCTION

Individuals with type 2 diabetes are at a higher mortality risk than those without diabetes.<sup>1</sup> Smoking is a leading cause of premature mortality in patients with diabetes and the general population.<sup>2</sup> A previous study

## Significance of this study

### What is already known about this subject?

- Although previous studies have demonstrated that quitting smoking decreases the risk of all-cause mortality in patients with diabetes, the effect of smoking cessation after new-onset type 2 diabetes on all-cause and cause-specific mortality compared with current smoking has not been assessed.
- There is limited evidence on the association between smoking cessation and mortality stratified by body mass index and exercise.

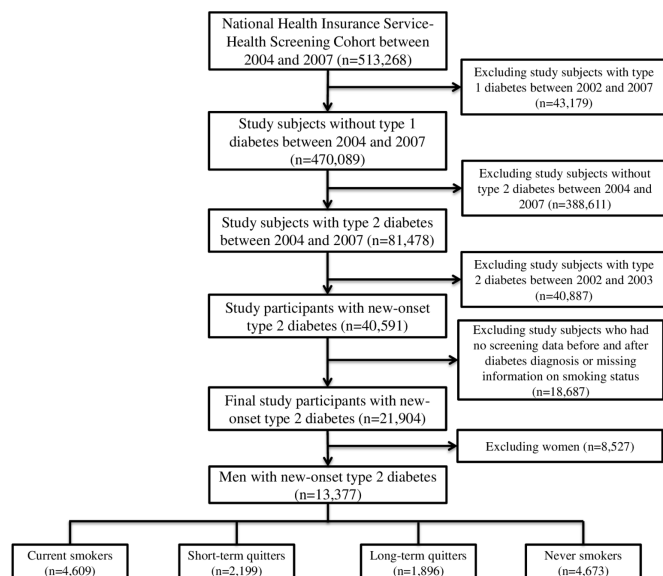
### What are the new findings?

- Smoking cessation after new-onset type 2 diabetes was significantly associated with reduced mortality risk compared with current smoking.
- Smoking cessation after new-onset type 2 diabetes was associated with a reduced risk of mortality from cancer compared with current smoking.
- Smoking cessation after new-onset type 2 diabetes in non-obese and exerciser groups was associated with reduced mortality risk compared with current smoking.

### How might these results change the focus of research or clinical practice?

- This study may provide additional evidence for clinicians for advising patients with type 2 diabetes to quit smoking.

involving women with type 2 diabetes has shown that current smokers have an increased mortality risk compared with never smokers.<sup>3</sup> A meta-analysis has revealed that smoking amplifies the risk of mortality and cardiovascular events in patients with diabetes.<sup>4</sup> Another meta-analysis has also indicated that active smoking is associated with significantly increased risks of total mortality and cardiovascular events compared with never smoking patients with diabetes.<sup>5</sup>



**Figure 1** Flow chart of the study participants.

Although the negative health effects of smoking last long, smoking cessation appears to reduce the risk of adverse health outcomes on a long-term basis.<sup>6,7</sup> However, the potential reduction in mortality risk by quitting smoking is not clear in patients with type 2 diabetes. A prior study has examined the effects of quitting smoking on mortality risk in patients with diabetes.<sup>8</sup> Another study has assessed the association of quitting smoking and mortality in women with type 2 diabetes.<sup>3</sup> A recent study has examined the effects of quitting smoking and body mass index (BMI) changes on all-cause mortality in patients with diabetes.<sup>9</sup> However, the effects of smoking cessation after new-onset type 2 diabetes on overall and cause-specific mortality have not been investigated.

Smoking cessation is a major target for diabetes treatment.<sup>10</sup> However, many patients continue to smoke even after being diagnosed with diabetes mellitus,<sup>11</sup> and the success rate of smoking cessation interventions among patients with diabetes is low (approximately 20%).<sup>12</sup> This study may provide additional evidence for the likely benefits of quitting smoking after the diagnosis of type 2 diabetes.

We examined the potential benefits of smoking cessation after new-onset type 2 diabetes in terms of reducing the risk of all-cause mortality using nationwide retrospective cohort data. We also explored the association between smoking cessation and deaths from cancer and cardiovascular disease (CVD) because cancer and CVD are the major causes of worldwide deaths,<sup>13</sup> for which smoking is an important risk factor.<sup>14,15</sup> Further, we identified the relationship between smoking cessation and all-cause mortality stratified by BMI and exercise.

## MATERIALS AND METHODS

### Data and study sample

The study data were extracted from the Korean National Health Insurance Service (NHIS)-National Health

Screening Cohort (HEALS) database between 2002 and 2013.<sup>16</sup> The Korean NHIS operates a mandatory health insurance system and covers approximately 97% of the Korean population. All subscribers aged 40–79 years are required to have a standardized biannual health screening (annual for manual workers). The NHIS-HEALS was extracted using a simple random sampling method to establish a representative sample and comprised 10% (514 866 individuals) of all health examination participants from 2002 to 2003 who were followed up until 2013. The NHIS-HEALS data include demographics and clinical information regarding diagnoses, treatments, and prescribed drugs for all visits (inpatient, outpatient, and pharmacy visits) to healthcare facilities by cohort subjects. The NHIS-HEALS data also include national health screening information, performed biennially from 2002 to 2013, consisting of chest radiographic examinations, regular blood tests, a survey questionnaire on medical history, and physical examinations.

Among the 513 268 participants from the NHIS-HEALS between 2004 and 2007, we excluded study subjects with type 1 diabetes between 2002 and 2007 ( $n=43\,179$ ). We also excluded subjects without type 2 diabetes to solely recruit patients with type 2 diabetes as study participants between 2004 and 2007 ( $n=388\,611$ ). Type 2 diabetes was defined as the existence of any one of the following criteria: (1) fasting blood glucose level of  $\geq 7$  mmol/L (126 mg/dL); (2) physician's diagnosis of type 2 diabetes (the International Classification of Diseases 10th Revision (ICD-10) code: E11–E14) more than twice within 6 months; (3) treatment with an oral hyperglycemic medication or insulin (online supplementary table 1). We also excluded subjects with type 2 diabetes between 2002 and 2003 to include only patients with new-onset type 2 diabetes ( $n=40\,887$ ). Finally, we excluded subjects who had no screening data before and after the diagnosis of diabetes or had missing information on smoking status ( $n=18\,687$ ) and excluded women ( $n=8\,527$ ) because there was a significantly low proportion of current women smokers at baseline (below 5%). Finally, 13 377 subjects with newly diagnosed type 2 diabetes were included (figure 1).

### Measurement

The dependent variables in this study were all-cause and cause-specific mortality. The cohort database was linked to the death registration database of Statistics Korea, which included the causes and dates of mortality. The various causes of death were coded according to ICD-10. Cause-specific mortality was classified as deaths from cancer (ICD-10 C00–C99) and CVD (ICD-10 I00–I99) based on previous studies.<sup>1,17</sup> The survival duration was measured in days, and all subjects were followed up until mortality, withdrawal from the medical security system, or the end of 2013, whichever occurred first. The percentage of cases in which the status was not available at the end of the follow-up was approximately 0.5%.

We used the smoking status assessed from the self-reported questionnaire surveyed in the national health screening as the independent variable. The questionnaire items regarding the smoking status included non-smoking, ex-smoking, and current smoking. We compared the participants' answers on the smoking status in the latest survey before the diagnosis of diabetes with those in the first survey conducted after the diagnosis; the study subjects were divided into four groups based on the changes in their smoking status—current smoker, short-term quitter, long-term quitter, and never smoker. The study participants were classified as current smokers if they answered current smoking after diagnosis regardless of smoking status before diagnosis ( $n=3857$ ); short-term quitters if they answered: (1) current smoking before diagnosis and non-smoking after diagnosis ( $n=942$ ), (2) current smoking before diagnosis and ex-smoking after diagnosis ( $n=489$ ), or (3) non-smoking before diagnosis and ex-smoking after diagnosis ( $n=768$ ); long-term quitters if they answered: (1) ex-smoking both before and after diagnosis ( $n=859$ ) or (2) ex-smoking before diagnosis and non-smoking after diagnosis ( $n=1037$ ); and never smokers if they answered non-smoking both before and after diagnosis ( $n=4673$ ). The surveyed date of smoking status after the diagnosis was defined as index date (start date of follow-up) in our study.

The potential confounding factors considered in analyses available for adjustment were age, residential area, household income, BMI, systolic and diastolic blood pressures (BP), fasting blood glucose level, total cholesterol level, family history of diabetes, heavy drinking, exercise, and comorbidities. All potential confounding factors, except comorbidities, were measured at the index date.

Household income was classified as low (<40th percentile), middle (41st–80th percentiles), or high (81st–100th percentiles). Residential area was classified as metropolitan (capital), urban (local government where >1 million individuals live), or rural (other). The WHO recommendations for Asian populations were used to categorize the individuals into five BMI groups: <18.5 kg/m<sup>2</sup> (underweight), 18.5–22.9 kg/m<sup>2</sup> (normal), 23.0–24.9 kg/m<sup>2</sup> (overweight), 25.0–29.9 kg/m<sup>2</sup> (class I obese), or ≥30 kg/m<sup>2</sup> (class II obese).<sup>18</sup> Individuals who consumed ≥30 g/day of alcohol were defined as heavy drinkers,<sup>19</sup> those who drank alcohol but not heavily were defined as non-heavy drinkers, and those who did not drink alcohol were defined as non-drinkers. Exercise was defined as performance of exercise at least once a week. Systolic and diastolic BPs were measured with subjects seated and after at least 5 min of rest. Blood samples were obtained after overnight fasting to measure the serum glucose, total cholesterol, and creatinine levels.

The comorbidities consisted of hypertension (ICD-10: I10–I15), renal failure (ICD-10: N17–N19), stroke (ICD-10: I60–I63), ischemic heart disease (ICD-10: I20–I25), and cancer (ICD-10: C00–C99) and were assessed by screening information for physician's diagnoses of study subjects before index date.

### Statistical analyses

The clinical and demographic characteristics of the study participants were compared based on the change in their smoking status using analysis of variance for continuous variables and Pearson's  $\chi^2$  test for categorical variables. Data were presented as mean±SD for continuous variables and as numbers (percentages) for categorical variables. For each participant, mortality was measured from the index date to 31 December 2013. The number of person-years of follow-up was counted and age-standardized mortality rates were estimated from changes in smoking status (online supplementary table 2).

Cox proportional hazards regression models were used to evaluate the association between smoking cessation and mortality, and adjusted HR (AHR) and 95% CI were calculated using the potential confounding factors described in table 1. The functional form of continuous variables (age, systolic BP, diastolic BP, fasting glucose level, and total cholesterol level) was assessed and the models were stratified by non-proportional covariates (systolic BP, diastolic BP, and total cholesterol level) (online supplementary figure 1). First, we analyzed the effect of smoking cessation after new-onset type 2 diabetes on all-cause mortality. Second, we identified the association between smoking cessation and mortality from cancer and CVD. Finally, we examined the relationship between smoking cessation and mortality stratified by BMI and exercise.

All data extraction and statistical analyses were performed using Statistical Analysis System (SAS) V.9.4 (SAS Institute). Proportional hazards assumptions were evaluated statistically and satisfied for all models.

### RESULTS

Our study enrolled 13 377 individuals aged ≥40 years with incident type 2 diabetes. We identified 1014 events of all-cause mortality (cancer,  $n=406$  and CVD,  $n=184$ ) during an average follow-up duration of 7.2±1.4 years. Table 1 presents the general characteristics of study subjects based on changes in the smoking status. The proportions of subjects with obesity, high household income, and comorbidities were higher among short-term quitters than among current smokers. In contrast, the proportions of subjects living in urban residential areas, with a family history of diabetes, who drank heavily, and who exercised were lower among the short-term quitters than among current smokers.

Figure 2 presents the AHRs and 95% CIs for the risk of overall and cause-specific mortality based on changes in smoking status (online supplementary table 2). After adjustment for all confounding factors, the reduced risk of all-cause mortality was more significant among short-term quitters (AHR 0.78; 95% CI 0.64 to 0.95), long-term quitters (AHR 0.68; 95% CI 0.54 to 0.85), and never smokers (AHR 0.66; 95% CI 0.56 to 0.78) compared with current smokers ( $p$  for trend <0.001). The lower risk of mortality from cancer was significant among the



**Table 1** General characteristics of study subjects according to change of smoking status

Variables	Total	Change of smoking status								P value
		Current smokers		Short-term quitters		Long-term quitters		Never smokers		
		n	%	n	%	n	%	n	%	
Total	13377	4609	34.5	2199	16.4	1896	14.2	4673	34.9	
Age (years)	56.4±9.1	54.4	8.5	57.0	9.0	56.6	9.3	58.1	9.3	<0.001
BMI (kg/m <sup>2</sup> )										<0.001
≤18.5	244	130	2.8	24	1.1	24	1.3	66	1.4	
18.5–23	3842	1523	33.0	588	26.7	464	24.5	1267	27.1	
23–25	3781	1263	27.4	611	27.8	558	29.4	1349	28.9	
25–30	5085	1548	33.6	906	41.2	783	41.3	1848	39.5	
≥30	425	145	3.1	70	3.2	67	3.5	143	3.1	
BP (mm Hg)										
Systolic	130.1±16.1	129.1	16.0	130.0	16.1	130.4	15.3	131.0	16.5	<0.001
Diastolic	81.2±10.5	80.8	10.5	81.0	10.6	81.5	10.2	81.4	10.6	0.016
Fasting glucose (mg/dL)	111.0±33.6	111.2	35.3	111.7	38.1	110.7	29.4	110.6	31.2	0.544
Total cholesterol (mg/dL)	196.3±37.5	197.4	37.6	197.2	38.3	197.0	36.4	194.6	37.5	0.001
Family history of diabetes	1014	372	8.1	158	7.2	168	8.9	316	6.8	0.014
Heavy drinking	1121	588	12.8	164	7.5	136	7.2	233	5.0	<0.001
Exercise	7547	2574	55.8	1157	52.6	1198	63.2	2618	56.0	<0.001
Household income										<0.001
Low	3598	1354	29.4	572	26.0	399	21.0	1273	27.2	
Middle	5173	1883	40.9	856	38.9	699	36.9	1735	37.1	
High	4606	1372	29.8	771	35.1	798	42.1	1665	35.6	
Residential area										<0.001
Metropolitan	2068	619	13.4	362	16.5	320	16.9	767	16.4	
Urban	3963	1481	32.1	596	27.1	541	28.5	1345	28.8	
Rural	7346	2509	54.4	1241	56.4	1035	54.6	2561	54.8	
Comorbidities										
Hypertension	6032	1720	37.3	1038	47.2	915	48.3	2359	50.5	<0.001
Renal failure	198	46	1.0	40	1.8	32	1.7	80	1.7	0.010
Stroke	636	158	3.4	104	4.7	107	5.6	267	5.7	<0.001
Ischemic heart disease	2019	561	12.2	352	16.0	335	17.7	771	16.5	<0.001
Cancer	1060	284	6.2	200	9.1	162	8.5	414	8.9	<0.001

Values are presented as mean±SD or n (%).

BMI, body mass index; BP, blood pressure.

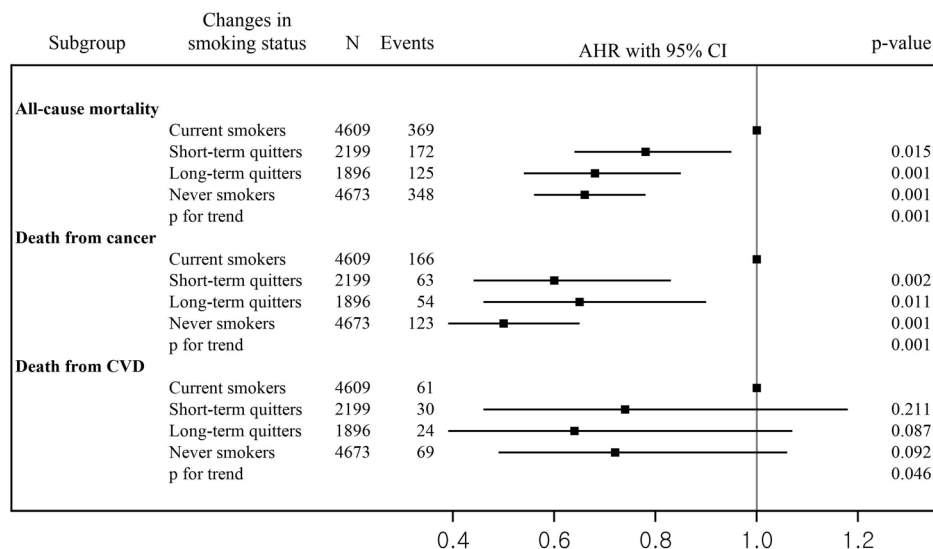
short-term quitters (AHR 0.60; 95% CI 0.44 to 0.83), long-term quitters (AHR 0.67; 95% CI 0.46 to 0.90), and never smokers (AHR 0.50; 95% CI 0.39 to 0.65) compared with current smokers (p for trend <0.001). There was no significant association between changes in smoking status and death from CVD.

Figure 3 shows the AHRs and 95% CIs for the risk of all-cause mortality for individuals with different smoking behaviors stratified by BMI and exercise (online supplementary table 3). In the non-obese (individuals with BMI <25 kg/m<sup>2</sup>) and exerciser groups, reduced risk of mortality was significant among short-term quitters (AHR 0.73, 0.54; 95% CI 0.58 to 0.92, 95% CI 0.38 to 0.76, respectively),

long-term quitters (AHR 0.67, 0.58; 95% CI 0.52 to 0.87, 95% CI 0.42 to 0.80, respectively), and never smokers (AHR 0.64, 0.58; 95% CI 0.53 to 0.78, 95% CI 0.45 to 0.75, respectively) compared with current smokers. Lower risk of mortality was observed among long-term quitters in obese group (individuals with BMI >25 kg/m<sup>2</sup>) (AHR 0.61; 95% CI 0.40 to 0.93) and never smokers in the obese (AHR 0.61; 95% CI 0.44 to 0.84) and exerciser groups (AHR 0.72; 95% CI 0.58 to 0.90) compared with current smokers.

## DISCUSSION

This study had three main findings. First, smoking cessation after new-onset type 2 diabetes was associated with

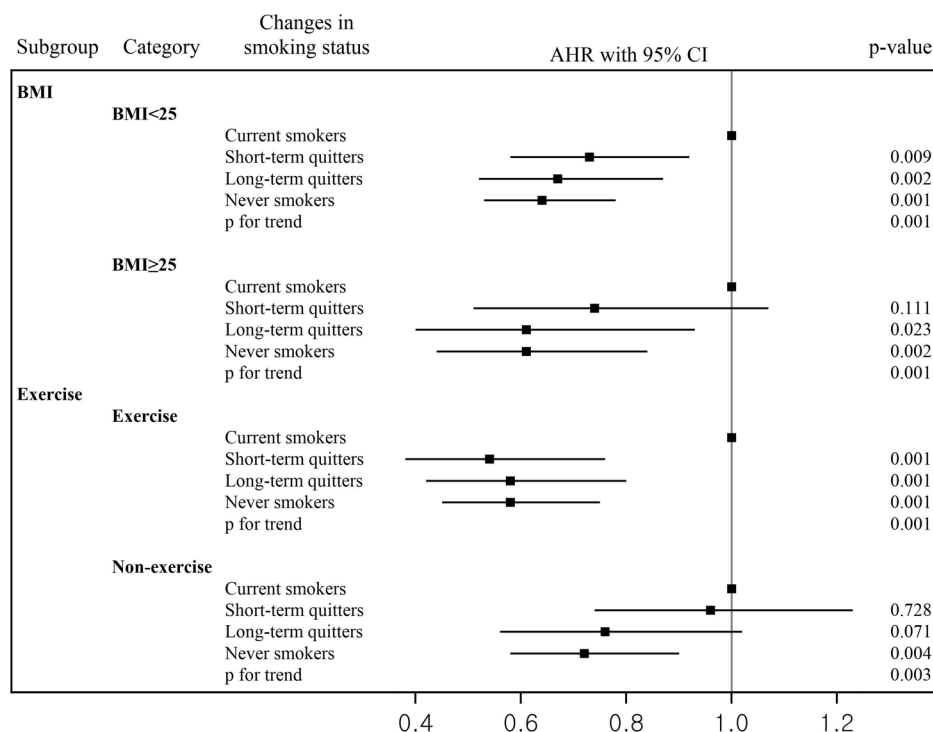


**Figure 2** Risk of overall and cause-specific mortality based on change of smoking status. AHR, adjusted HR; CVD, cardiovascular disease.

reduced risk of all-cause mortality compared with current smoking. Second, smoking cessation after new-onset type 2 diabetes was significantly associated with a lower risk of mortality from cancer compared with current smoking. Third, smoking cessation after new-onset type 2 diabetes in the non-obese and exerciser groups was associated with a lower risk of mortality compared with current smoking.

The findings of previous studies regarding the effect of smoking status on mortality have been unclear.<sup>3 8 9</sup> In a study by Chaturvedi *et al*, the all-cause mortality risks were higher for quitters than for never smokers.<sup>8</sup> In the

study by Al-Delaimy *et al*, women with type 2 diabetes who had stopped smoking for  $\geq 10$  years had lower mortality risk than never smokers<sup>3</sup>; however, they used the never smoking group as a reference group and it is difficult to identify the benefits of smoking cessation over current smoking. Cho *et al* investigated the association between smoking cessation by BMI changes and mortality and used non-reducers who did not reduce their smoking amount among current smokers as a reference group.<sup>9</sup> However, they did not observe any benefits of smoking cessation on mortality. Our study suggests benefits of



**Figure 3** Change of smoking status and risk of mortality as stratified by BMI and exercise. AHR, adjusted HR; BMI, body mass index.

smoking cessation on mortality. Smoking cessation is particularly important for patients with type 2 diabetes because their risk of developing other morbidities is substantially augmented by smoking and insulin resistance.<sup>20</sup> In our study, smoking cessation after the diagnosis of type 2 diabetes was significantly associated with a reduced risk of all-cause mortality compared with current smoking. This indicates that quitting smoking may have health benefits after the diagnosis of type 2 diabetes.

We found that smoking cessation after new-onset type 2 diabetes is significantly associated with a lower risk of mortality from cancer compared with current smoking, which is consistent with previous reports. In a study by Ohnishi *et al*,<sup>21</sup> current smokers with type 2 diabetes had a higher risk of cancer mortality.<sup>21</sup> Type 2 diabetes in itself is associated with cancer mortality.<sup>22–23</sup> Hyperinsulinemia accompanied by insulin resistance, chronic inflammation, and hyperglycemia are known mechanisms of oncogenesis. Another reason for the association of type 2 diabetes with cancer is that patients with type 2 diabetes are likely to have common cancer risk factors, such as smoking, obesity, and alcohol drinking. Cigarette smoking is a strong risk factor for various types of cancer,<sup>24</sup> and therefore, smoking cessation is encouraged among patients with type 2 diabetes.

One of the main findings of this study is that smoking cessation after new-onset type 2 diabetes in non-obese and exerciser groups was associated with a reduced risk of mortality compared with current smoking. However, in the obese and non-exerciser groups, there were no associations between short-term smoking cessation after diagnosis of type 2 diabetes and mortality. Obesity or physical inactivity appears to counteract the survival benefits of smoking cessation.<sup>25–26</sup> Hence, the evidence suggests that the benefits of smoking cessation may only be valid for relatively healthier patients with type 2 diabetes.

This study had several limitations. First, the smoking status was assessed on the basis of patients' self-reported information without biochemical verification, which led to underestimation or overestimation of smoking cessation. We also could not determine the exact time of smoking cessation in the study subjects because of limited data availability. Further research is warranted to explore this association using data on the exact time of smoking cessation and biomarker test findings, such as urine cotinine levels. Second, although we attempted to adjust for diverse confounding variables using multivariate analyses, the possibility of residual confounding factors cannot be completely excluded. Third, the participation level in Korean national health screening was approximately 60% in 2007, and therefore, there may have been possible selection bias. Fourth, there may be possibilities for misdiagnosis of type 2 diabetes. Although type 2 diabetes can be diagnosed using HbA1c or oral glucose tolerance test in addition to the fasting blood glucose test, the information for the former two was not included in NHIS-HEALS data. The fasting blood glucose test results were based on a single measurement; however, the test

usually needs to be repeated on a second day to diagnose diabetes. Furthermore, patients with type 3 diabetes may have been included as study subjects; we could not exclude them. Finally, our study included only a Korean population, and thus, the findings cannot be generalized to other ethnicities.

The strengths of our study include its longitudinal design and availability of abundant demographic, lifestyle variable, comorbidity, and biomedical data. To our knowledge, this is the first study to examine the impact of smoking cessation after new-onset type 2 diabetes on the risk of mortality.

In conclusion, this cohort study of a Korean population demonstrated that smoking cessation after new-onset type 2 diabetes was associated with reduced risk of all-cause mortality. Although smoking cessation seems to be more effective before the diagnosis of diabetes, quitting smoking after the diagnosis of diabetes has health benefits. We suggest that clinicians should encourage smokers with type 2 diabetes to quit smoking.

**Acknowledgements** We thank Editage ([www.editage.co.kr](http://www.editage.co.kr)) for English language editing.

**Contributors** JWC, EH and THK designed the study. JWC and EH performed the literature review and interpretation for data analysis. JWC analyzed the data. JWC, EH and THK wrote the draft. All authors read and approved the final manuscript.

**Funding** This work was supported by the National Research Foundation of Korea (grant number: 2019R1A2C1003259), the Yonsei University Research Fund (Post Doc. Researcher Supporting Program) of 2019 (grant number: 2019-12-0129), and the National Research Foundation of Korea (grant number: 2020R111A1A01053104).

**Competing interests** None declared.

**Patient consent for publication** Not required.

**Ethics approval** The Yonsei University Institutional Review Board approved this study (approval number: 7001988-202004-HR-818-02E) and the requirement for informed consent was waived as the NHIS-HEALS database was constructed after anonymization according to strict confidentiality guidelines.

**Provenance and peer review** Not commissioned; externally peer reviewed.

**Data availability statement** Data may be obtained from a third party and are not publicly available.

**Open access** This is an open access article distributed in accordance with the Creative Commons Attribution Non Commercial (CC BY-NC 4.0) license, which permits others to distribute, remix, adapt, build upon this work non-commercially, and license their derivative works on different terms, provided the original work is properly cited, appropriate credit is given, any changes made indicated, and the use is non-commercial. See: <http://creativecommons.org/licenses/by-nc/4.0/>.

#### ORCID iDs

Euna Han <http://orcid.org/0000-0003-2656-7059>

Tae Hyun Kim <http://orcid.org/0000-0003-1053-8958>

#### REFERENCES

- 1 Yang JJ, Yu D, Wen W, *et al*. Association of diabetes with all-cause and cause-specific mortality in Asia: a pooled analysis of more than 1 million participants. *JAMA Netw Open* 2019;2:e192696.
- 2 Fielding JE. Smoking: health effects and control (1). *N Engl J Med* 1985;313:491–8.
- 3 Al-Delaimy WK, Willett WC, Manson JE, *et al*. Smoking and mortality among women with type 2 diabetes: the nurses' health study cohort. *Diabetes Care* 2001;24:2043–8.
- 4 Qin R, Chen T, Lou Q, *et al*. Excess risk of mortality and cardiovascular events associated with smoking among patients with diabetes: meta-analysis of observational prospective studies. *Int J Cardiol* 2013;167:342–50.

- 5 Pan A, Wang Y, Talaei M, *et al.* Relation of smoking with total mortality and cardiovascular events among patients with diabetes mellitus: a meta-analysis and systematic review. *Circulation* 2015;132:1795–804.
- 6 Lightwood JM, Glantz SA. Short-Term economic and health benefits of smoking cessation: myocardial infarction and stroke. *Circulation* 1997;96:1089–96.
- 7 Scanlon PD, Connett JE, Waller LA, *et al.* Smoking cessation and lung function in mild-to-moderate chronic obstructive pulmonary disease. the lung health study. *Am J Respir Crit Care Med* 2000;161:381–90.
- 8 Chaturvedi N, Stevens L, Fuller JH. Which features of smoking determine mortality risk in former cigarette smokers with diabetes? *Diabetes Care* 1997;20:1266–72.
- 9 Cho MH, Lee K, Park SM, *et al.* Effects of smoking habit change on all-cause mortality and cardiovascular diseases among patients with newly diagnosed diabetes in Korea. *Sci Rep* 2018;8:5316.
- 10 American Diabetes Association. Standards of medical care in diabetes-2015 abridged for primary care providers. *Clin Diabetes* 2015;33:97–111.
- 11 Resnick HE, Foster GL, Bardsley J, *et al.* Achievement of American diabetes association clinical practice recommendations among U.S. adults with diabetes, 1999–2002: the National health and nutrition examination survey. *Diabetes Care* 2006;29:531–7.
- 12 Tonstad S. Cigarette smoking, smoking cessation, and diabetes. *Diabetes Res Clin Pract* 2009;85:4–13.
- 13 Wang XJ, Jiang CQ, Zhang WS, *et al.* Milk consumption and risk of mortality from all-cause, cardiovascular disease and cancer in older people. *Clin Nutr* 2020. doi:10.1016/j.clnu.2020.03.003
- 14 Batty GD, Kivimaki M, Gray L, *et al.* Cigarette smoking and site-specific cancer mortality: testing uncertain associations using extended follow-up of the original Whitehall study. *Ann Oncol* 2008;19:996–1002.
- 15 Ezzati M, Henley SJ, Thun MJ, *et al.* Role of smoking in global and regional cardiovascular mortality. *Circulation* 2005;112:489–97.
- 16 Seong SC, Kim Y-Y, Park SK, *et al.* Cohort profile: the National health insurance Service-National health screening cohort (NHIS-HEALS) in Korea. *BMJ Open* 2017;7:e016640.
- 17 Liu Y, Shu X-O, Wen W, *et al.* Association of leisure-time physical activity with total and cause-specific mortality: a pooled analysis of nearly a half million adults in the Asia cohort Consortium. *Int J Epidemiol* 2018;47:771–9.
- 18 WHO Expert Consultation. Appropriate body-mass index for Asian populations and its implications for policy and intervention strategies. *Lancet* 2004;363:157–63.
- 19 Agarwal DP. Cardioprotective effects of light-moderate consumption of alcohol: a review of putative mechanisms. *Alcohol Alcohol* 2002;37:409–15.
- 20 Al-Delaimy WK, Manson JE, Solomon CG, *et al.* Smoking and risk of coronary heart disease among women with type 2 diabetes mellitus. *Arch Intern Med* 2002;162:273–9.
- 21 Ohnishi H, Saitoh S, Akasaka H, *et al.* Combination of type 2 diabetes and smoking increases total cancer mortality in Japanese men using competing risk analysis: the Tanno-Sobetsu study. *Diabetol Int* 2016;7:167–72.
- 22 Sasazuki S, Charvat H, Hara A, *et al.* Research Group for the D, evaluation of cancer prevention strategies in J. diabetes mellitus and cancer risk: pooled analysis of eight cohort studies in Japan. *Cancer Sci* 2013;104:1499–507.
- 23 Noto H, Tsujimoto T, Sasazuki T, *et al.* Significantly increased risk of cancer in patients with diabetes mellitus: a systematic review and meta-analysis. *Endocr Pract* 2011;17:616–28.
- 24 IARC Working Group on the Evaluation of Carcinogenic Risks to Humans. Tobacco smoke and involuntary smoking. *IARC Monogr Eval Carcinog Risks Hum* 2004;83:1–1438.
- 25 Shaw BA, Agahi N. Smoking and physical inactivity patterns during midlife as predictors of all-cause mortality and disability: a 39-year prospective study. *Eur J Ageing* 2014;11:195–204.
- 26 Luijckx E, Lohse T, Faeh D, *et al.* Joint effects of BMI and smoking on mortality of all-causes, CVD, and cancer. *Cancer Causes Control* 2019;30:549–57.