


Insulin treatment in patients with diabetes mellitus and heart failure in the era of new antidiabetic medications

Lidia Staszewsky ¹, Marta Baviera,² Mauro Tettamanti,³ Pierluca Colacioppo,² Fabio Robusto,⁴ Antonio D'Ettore,⁵ Vito Lepore,⁶ Ida Fortino,⁷ Lucia Bisceglia,⁵ Ettore Attolini,⁸ Elisabetta Anna Graps,⁹ Gianluca Caldo,² Maria Carla Roncaglioni,² Silvio Garattini,¹⁰ Roberto Latini¹

To cite: Staszewsky L, Baviera M, Tettamanti M, et al. Insulin treatment in patients with diabetes mellitus and heart failure in the era of new antidiabetic medications. *BMJ Open Diab Res Care* 2022;**10**:e002708. doi:10.1136/bmjdr-2021-002708

► Additional supplemental material is published online only. To view, please visit the journal online (<http://dx.doi.org/10.1136/bmjdr-2021-002708>).

Received 24 November 2021
Accepted 27 February 2022



© Author(s) (or their employer(s)) 2022. Re-use permitted under CC BY-NC. No commercial re-use. See rights and permissions. Published by BMJ.

For numbered affiliations see end of article.

Correspondence to

Dr Lidia Staszewsky;
lidia.staszewsky@marionegri.it

ABSTRACT

Background Coexistent heart failure (HF) and diabetes mellitus (DM) are associated with marked morbidity and mortality. Optimizing treatment strategies can reduce the number and severity of events. Insulin is frequently used in these patients, but its benefit/risk ratio is still not clear, particularly since new antidiabetic drugs that reduce major adverse cardiac events (MACEs) and renal failure have recently come into use. Our aim is to compare the clinical effects of insulin in a real-world setting of first-time users, with sodium-glucose cotransporter-2 inhibitor (SGLT-2i), glucagon-like peptide-1 receptor agonist (GLP-1RA) and the other antihyperglycemic agents (other-AHAs).

Methods We used the administrative databases of two Italian regions, during the years 2010–2018. Outcomes in whole and propensity-matched cohorts were examined using Cox models. A meta-analysis was also conducted combining the data from both regions.

Results We identified 34 376 individuals ≥50 years old with DM and HF; 42.0% were aged >80 years and 46.7% were women. SGLT-2i and GLP-1RA significantly reduced MACE compared with insulin and particularly death from any cause (SGLT-2i, hazard ratio (95% CI) 0.29 (0.23 to 0.36); GLP-1RA, 0.482 (0.51 to 0.42)) and first hospitalization for HF (0.57 (0.40 to 0.81) and 0.67 (0.59 to 0.76)).

Conclusions In patients with DM and HF, SGLT-2i and GLP-1RA significantly reduced MACE compared with insulin, and particularly any cause of death and first hospitalization for HF. These groups of medications had high safety profiles compared with other-AHAs and particularly with insulin. The inadequate optimization of HF and DM cotreatment in the insulin cohort is noteworthy.

INTRODUCTION

Cardiovascular (CV) disease is the main cause of mortality and morbidity in patients with diabetes mellitus (DM). The risk of heart failure (HF) is more than double compared with that in patients without DM¹ and although the determinants are not completely understood, the most important causes are hypertension, coronary artery disease and independent deleterious biochemical, functional and morphological changes of the

Significance of this study

What is already known about this subject?

► Around 30% of patients with heart failure (HF) along with diabetes mellitus (DM) are treated with insulin. Results from post hoc analyses of HF trials and epidemiological studies showed that insulin increased the risk of death and HF hospitalizations. No randomized controlled trials have been done to assess the effect of insulin on clinical outcomes, and no data are available on its effects on major acute events when compared with the new antidiabetic medications—sodium glucose cotransporter-2 inhibitors (SGLT-2i) and glucagon-like peptide-1 receptor agonist (GLP-1RA). Some SGLT-2i are associated with a risk reduction of all-cause mortality, hospitalization for HF and renal failure in patients with HF with reduced ejection fraction and DM and of the combined endpoint of CV death or hospitalization in HF with preserved ejection fraction; no data from clinical trials in HF are available about GLP-1RA.

What are the new findings?

► The analysis of this population database showed that long-term treatment with either SGLT-2i or GLP-1RA compared to insulin was associated with a significant reduction of risk of death for any cause, first hospitalization for HF and of major cardiovascular events.
► Individuals from the insulin cohort were undertreated with recommended cardiovascular medications and metformin.

How might these results change the focus of research or clinical practice?

► The use of SGLT-2i or GLP-1RA reduces major adverse cardiovascular events when compared with patients treated with insulin and also allow to reduce the insulin daily dose that further may decrease patients' clinical risk. Treatment with insulin should be carefully individualized by a multidisciplinary team which includes cardiologists and diabetologists.

myocardium.² DM and HF separately are associated with significant mortality and morbidity and their coexistence further

worsens patients' outcomes, quality of life and burden of care.^{3,4}

The optimization of treatment strategies can reduce the number and severity of events in these high-risk patients. It is well established that some classes of antidiabetic agents increase the risk of CV events,³ but this is still not defined for others.

Around 30% of patients with HF along with DM are treated with insulin^{5,6} although no randomized controlled trials have been or—could be—done to assess the effect of insulin on clinical outcomes. Therefore, no strong evidence on the effect of insulin in patients with DM and HF is available.

Recent post hoc analyses of clinical trials in patients with HF with reduced and preserved left ventricular ejection fraction found that insulin was associated with higher risk of all-cause mortality and HF hospitalization.^{5,6} Cosmi *et al*, using administrative data from an Italian region, Apulia, showed that the risk of these events was even higher in subjects from the real world.⁵

In recent years, new antidiabetic agents—glucagon-like peptide-1 receptor agonist (GLP-1RA) and sodium-glucose cotransporter-2 inhibitor (SGLT-2i)—in patients with diabetes with a high risk of CV events have increased the survival of hospital admission for HF, and renal outcomes independently of a glucose-lowering effect. GLP-1RA treatment was also associated with a significant reduction of non-fatal stroke risk,⁷ and SGLT-2i was associated with a risk reduction in all-cause mortality, hospitalization for HF and renal failure (RF) in patients with HF with reduced and preserved ejection fraction (EF) with and without DM.^{8–10} Trials with the new antidiabetic drugs also showed a tendency of a lower use of insulin in treated patients compared with controls.¹¹

The aim of our analysis was to assess the effects of insulin treatment compared with SGLT-2i, GLP-1RA and other antihyperglycemic agents (other-AHAs) on the risk of death and CV events in two Italian real-world populations with DM and HF. We also tested the safety of study treatments. The administrative databases of two regions, Lombardy and Apulia were used to verify the expected clinical benefits and risks in routine clinical settings and to check for possible North-South differences. Finally, we conducted a meta-analysis combining the data from both regions.

METHODS

Data source

Our study used linkable administrative health databases of two Italian regions, Lombardy and Apulia, which include population registries with demographic data of all residents and detailed information on out-of-hospital medical prescriptions and hospital records.¹²

Healthcare in Italy is publicly funded for all residents, irrespective of social class or employment, and everyone is assigned a personal identification number kept in the National Civil Registration System. All residents are

assisted by general practitioners and/or specialists under the National Health System (NHS). The pharmacy prescription database contains the medication name and Anatomic Therapeutic Chemical (ATC) classification code, quantity and date of dispensation of drugs reimbursed by the NHS. Data on hospitalization include date of admission, discharge, death, primary diagnosis and up to five coexisting clinical conditions and procedures received. The diagnoses, uniformly coded according to the Ninth International Code of Diseases (ICD-9-CM) and standardized in all Italian hospitals, are compiled by the hospital specialists directly in charge of the patients and are validated by hospitals against detailed clinical-instrumental data, as they determine the NHS reimbursement. A unique identification code allows linkage of all databases. To ensure privacy, each identification code was automatically converted into an anonymous code before Istituto di Ricerche Farmacologiche Mario Negri (IRFMN) received the dataset.

Study cohorts and follow-up

All subjects 50 years and older with chronic exposure to insulin and/or AHAs (at least two packages in 1 year; ATC code A10*, online supplemental annex 1) from January 1, 2010 through December 31, 2018, from the overall diabetic cohort were included in the analysis, with 44 970 subjects in Apulia and 236 944 in Lombardy. Subjects were split into four groups according to the first exposure (first-time users) as follows: GLP-1RA, SGLT-2i, insulin and other-AHAs including metformin, sulfonylureas, glinides, thiazolidinediones, acarbose and dipeptidyl peptidase-4 inhibitors. First-time users were defined as subjects first exposed to one of the AHAs, in the 5 years before entering the cohort, with no prior exposure to any medications belonging to the same class/group.

Subjects started on GLP-1RA and SGLT-2i were included in the study from 2010 and 2015, depending on the availability of these drugs in the Italian market.

Starting from the overall diabetic cohort, subjects with diabetes and a history of at least one hospitalization for HF were included in the analysis.

Comorbidities for the 5 years before the index date were collected using hospital records. Previous exposure to any AHA class, hospital admissions and Drug Derived Complexity Index (DDCI) were calculated on the previous 5 years, and information on other medications of interest was retrieved for the previous 12 months. Information on duration of diabetes was collected based on the date of the first prescription of an antidiabetic agent or DM hospitalization between years 2000 and 2018 (online supplemental annex 2).

Subjects were followed from starting the drug until the end of follow-up (December 31, 2018); reasons for censoring were migration or admission to a nursing home linked to the type of flow typical of administrative databases since in these two cases we lose the possibility to follow the subjects. The longest period of observation

was 3.5 years depending on the availability of SGLT-2i on the Italian market.

Study outcomes

Outcomes of interest were death from any cause, hospital readmission for HF or kidney failure, stroke (ischemic and hemorrhagic) and myocardial infarction. We also analyzed the results as two different composite outcomes, one defined as death and the first admission for myocardial infarction or stroke (MACE3) and the second as first myocardial infarction, stroke, HF or unstable angina (MACE4).

All clinical events were collected using hospital admission diagnoses according to the ICD-9-CM codes (online supplemental annexes 3 and 4). RF was not considered between the studied outcomes for SGLT-2i to avoid a further bias since these medications were not indicated in patients with RF between 2015 and 2018. Serious adverse events including hospital admission for hypoglycemia, ketoacidosis, diabetes with coma, limb amputation, RF, syncope and fractures, as primary diagnosis were also analyzed.

Sensitivity analyses

Three different preplanned sensitivity analyses of study outcomes were done to reduce confounding due to the imbalance in study covariates and to overcome the gap for missing clinical information: (1) propensity matched cohorts (PMCs), (2) whole cohort and PMC of subjects without a history of renal disease and (3) cumulative incidence of outcome events (Kaplan-Meier curves) in PMC with a similar calendar year of inclusion in the study and duration of follow-up, years 2015–2018 (online supplemental annex 5).

To optimize the interpretation of the results, using data from the Apulia database further analyses were done to assess:

- Changes in insulin, SGLT-2i, GLP-1RA and other-AHA prescriptions: The exposure to the antidiabetic medications was considered positive when at least one pack was prescribed and dispensed 12 months before entering the cohort study and in the following 12 months, identifying the new prescriptions in the 12 months after the index date.
- Changes in insulin daily doses in SGLT-2i and GLP-1RA cohorts: The average of the defined daily dose (DDD) of insulin was calculated in 12 months before entering the study cohort and compared with that calculated in the 12 months after the index date.
- Insulin dose adjustments over 3 years after starting SGLT-2i or GLP-1RA treatment in Apulia: Subjects who reduced, maintained or increased the mean insulin of DDD were identified. In patients from the SGLT-2i or GLP-1RA cohorts whose insulin doses were reduced, the incidence of outcome events was calcu-

lated comparing the incidence in 3 years before and after study entry.

Statistical analysis

Frequencies and proportions are presented for categorical variables, and means and SDs for continuous variables. DDCl, previous hospital admission, history of diabetes and follow-up times are expressed as median and quartile 1–quartile 3 (Q1–Q3).

Differences in baseline characteristics among the classes were tested using analysis of variance (for age) or Kruskal-Wallis test (for other numerical values) and χ^2 test for categorical values.

Time-to-first event analysis was conducted using multi-variable Cox proportional hazard models; hazard ratios (HRs) and 95% CI for each outcome were estimated, comparing the effects of GLP-1RA, SGLT-2i and other-AHAs versus insulin (outcomes were analyzed by intention to treat, that is, according to first-time drug use). Confounders were chosen if they resulted significantly in the univariate analysis and based on their clinical relevance on outcomes as: age classes (50–59, 60–64, 65–69, 70–74, 75–79, >80), sex, index year, DDCl index and anamnesis of myocardial infarction, ischemic or hemorrhagic stroke, atrial fibrillation, chronic obstructive pulmonary disease (COPD), cancer, renal disease and diabetic history.

In the main and sensitivity analyses, outcomes in studied cohorts were reported as crude incidence rates (IRs) per 100 person-years.

Estimates of the cumulative incidence for death from any cause and first hospitalization for HF are presented as unadjusted Kaplan-Meier curves for each region. The log-rank test was used to compare the survival distribution, and the HR (95% CI) for clinical events was calculated.

Pooled risks from the two regions were presented as a meta-analysis for an overall summary. I^2 was used to calculate heterogeneity between the regions. An I^2 probability $\geq 50\%$ indicated significant heterogeneity. The fixed effects model was used when there was no significant inter-region heterogeneity; otherwise, the random effects model was used. The log-rank test, stratified by region, was used for comparisons, and HRs with 95% CI for events were calculated.

In all analyses, $p < 0.05$ was considered significant. All analyses were done with SAS V.9.4 (SAS Institute, Cary, North Carolina, USA).

RESULTS

From January 1, 2010 to December 31, 2018, 144 970 DM subjects 50 years and older were identified, considered first-time users of antihyperglycemic medications such as SGLT-2i, or GLP-1RA, or insulin or other-AHAs in Apulia and 236 944 in Lombardy; HF coexisted, respectively, in 13 721 (9.5%) and 20 655 subjects (8.7%) (online supplemental figure 1). Baseline

characteristics of subjects from whole studied cohorts are presented in [table 1](#). The most frequent comorbidities in both regions were ischemic heart disease, atrial fibrillation, renal and COPD. At study entry, the median (Q1–Q3) duration of DM was 9 (6–10) years in subjects from Apulia region and 10 (7–10) years in those from Lombardy.

The proportions of subjects with DM and HF treated with SGLT-2i, GLP-1RA, insulin and other-AHAs were similar in Apulia (3.9%, 3.3%, 51.2%, 41.6%) and (3.8%, 3.7%, 53.0%, 39.5%) in Lombardy ([table 2](#)).

In both regions, subjects in the insulin and other-AHA cohorts were older and more likely to have concomitant illnesses such as cerebrovascular disease, atrial fibrillation, peripheral artery disease and cancer than the SGLT-2i and GLP-1RA cohorts. COPD was more frequent in subjects from the Apulia region in particular those from the insulin and AHAs cohorts. Renal diseases were frequent in the insulin cohort from both regions, 31.3% in Apulia and 27.1% in Lombardy.

The rates of recommended medications for HF as ACE/angiotensin II receptor agonist blockers were lower in the insulin than in the SGLT-2i and GLP-1RA cohorts in Lombardy. Beta-blockers and lipid-lowering drugs were prescribed less in the insulin and other-AHA cohorts from both regions, while digitalis was prescribed more in the insulin and other-AHAs cohorts, in particular in Lombardy ([table 2](#)).

Overall median (Q1–Q3) follow-up time was 2.5 (0.9–5.1) years in Apulia and 2.5 (0.8–5.0) years in Lombardy.

Clinical events

During follow-up, death from any cause and HF were the most frequent events with a higher IRs per 100 person-years in other-AHAs and insulin cohorts in both study regions ([figures 1 and 2](#)). A substantial significant reduction in death from any cause, first HF hospitalization and in MACE3 an MACE4 risk, was observed in both the SGLT-2i and GLP-1RA cohorts compared with insulin; a significant reduction in RF risk was also found in the GLP-1RA cohort; risk reduction was similar in both regions.

Kaplan-Meier curves for death from any cause and for first hospitalization for HF show how differences in the cumulative incidence of these events appeared soon when the SGLT-2i and GLP-1RA cohorts were compared with insulin ([figure 3A,B](#)); this was not apparent for the comparison with the other-AHAs. The benefit of treatments continued over the 3-year follow-up for the SGLT-2i cohort and 8 years for the GLP-1RA cohort.

Sensitivity analyses and meta-analysis

The three prespecified sensitivity analyses in Apulia and Lombardy of the selected outcomes confirmed the results obtained in the whole population (online supplemental tables 1A, 1B, 2 and 3 and figures 2 and 3).

Meta-analysis of the Lombardy and Apulia cohorts largely confirmed the results from the main analysis of the individual regions (online supplemental figure 4).

Frequency of insulin and other antihyperglycemic prescriptions in the 12 months before and after study entry

The frequency of subjects: (1) treated with insulin before entering the study, (2) those who started in the 12 months following the date of entry, and (3) those who continued insulin for 12 months in both regions are reported in online supplemental figure 5. The highest rate of patients with insulin prescriptions in the 12 months before study entry and in those who continued insulin for 12 months more, was found in the SGLT-2i cohort followed by the GLP-1RA cohort. The frequency of patients who started insulin treatment in the 12 months after study entry resulted much lower.

In the insulin cohort, metformin prescriptions decreased from 71% in Apulia and 65% in Lombardy region in the 12 months before entering in the study to 29.9% and 21.9%, respectively, in the 12 months after entry (online supplemental table 4A, B).

Insulin-defined daily dose and it changes in the SGLT-2i and GLP-1RA cohort

An exploratory analysis of the Apulia cohort (online supplemental methods and table 4) showed that in the 12 months before study entry the average insulin DDD was 257 ± 338 units in SGLT-2i and 160 ± 230 units in GLP-1RA. The rate of subjects who decreased (56%), maintained (9.7%) or increased (34.2%) the mean DDD (mean DDD in the 12 months before vs mean DDD in the 12 months after entry in the study) was significantly different ($p < 0.0001$) (online supplemental table 5). The reduction of insulin DDD resulted particularly significant in subjects treated with SGLT-2i ($p < 0.001$). In the 244 subjects who reduced the insulin DDD, the incidence rate ratio (95% CI) for HF and myocardial infarction showed a significant reduction at 3-year follow-up (online supplemental table 6).

Safety

The rates of adverse events were similar in both regions. The most frequent serious adverse events were fractures in all cohorts but principally in the insulin (5.5% in Apulia, 5.3% in Lombardy) and the other-AHA cohort (6.9% and 6.6%, respectively). The second more frequent was lower limb amputations ([table 3](#)). Hypoglycemia and syncope were more frequent in the insulin and other-AHAs cohorts and absent or rare with SGLT-2i and GLP-1RA.

DISCUSSION

The present study based on a large cohort of diabetic subjects with HF from two Italian regions provides the first consistent evidence that long-term treatment with either SGLT-2i or GLP-1RA compared with insulin is associated with a significant reduction of risk for death from

Table 1 Baseline characteristics of subjects with diabetes and heart failure according to study regions and antihyperglycemic therapy (first-time users from 2010 to 2018)

Variables	Apulia					Lombardy						
	SGLT-2i (531)	GLP-1RA (459)	Insulin (7027)	Other AHAs (5704)	Total (13 721)	P-value	SGLT-2i (786)	GLP-1RA (759)	Insulin (10 950)	Other AHAs (8160)	Total (20 655)	P-value*
Age (years), mean±SD§	68.8±7.9	67.7±8.4	78.4±8.7	76.8±8.9	77.0±9.1	<0.0001	70.4±8.1	69.5±8.4	79.0±8.5	78.6±8.7	78.2±8.9	<0.0001
Age groups (years), n (%)†												
50–59	75 (14.1)	81 (17.7)	216 (3.1)	220 (3.9)	592 (4.3)	<0.0001	80 (10.2)	99 (13.0)	251 (2.3)	228 (2.8)	658 (3.2)	<0.0001
60–64	82 (15.4)	86 (18.77)	316 (4.5)	355 (6.2)	839 (6.1)		95 (12.091)	126 (16.6)	445 (4.1)	359 (4.4)	1025 (5.0)	
65–69	133 (25.1)	103 (22.4)	575 (8.2)	620 (10.9)	1431 (10.4)		165 (21.0)	146 (19.2)	861 (7.9)	629 (7.7)	1801 (8.7)	
70–74	107 (20.2)	90 (19.6)	935 (13.3)	898 (15.7)	2030 (14.8)		193 (24.6)	160 (21.1)	1423 (13.00)	1156 (14.2)	2932 (14.2)	
75–79	81 (15.3)	60 (17.0)	1487 (21.2)	1210 (21.2)	2838 (20.7)		151 (19.2)	129 (17.0)	2261 (20.7)	1669 (20.5)	4210 (20.4)	
80+	53 (10.0)	39 (8.5)	3498 (49.8)	2401 (42.1)	5991 (43.7)		102 (13.0)	99 (13.0)	5709 (52.1)	4419 (50.5)	10 209 (48.6)	<0.0001
Female, n (%)†	209 (39.36)	201 (43.79)	3515 (50.02)	2942 (51.58)	6867 (50.05)	<0.0001						
Comorbidities, n (%)†												
Cerebrovascular disease	107 (20.15)	68 (14.81)	1634 (23.3)	1409 (24.7)	3218 (23.45)	<0.0001	91 (11.6)	80 (10.5)	1939 (17.7)	1403 (17.2)	3513 (17.1)	<0.0001
Stroke (all)	22 (4.14)	14 (3.05)	355 (5.1)	260 (4.6)	651 (4.7)	0.1545	23 (2.93)	20 (2.64)	470 (4.29)	317 (3.88)	830 (4.0)	0.0335
Ischemic heart disease												
Myocardial infarction	153 (28.1)	106 (23.1)	1637 (23.3)	1193 (20.9)	3089 (22.5)	<0.0001	208 (26.4)	155 (20.4)	2695 (24.6)	1916 (23.5)	4974 (24.1)	0.0335
Other coronary disease	276 (52.0)	195 (42.5)	2896 (41.2)	2468 (43.3)	5835 (42.5)	<0.0001	383 (48.7)	340 (44.8)	4247 (38.8)	3213 (39.4)	8183 (39.6)	<0.0001
Atrial fibrillation	122 (23.0)	127 (27.7)	2795 (39.8)	2036 (35.7)	5080 (37.0)	<0.0001	216 (27.5)	232 (30.6)	4226 (38.6)	3214 (39.4)	7888 (38.2)	<0.0001
Peripheral vascular disease	96 (18.1)	114 (24.8)	1271 (18.1)	1072 (18.8)	2553 (18.6)	0.0041	106 (13.5)	95 (12.5)	1543 (14.1)	961 (11.8)	2705 (13.1)	<0.0001
Lower limb complication	12 (2.3)	23 (5.0)	140 (2.0)	122 (2.1)	297 (2.2)	0.0003	28 (3.6)	27 (3.5)	428 (3.9)	263 (3.2)	746 (3.6)	0.0968
Pulmonary embolism	3 (0.6)	4 (0.9)	50 (0.7)	37 (0.7)	94 (0.7)	0.9122	3 (0.4)	7 (0.9)	189 (1.7)	132 (1.6)	331 (1.6)	0.0133
Renal disease	71 (13.4)	99 (21.6)	2201 (31.3)	1370 (24.0)	3741 (27.3)	<0.0001	61 (7.8)	118 (15.5)	2968 (27.1)	1727 (21.1)	4874 (23.6)	<0.0001
Neuropathy	26 (4.9)	25 (5.5)	189 (2.7)	242 (4.2)	482 (3.5)	<0.0001	39 (4.9)	34 (4.5)	320 (2.9)	307 (3.8)	700 (3.4)	0.0002
Diabetic retinopathy	1 (0.19)	0 (0.0)	20 (0.28)	34 (0.6)	54 (0.4)	0.0164	5 (0.6)	1 (0.1)	29 (0.3)	24 (0.3)	59 (0.3)	0.2399
COPD	137 (25.8)	140 (30.5)	2817 (40.1)	2290 (40.2)	5384 (39.2)	<0.0001	144 (18.3)	185 (24.3)	2293 (20.9)	1749 (21.4)	4371 (21.2)	0.0273
Cancer	57 (10.7)	50 (10.9)	1294 (18.4)	922 (16.2)	2323 (16.9)	<0.0001	71 (9.0)	81 (10.7)	1832 (16.7)	1317 (16.1)	3301 (16.0)	<0.0001
Cardiovascular interventions, n (%)†												
Percutaneous coronary intervention/ coronary artery by-pass/other revascularizations	45 (8.5)	47 (10.2)	721 (10.3)	624 (10.9)	1437 (10.5)	0.2667	98 (12.5)	122 (16.1)	1425 (13.0)	1133 (13.9)	2778 (13.4)	0.0410

Continued

Table 1 Continued

Variables	Apulia			Lombardy							P-value*	
	SGLT-2i (531)	GLP-1RA (459)	Insulin (7027)	Other AHAs (5704)	Total (13 721)	P-value	SGLT-2i (786)	GLP-1RA (759)	Insulin (10 950)	Other AHAs (8160)		Total (20 655)
Valve replacement /annuloplasty /valvuloplasty	15 (2.8)	15 (3.3)	252 (3.6)	173 (3.0)	455 (3.32)	0.3302	56 (7.2)	42 (5.6)	542 (4.9)	466 (5.6)	1106 (5.3)	0.0148
Device therapy, n (%)†												
Ventricular assist device	1 (0.2)	2 (0.4)	7 (0.1)	1 (0.02)	11 (0.1)	0.0110	0 (0.0)	1 (0.1)	5 (0.1)	2 (0.0)	8 (0.0)	0.4660
Implantable cardioverter/defibrillator	69 (13.0)	46 (10.0)	641 (9.1)	508 (8.9)	1264 (9.2)	0.0173	60 (7.6)	74 (9.7)	646 (5.9)	472 (5.8)	1252 (6.1)	<0.0001
Cardiac resynchronization therapy	20 (3.8)	17 (3.7)	149 (2.1)	112 (2.0)	298 (2.2)	0.0054	68 (8.6)	33 (4.3)	438 (4.0)	273 (3.3)	812 (3.9)	<0.0001
Pacemaker implantation	32 (6.0)	25 (5.5)	546 (7.8)	481 (8.4)	1084 (7.9)	0.0329	42 (5.3)	47 (6.2)	990 (9.0)	844 (9.0)	1923 (9.3)	<0.0001
DDCI Index‡, median (Q1–Q3)	8 (7–10)	9 (7–10)	9 (7–10)	9 (7–10)	9 (7–10)	<0.0001	8 (7–10)	8 (7–10)	8 (7–10)	8 (6–10)	8 (7–10)	<0.0001
No. of hospital admissions‡, median (Q1–Q3)	3 (2–5)	4 (2–6)	4 (2–6)	4 (2–7)	4 (2–6)	<0.0001	3 (2–5)	4 (2–6)	4 (2–6)	4 (2–6)	4 (2–6)	0.1567
History of diabetes, n (%)†												
0–4 years	3 (0.6)	31 (6.8)	907 (12.9)	1368 (24.0)	2309 (16.8)	<0.0001	2 (0.2)	63 (8.3)	1058 (9.6)	1969 (24.1)	3092 (15.0)	<0.0001
5–9 years	101 (19.0)	144 (31.4)	2831 (40.3)	2438 (42.7)	5514 (40.2)		130 (16.5)	188 (24.7)	2599 (23.7)	1984 (24.3)	4901 (23.7)	
10+years	427 (80.4)	284 (61.9)	3289 (46.8)	1898 (33.3)	5898 (43.0)		654 (83.3)	508 (67.0)	7293 (66.7)	4207 (51.6)	12 662 (61.3)	
Median (Q1–Q3)‡	10 (10–10)	10 (8–10)	9 (7–10)	8(5–10)	9 (6–10)		10 (10–10)	10 (8–10)	10 (8–10)	10 (5–10)	10 (7–10)	

Stroke (all), haemorrhagic and ischemic stroke.

*P value for the comparison between study cohorts.

† χ^2 test for categorical variables.

‡Kruskal-Wallis test for other numerical variables.

§ANOVA was applied for age.

AHA, antihyperglycemic agent; ANOVA, analysis of variance; COPD, chronic obstructive pulmonary disease; DDCI, Drug Derived Complexity Index; GLP-1RA, glucagon-like peptide-1 receptor agonist; Q1–Q3, Quartile 1–Quartile 3; SGLT-2i, sodium-glucose cotransporter-2 inhibitor.

Table 2 Concomitant treatments at study entry according to study regions and antihyperglycemic therapy (first-time users from 2010 to 2018)

Variables	Apulia				Lombardy							
	SGLT-2i (531)	GLP-1RA (459)	Insulin (7027)	Other AHAs (5704)	Total (13 721)	SGLT-2i (786)	GLP-1RA (759)	Insulin (10 950)	Other AHAs (8160)	Total (20 655)		
	n (%)	n (%)	n (%)	n (%)	n (%)	n (%)	n (%)	n (%)	n (%)	n (%)		
Antihyperglycemic drugs (in the previous 5 years)												
GLP-1RA	5 (0.9)	0 (0.0)	16 (0.2)	22 (0.4)	43 (0.3)	11 (1.4)	0 (0.0)	32 (0.3)	17 (0.2)	60 (0.3)		
SGLT-2i	0 (0.0)	0 (0.0)	0 (0.00)	0 (0.0)	0 (0.0)	0 (0.0)	0 (0.0)	0 (0.0)	0 (0.0)	0 (0.0)		
Other AHAs	506 (95.3)	446 (97.2)	6846 (97.4)	4588 (80.4)	12 386 (90.3)	732 (93.1)	738 (97.2)	10 651 (97.3)	6387 (78.3)	18 508 (89.6)		
Insulin	364 (68.6)	250 (54.5)	0 (0.00)	1912 (33.5)	2526 (18.4)	547 (69.6)	396 (52.2)	0 (0.0)	1767 (21.6)	2710 (13.1)		
Metformin	483 (90.1)	430 (93.7)	6016 (85.6)	3741 (65.6)	10 670 (77.8)	688 (87.5)	692 (91.2)	9033 (82.5)	4703 (57.6)	15 116 (73.2)		
Sulfonylureas	199 (37.5)	207 (45.1)	4621 (65.9)	2732 (47.9)	7759 (56.6)	425 (54.1)	486 (64.0)	8263 (75.4)	4068 (49.8)	13 242 (64.1)		
Glinides	186 (35.0)	186 (40.5)	3171 (45.1)	671 (11.8)	4214 (30.7)	124 (15.8)	179 (23.6)	4044 (36.9)	623 (7.6)	4970 (24.1)		
Glitazones	77 (14.5)	118 (25.7)	951 (13.5)	379 (6.6)	1525 (11.1)	125 (15.9)	196 (25.8)	1247 (11.4)	274 (3.4)	1842 (8.9)		
Acarbose	57 (10.7)	37 (8.06)	517 (7.4)	2 (0.04)	613 (4.5)	72 (9.2)	85 (11.2)	934 (8.5)	5 (0.1)	1096 (5.3)		
DDP4 inhibitors	179 (33.7)	154 (33.6)	991 (14.4)	17 (0.3)	1341 (9.8)	213 (27.1)	234 (30.8)	1811 (16.5)	22 (0.3)	2280 (11.0)		
None	0 (0.0)	0 (0.0)	181 (2.6)	724 (12.7)	905 (6.6)	7 (0.9)	2 (0.2)	299 (2.7)	1303 (16.0)	1611 (7.8)		
Other medications of interest (in the previous 12 months)												
ACE-I/ARBs	435 (81.9)	390 (85.0)	5658 (80.5)	4768 (83.6)	11 251 (82.0)	669 (85.1)	645 (85.0)	8732 (79.7)	6476 (79.3)	16 522 (80.0)		
Sacubitril/valsartan	0 (0.0)	0 (0.00)	0 (0.00)	0 (0.00)	0 (0.00)	13 (1.6)	5 (0.6)	13 (0.1)	8 (0.1)	39 (0.2)		
Beta-blockers	412 (77.6)	319 (69.5)	4028 (57.3)	3200 (56.1)	7959 (58.0)	639 (81.3)	581 (76.6)	7318 (66.8)	5154 (63.1)	13 692 (66.3)		
Diuretics	390 (73.5)	368 (80.2)	5770 (82.1)	4576 (80.2)	11 104 (80.9)	644 (81.9)	654 (86.2)	8976 (82.0)	6723 (82.4)	16 997 (82.3)		
Mineralocorticoid receptor antagonists	197 (37.1)	163 (35.5)	2646 (37.7)	1842 (32.3)	4848 (35.3)	299 (38.0)	287 (37.8)	3647 (33.3)	2676 (32.8)	6909 (33.4)		
Antiarrhythmics	66 (12.4)	63 (13.7)	1276 (18.2)	945 (16.6)	2350 (17.1)	108 (13.7)	120 (15.8)	1886 (17.2)	1464 (17.9)	3578 (17.3)		
Digitalis	51 (9.6)	41 (8.9)	1552 (22.1)	1303 (22.8)	1947 (14.2)	61 (7.7)	57 (7.5)	1454 (13.3)	1305 (16.0)	2877 (13.9)		
Calcium antagonists	140 (26.4)	128 (27.9)	2335 (33.2)	1909 (33.5)	4512 (32.9)	271 (34.5)	281 (37.0)	4305 (39.3)	3032 (37.1)	7889 (38.2)		
Nitrates	64 (12.1)	72 (15.7)	1756 (25.0)	1602 (28.1)	2494 (18.1)	150 (19.1)	178 (23.5)	3552 (32.4)	2838 (34.8)	6718 (32.5)		
Ivabradine	65 (12.3)	31 (6.8)	296 (4.2)	196 (3.4)	588 (4.3)	80 (10.2)	55 (7.2)	471 (4.3)	260 (3.2)	866 (4.2)		
Lipid-lowering drugs	453 (85.3)	374 (81.5)	4212 (59.9)	3533 (61.9)	8572 (62.5)	633 (80.5)	587 (77.3)	6400 (58.4)	4486 (55.0)	12 106 (58.3)		
Antiplatelet drugs	405 (76.3)	321 (69.9)	4767 (67.8)	3978 (69.7)	9471 (69.0)	517 (65.7)	497 (65.2)	6681 (61.0)	4979 (61.0)	12 674 (61.3)		
Anticoagulant drugs	135 (25.2)	132 (28.8)	2000 (28.5)	1475 (25.9)	3742 (27.3)	237 (30.1)	250 (32.9)	3606 (32.9)	2813 (34.5)	6906 (33.4)		

ACE-I, ACE inhibitors; AHAs, antihyperglycemic agents; ARB, angiotensin II receptor agonist blockers; DPP-4, dipeptidyl peptidase-4; GLP-1RA, glucagon-like peptide-1 receptor agonist; SGLT2i, sodium-glucose cotransporter-2 inhibitor.

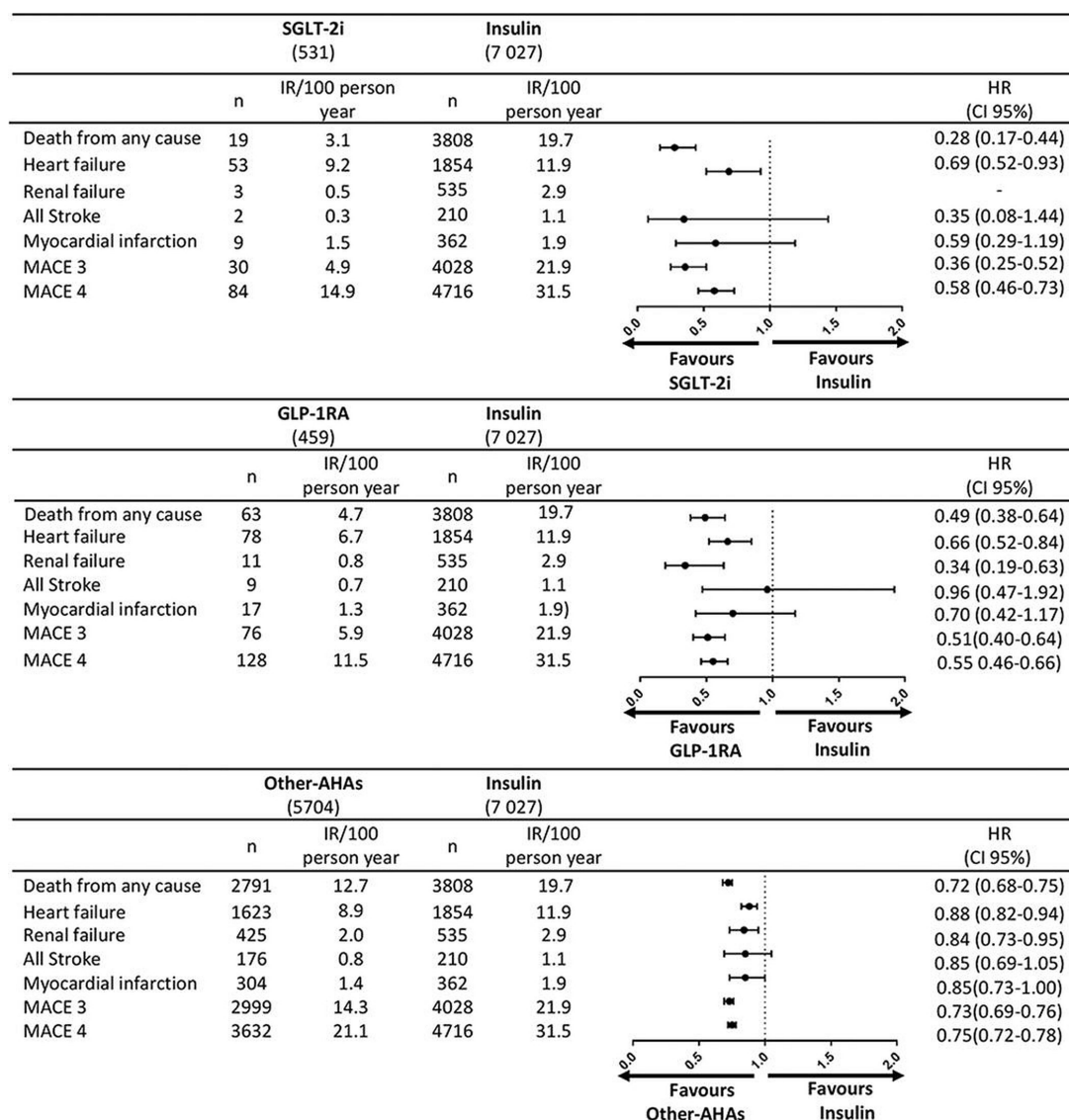


Figure 1 Multivariable Cox proportional hazard regression model based on time-to-first event. Hazard ratios (HRs) and 95% CIs for each outcome, comparing the treatment effects of GLP-1RA, SGLT-2i and other-AHAs versus insulin (reference group) in the Apulia region. Covariates for HR adjustment: age classes (50–59, 60–64, 65–69, 70–74, 75–79, >80 years), sex, index year, myocardial infarction, stroke, atrial fibrillation, chronic obstructive pulmonary disease, cancer, diabetic history and DDCI. AHA, antihyperglycemic agent; DDCI, Drug Derived Complexity Index; GLP-1RA, glucagon-like peptide-1 receptor agonist; IR, incidence rate; MACE, major adverse cardiac event; SGLT-2i, sodium-glucose cotransporter-2 inhibitor.

any cause, first hospitalization for HF and the composite MACE3 and MACE4. In the meta-analysis, GLP-1RA treatment was also associated with a reduction in the risk of stroke.

The association with a reduction in risk of death from any cause was markedly high in both regions (72% in Apulia and 71% in Lombardy) in the SGLT-2i cohort compared with the insulin cohort. A substantial risk reduction for death was also observed in the GLP-1RA cohort (51% in Apulia and 53% in Lombardy). The association with a reduction in risk for first hospitalization for HF for the MACE combined events was also significant in both regions. Seeking explanations for this impressive effect, we addressed the following issues.

Overall treatment in the insulin cohort

This study shows that subjects in the insulin cohort were treated differently from those in the cohorts of new anti-diabetic drugs. First, beta-blockers, recommended therapy for HF, were less frequently prescribed, while nitrates and digitalis were prescribed more frequently. Second, lipid-lowering medications, associated with a reduction in mortality and disease progression in patients with DM with overt CV disease,¹³ were underprescribed to insulin patients.

Insulin dose changed in SGLT-2i and GLP-1RA cohort

Even if insulin appeared as a concomitant treatment in around 65% subjects in the SGLT-2i and GLP-1RA cohorts, a significant decrease was observed in the DDD in particular in the SGLT-2i cohort (online supplemental table 5) with

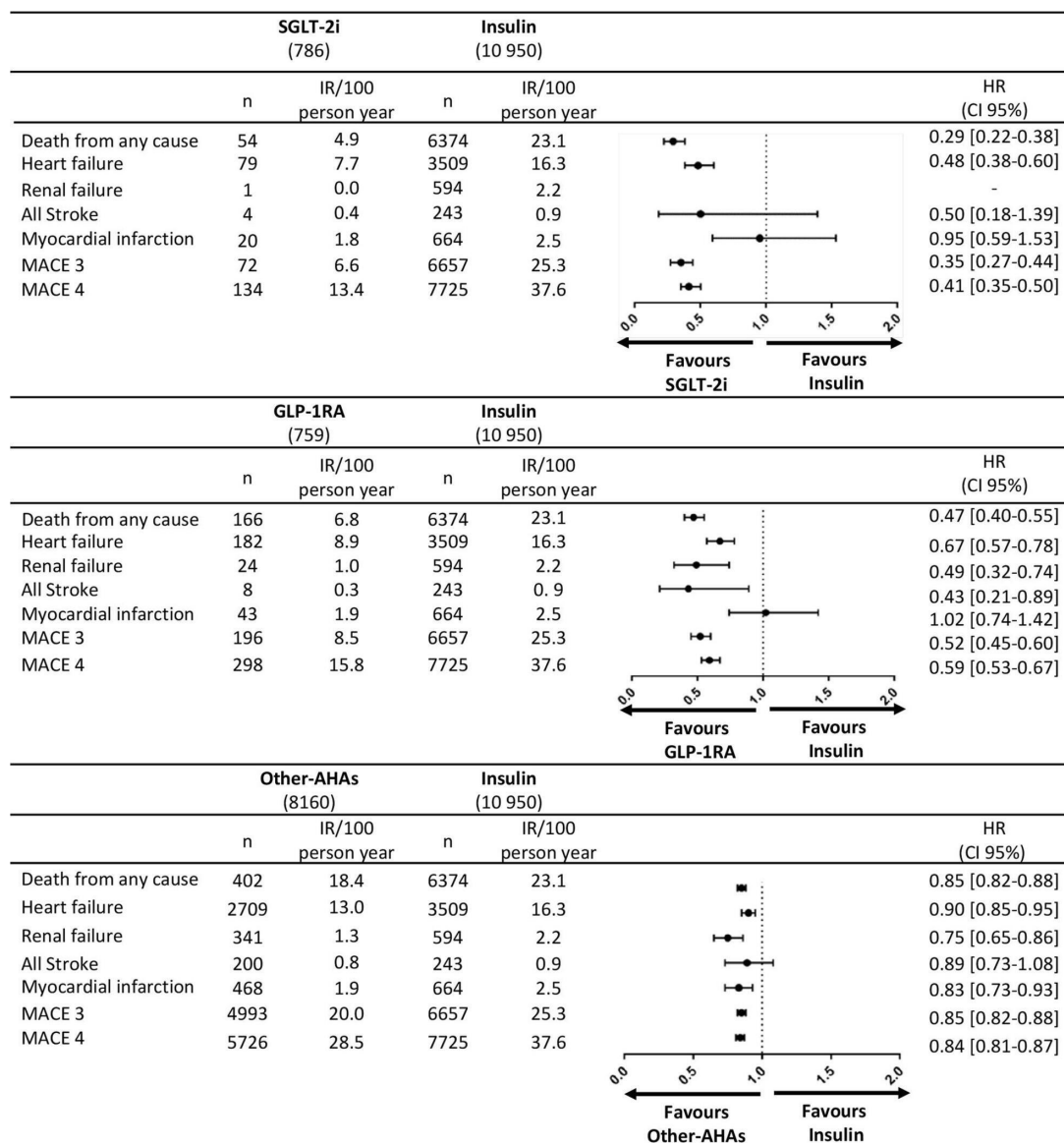


Figure 2 Multivariable Cox proportional hazard regression model based on time-to-first event. Hazard ratios (HRs) and 95% CIs for each outcome, comparing the treatment effects of GLP-1RA, SGLT-2i and other-AHAs versus insulin (reference group) in the Lombardy region. Covariates for HR adjustment: age classes (50–59, 60–64, 65–69, 70–74, 75–79, >80 years), sex, index year, myocardial infarction, stroke, atrial fibrillation, chronic obstructive pulmonary disease, cancer, diabetic history and DDCl. AHA, antihyperglycemic agent; DDCl, Drug Derived Complexity Index; GLP-1RA, glucagon-like peptide-1 receptor agonist; IR, incidence rate; MACE, major adverse cardiac event; SGLT-2i, sodium-glucose cotransporter-2 inhibitor.

a significant reduction in 3-year follow-up of hospitalization for HF and for acute myocardial infarction (online supplemental table 6). These results suggest that SGLT-2i and GLP-1RA can be considered for the reduction of insulin DDD, reducing the related adverse effects.¹⁴ Along this line, Cosmi *et al*¹¹ hypothesized that the reduction in CV events showed by trials that assessed the effect of new antidiabetic drugs was in part due to a reduction in the insulin prescription since the proportion of patients treated with insulin at the study end was lower than at baseline.

Metformin prescription

Another noteworthy finding was the low frequency of metformin prescription in the insulin cohort. Metformin, recommended by international guidelines

as standard baseline therapy for patients with DM and HF, was prescribed only in 29% in Apulia and 22% in Lombardy within the 12 months from study entry (online supplemental table 4A). Metformin is not only associated with a reduction of mortality¹⁵ but makes it possible to reduce the insulin DDD and consequently the probability of its adverse effects.^{4 16} However, most subjects in the SGLT-2i and GLP-1RA cohorts in our study were treated with metformin similarly to those in clinical trials in patients with DM, which showed the benefit of SGLT-2i and GLP-1RA on CV events.¹⁷ An additive interaction between metformin and the new antidiabetic drugs cannot be excluded.¹⁸

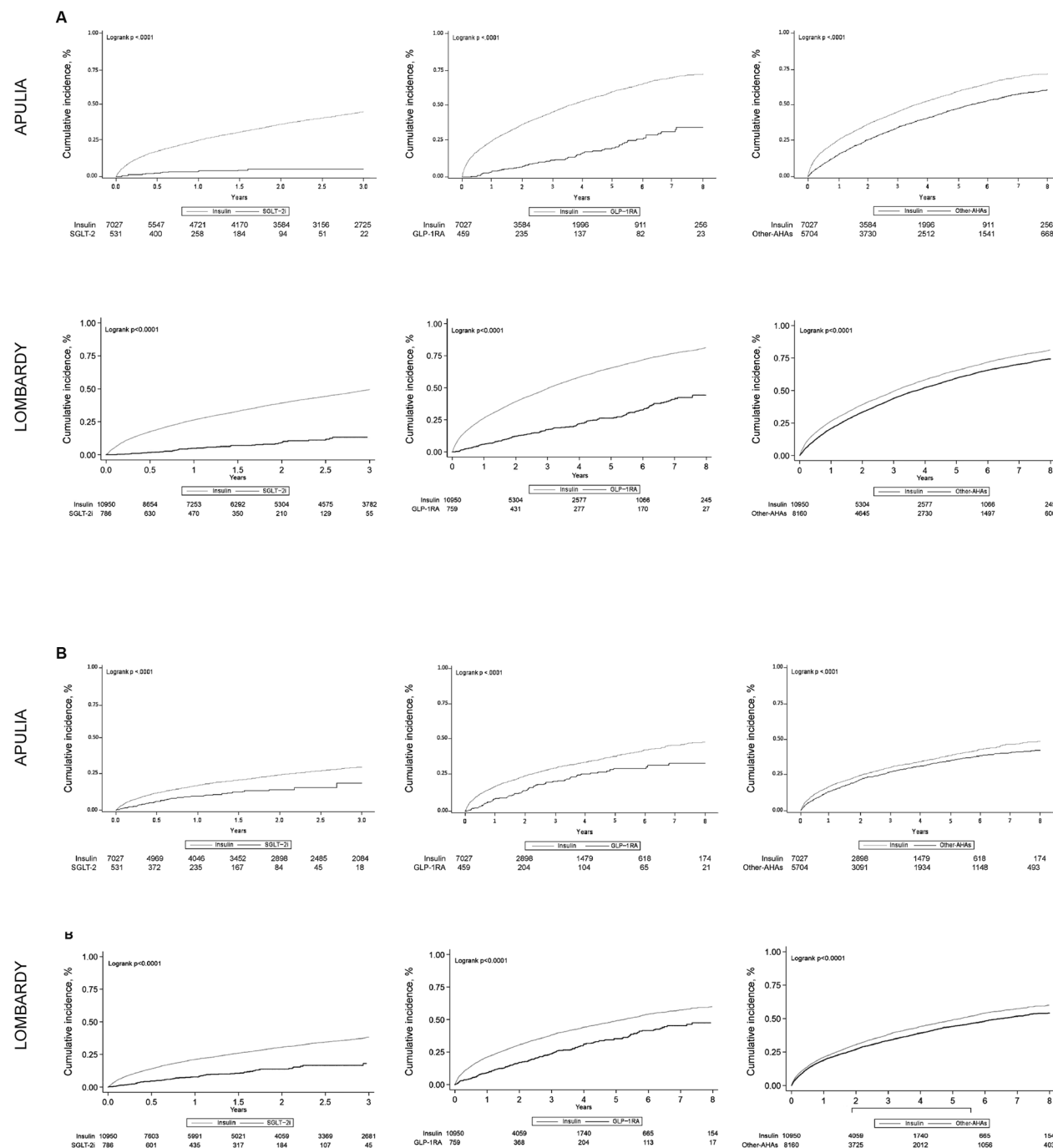


Figure 3 Kaplan-Meier curves of incidence of death from any cause (A) and for first hospitalization for heart failure (B) for the comparison of SGLT-2i, GLP-1 RA and other-AHAs with insulin over all available years of observation in Apulia and Lombardy. AHA, antihyperglycemic agent; GLP-1RA, glucagon-like peptide-1 receptor agonist; SGLT-2i, sodium-glucose cotransporter-2 inhibitor.

SGLT-2i and GLP-1RA: patients and clinical effects

The clinical characteristics of subjects from the SGLT-2i cohort show two interesting features in comparison with the other cohorts from both regions: (1) they more frequently had a history of ischemic heart disease and longer duration of DM, both frequent reasons for insulin prescription, suggesting that prescribing preferences of an antidiabetic treatment are changing and (2) patients are more frequently given the

recommended treatment for HF and for the prevention of CV events, in particular lipid-lowering drugs.

SGLT-2i were originally designed to treat hyperglycemia in T2DM but as they consistently showed an effect in reducing death, HF hospitalization and RF these agents have been successfully tested in HF. Thanks to DAPA-HF¹⁹ and EMPEROR Reduced-HF trials²⁰ this class of drugs is now part of the recommended treatment of HF. A meta-analysis on the 8474 patients showed that

Table 3 Serious adverse events in study cohorts according to treatment in Apulia and Lombardy regions from 2010 to 2018

Serious adverse events	Apulia				Lombardy			
	SGLT-2i (531)	GLP-1RA (459)	Insulin (7027)	Other AHAs (5704)	SGLT-2i (786)	GLP-1RA (759)	Insulin (10 950)	Other AHAs (8160)
	n (%)	n (%)	n (%)	n (%)	n (%)	n (%)	n (%)	n (%)
Hypoglycemia	0 (0.0)	0 (0.0)	27 (0.4)	18 (0.3)	0 (0.0)	2 (0.3)	42 (0.4)	42 (0.5)
Ketoacidosis	0 (0.0)	1 (0.2)	7 (0.1)	7 (0.1)	1 (0.1)	1 (0.1)	7 (0.1)	4 (0.1)
Diabetic coma	0 (0.0)	0 (0.0)	9 (0.1)	8 (0.1)	0 (0.0)	0 (0.0)	22 (0.2)	12 (0.2)
Syncope	1 (0.2)	4 (0.9)	79 (1.1)	95 (1.7)	3 (0.4)	6 (0.8)	142 (1.3)	117 (1.4)
Lower limb amputations	6 (1.1)	2 (0.4)	109 (1.6)	84 (1.5)	7 (0.9)	11 (1.5)	323 (3.0)	161 (2.0)
Fractures	5 (0.9)	9 (2.0)	385 (5.5)	392 (6.9)	11 (1.4)	28 (3.7)	575 (5.3)	535 (6.6)

AHA, antihyperglycemic agent; GLP-1RA, glucagon-like peptide-1 receptor agonist; SGLT2i, sodium-glucose cotransporter-2 inhibitor.

the estimated reduction of risk with SGLT-2i was 13% for death from any cause, 26% for the composite endpoint of CV death and hospitalization for HF and 38% for renal disease.⁸ Our study shows a significant association between SGLT-2i and a reduction in the risk of outcome events when compared with insulin and not with “traditional antidiabetics” as in the placebo group of the two trials listed above.

The ability of SGLT-2 inhibitors to optimize volume status²¹ through: (1) glycosuria and (2) inhibition of the sodium-hydrogen exchanger in the kidneys and the heart may result in a cascade of responses including increased natriuresis, reduced subendocardial ischemia, myocardial fibrosis, and increased cardiac contractility.

The difference between SGLT-2i and standard diuretics may be related to a diuretic effect with transient natriuresis,²² an increase in erythrocyte mass, no vascular contraction and a selective reduction in interstitial fluid that may be unique for SGLT-2i.

On the other hand since the 1980s, investigators have been trying to define the antinatriuretic effects of insulin, and recent evidence suggests that insulin mediates the tubular reabsorption of sodium, acting as an SGLT-2 agonist.²³

First evidence of long-term use of GLP-1RA in HF

During the 8-year follow-up, there was a reduction in adverse clinical outcomes of GLP-1RA compared with insulin in individuals with HF, with a low rate of adverse events in both regions.

Subgroup analyses of patients with prevalent HF from trials in DM have given contradictory results on the effects of GLP-1RA on major clinical events.²⁴ In a meta-analysis of seven trials, GLP-1RA showed a modest but significant reduction in MACE (12%), in mortality from any cause (12%), in a kidney composite outcome – in large part due to the effects on albuminuria – (17%) and in admissions for HF (9%).²⁵

Two small randomized clinical trials assessed the effects on outcomes of a GLP-1RA (liraglutide and albiglutide)

in patients with HF with reduced EF (HFrEF). Both studies, over a six-month follow-up, suggested potential harm with GLP-1RA, although not statistically significant.^{26 27} In a third clinical study again, in patients with HFrEF and 6-month follow-up, liraglutide did not change left ventricular function but increased adverse events.²⁸

Strengths and limitations

This study is based on administrative databases from large cohorts that allow unbiased assessment of the epidemiology of disease, since all residents are covered by the Italian NHS. The databases offer a high level of completeness regarding drug prescriptions, diagnosis, procedures and length of observation; therefore, our analysis includes all individual with DM and HF. The retrospective analysis of databases shares the potential for bias common to similar studies since diagnosis of HF is based solely on hospitalization.

Conscious that usually older and more severely ill people are treated with insulin, we repeated all risk analysis in propensity matched cohorts to ensure a like-with-like comparison with respect to these biases, confirming the reliability of the HR. Moreover, HR analysis was further adjusted for the covariates that resulted significantly different after matching (online supplemental table 1A–C). As observation was limited to 2015–2018 in the SGLT-2i cohort, we homogenized the calendar years and the period of follow-up in cohorts matched for time in a subsequent Kaplan-Meier analysis for death from any cause and first hospitalization for HF (online supplemental figures 2 and 3). Due to the higher rate of renal disease in the insulin cohort and a difference >10% in the propensity matched cohorts, a sensitivity analyses in the whole and propensity matched cohorts were followed excluding patients with an history of renal disease (online supplemental tables 2 and 3). Overall, the results of these sensitivity analyses are consistent with the main analysis.

SGLT-2i were not indicated in Italy between 2015 and 2018 in subjects with RF, hence one of the reasons for

the small number of RF events in this cohort that subsequently avoid further comparative analyses.

In this study, SGLT-2i and GLP-1RA were prescribed in less than 5% of individuals. Despite the proven effectiveness in CV risk and short-term mortality reduction of these drugs in high CV risk patients, their underprescription is still an open issue.²⁹

The most frequently reported side effects are uncomplicated urogenital tract infection for SGLT-2i and gastrointestinal intolerance and increased frequency of gallbladder disease for GLP-1RA, events that do not always require hospitalization and in consequence are not identifiable in our database.

In fact, due to the limitations that are typical of all the studies based on administrative databases, different types of information as those related to biomarker concentrations, out-of-pocket treatments or adverse drug reactions not requiring a specific medical procedure or hospitalization (as hypoglycemia or urinary infections) are not collected.

CONCLUSIONS

This analysis in patients with DM and HF showed that compared with insulin SGLT-2i and GLP-1RA significantly reduce death from any cause, first hospitalization for HF and the composite MACE3 and MACE4. These medications had high safety profiles compared with other-AHAs and particularly with insulin. However, individuals in the insulin cohort were undertreated with other recommended CV medications and metformin. General optimization of antidiabetic and CV treatment is still necessary to reduce major events in this high-risk population.

Author affiliations

¹Department of Cardiovascular Medicine, Laboratory of Cardiovascular Clinical Pharmacology, Mario Negri Institute for Pharmacological Research IRCCS, Milano, Italy

²Department of Cardiovascular Medicine, Laboratory of Cardiovascular Prevention, Mario Negri Institute for Pharmacological Research IRCCS, Milano, Italy

³Department of Health Policy, Laboratory of Geriatric Epidemiology, Mario Negri Institute for Pharmacological Research IRCCS, Milano, Italy

⁴Medonline-Statte, ASL-TA, Taranto, Puglia Health System, Bari, Italy

⁵Agenzia Regionale Strategica per la Salute ed il Sociale - AReSS Puglia, Area Epidemiologia e Care Intelligence, Puglia Health System, Bari, Italy

⁶Department of Public Health, Laboratory of Medical Research and Consumer Involvement, Mario Negri Institute for Pharmacological Research, Milano, Italy

⁷Region Health Ministry, Lombardy Region, Milano, Italy

⁸Agenzia Regionale Strategica per la Salute ed il Sociale - AReSS Puglia, Area Innovazione Sociale, Sanitaria e di Sistema-CRSS, Puglia Health System, Bari, Italy

⁹Agenzia Regionale Strategica per la Salute ed il Sociale - AReSS Puglia, Area Valutazione e Ricerca, Puglia Health System, Bari, Italy

¹⁰Mario Negri Institute for Pharmacological Research IRCCS, Milano, Italy

Acknowledgements We thank Giuseppe Preziosi, Monica Arivetti and Giovanna Rigotti from ARIA S.p.A., Alfredo Bevilacqua from Laife Reply S.p.A., Marco D. Forlani from T Bridge-BV Tech S.p.A. and Igor Monti from Istituto di Ricerche Farmacologiche Mario Negri IRCCS who kindly assisted us with data collection. We thank the Director of the Regional Agency for Health and Social Affairs of Puglia (AReSS-Puglia) for data availability and collaboration. We are grateful to Judith Bagott for language editing. We thank Antonio Nicolucci and the Scientific

Committee from Fondazione Familia Casiraghi for their valuable comments on an earlier version of this manuscript.

Contributors LS, SG, FR, MT, MCR, VL and RL contributed to the conception and design of the study and data interpretation; AD, LB, IF, EA and EAG contributed to the data extraction; FR, PC and GC contributed to data analysis; LS, MT, MB and RL conducted the quality assessment. All authors contributed to drafting the manuscript or revising it critically for important intellectual content, and all authors approved the manuscript. The authors had full access to all the data in the study and the final responsibility for the decision to submit for publication. LS is responsible for the overall content as guarantor and attests that all listed authors meet authorship criteria.

Funding This work was partially supported by a grant from the Health Authorities of Lombardy and Apulia that were involved in data collection and from the Fondazione Famiglia Casiraghi-Premio per la Ricerca Cardiovascolare 2017 nelle Unità Operative di Cardiologia della Regione Lombardia. Access to data is allowed within the agreements between the IRFMN and the Regional Health Ministry of Lombardy, and between the IRFMN and the Regional Healthcare Agency of Apulia.

Competing interests None declared.

Patient consent for publication Not required.

Ethics approval In Italy, studies using retrospective aggregated-anonymous data from administrative databases do not require ethics committee/institutional review board approval or notification.

Provenance and peer review Not commissioned; externally peer reviewed.

Data availability statement Data are available on reasonable request.

Supplemental material This content has been supplied by the author(s). It has not been vetted by BMJ Publishing Group Limited (BMJ) and may not have been peer-reviewed. Any opinions or recommendations discussed are solely those of the author(s) and are not endorsed by BMJ. BMJ disclaims all liability and responsibility arising from any reliance placed on the content. Where the content includes any translated material, BMJ does not warrant the accuracy and reliability of the translations (including but not limited to local regulations, clinical guidelines, terminology, drug names and drug dosages), and is not responsible for any error and/or omissions arising from translation and adaptation or otherwise.

Open access This is an open access article distributed in accordance with the Creative Commons Attribution Non Commercial (CC BY-NC 4.0) license, which permits others to distribute, remix, adapt, build upon this work non-commercially, and license their derivative works on different terms, provided the original work is properly cited, appropriate credit is given, any changes made indicated, and the use is non-commercial. See: <http://creativecommons.org/licenses/by-nc/4.0/>.

ORCID ID

Lidia Staszewsky <http://orcid.org/0000-0002-3702-1038>

REFERENCES

- Kannel WB, Hjortland M, Castelli WP. Role of diabetes in congestive heart failure: the Framingham study. *Am J Cardiol* 1974;34:29–34.
- Jia G, Hill MA, Sowers JR. Diabetic cardiomyopathy: an update of mechanisms contributing to this clinical entity. *Circ Res* 2018;122:624–38.
- Seferović PM, Petrie MC, Filippatos GS, *et al.* Type 2 diabetes mellitus and heart failure: a position statement from the heart failure association of the European Society of cardiology. *Eur J Heart Fail* 2018;20:853–72.
- Dunlay SM, Givertz MM, Aguilar D, *et al.* Type 2 diabetes mellitus and heart failure: a scientific statement from the American heart association and the heart failure Society of America: this statement does not represent an update of the 2017 ACC/AHA/HFSA heart failure guideline update. *Circulation* 2019;140:e294–324.
- Cosmi F, Shen L, Magnoli M, *et al.* Treatment with insulin is associated with worse outcome in patients with chronic heart failure and diabetes. *Eur J Heart Fail* 2018;20:888–95.
- Shen L, Rørth R, Cosmi D, *et al.* Insulin treatment and clinical outcomes in patients with diabetes and heart failure with preserved ejection fraction. *Eur J Heart Fail* 2019;21:974–84.
- Li S, Vandvik PO, Lytvyn L, *et al.* SGLT-2 inhibitors or GLP-1 receptor agonists for adults with type 2 diabetes: a clinical practice guideline. *BMJ* 2021;373:n1091.
- Zannad F, Ferreira JP, Pocock SJ, *et al.* Cardiac and kidney benefits of Empagliflozin in heart failure across the spectrum of

- kidney function: insights from EMPEROR-Reduced. *Circulation* 2021;143:310–21.
- 9 Seferović PM, Coats AJS, Ponikowski P, *et al.* European Society of Cardiology/Heart failure association position paper on the role and safety of new glucose-lowering drugs in patients with heart failure. *Eur J Heart Fail* 2020;22:196–213.
 - 10 Packer M, Butler J, Zannad F, *et al.* Effect of Empagliflozin on worsening heart failure events in patients with heart failure and preserved ejection fraction: EMPEROR-Preserved trial. *Circulation* 2021;144:1284–94.
 - 11 Cosmi F, Laini R, Nicolucci A. Semaglutide and cardiovascular outcomes in patients with type 2 diabetes. *N Engl J Med* 2017;376:890.
 - 12 Baviera M, Genovese S, Lepore V, *et al.* Lower risk of death and cardiovascular events in patients with diabetes initiating glucagon-like peptide-1 receptor agonists or sodium-glucose cotransporter-2 inhibitors: a real-world study in two Italian cohorts. *Diabetes Obes Metab* 2021;23:1484–95.
 - 13 Piepoli MF, Abreu A, Albus C, *et al.* Update on cardiovascular prevention in clinical practice: a position paper of the European association of preventive cardiology of the European Society of cardiology. *Eur J Prev Cardiol* 2020;27:181–205.
 - 14 Gamble J-M, Chibrikov E, Twells LK, *et al.* Association of insulin dosage with mortality or major adverse cardiovascular events: a retrospective cohort study. *Lancet Diabetes Endocrinol* 2017;5:43–52.
 - 15 Eurich DT, Weir DL, Majumdar SR, *et al.* Comparative safety and effectiveness of metformin in patients with diabetes mellitus and heart failure: systematic review of observational studies involving 34,000 patients. *Circ Heart Fail* 2013;6:395–402.
 - 16 Inzucchi SE, Masoudi FA, McGuire DK. Metformin in heart failure. *Diabetes Care* 2007;30:e129.
 - 17 Singh AK, Singh R. Does background metformin therapy influence the cardiovascular outcomes with SGLT-2 inhibitors in type 2 diabetes? *Diabetes Res Clin Pract* 2021;172:108536.
 - 18 van Baar MJB, van Ruiten CC, Muskiet MHA, *et al.* SGLT2 inhibitors in combination therapy: from mechanisms to clinical considerations in type 2 diabetes management. *Diabetes Care* 2018;41:1543–56.
 - 19 McMurray JJV, Solomon SD, Inzucchi SE, *et al.* Dapagliflozin in patients with heart failure and reduced ejection fraction. *N Engl J Med* 2019;381:1995–2008.
 - 20 Packer M, Anker SD, Butler J, *et al.* Cardiovascular and renal outcomes with Empagliflozin in heart failure. *N Engl J Med* 2020;383:1413–24.
 - 21 Jensen J, Omar M, Kistorp C, *et al.* Effects of empagliflozin on estimated extracellular volume, estimated plasma volume, and measured glomerular filtration rate in patients with heart failure (Empire HF renal): a prespecified substudy of a double-blind, randomised, placebo-controlled trial. *Lancet Diabetes Endocrinol* 2021;9:106–16.
 - 22 Mordi NA, Mordi IR, Singh JS, *et al.* Renal and cardiovascular effects of SGLT2 inhibition in combination with loop diuretics in patients with type 2 diabetes and chronic heart failure: the RECEDE-CHF trial. *Circulation* 2020;142:1713–24.
 - 23 Brands MW. Role of insulin-mediated antinatriuresis in sodium homeostasis and hypertension. *Hypertension* 2018;72:1255–62.
 - 24 Khan MS, Fonarow GC, McGuire DK, *et al.* Glucagon-Like peptide 1 receptor agonists and heart failure: the need for further evidence generation and practice guidelines optimization. *Circulation* 2020;142:1205–18.
 - 25 Kristensen SL, Rørth R, Jhund PS, *et al.* Cardiovascular, mortality, and kidney outcomes with GLP-1 receptor agonists in patients with type 2 diabetes: a systematic review and meta-analysis of cardiovascular outcome trials. *Lancet Diabetes Endocrinol* 2019;7:776–85.
 - 26 Margulies KB, Hernandez AF, Redfield MM, *et al.* Effects of liraglutide on clinical stability among patients with advanced heart failure and reduced ejection fraction: a randomized clinical trial. *JAMA* 2016;316:500–8.
 - 27 Lepore JJ, Olson E, Demopoulos L, *et al.* Effects of the novel long-acting GLP-1 agonist, Albiglutide, on cardiac function, cardiac metabolism, and exercise capacity in patients with chronic heart failure and reduced ejection fraction. *JACC Heart Fail* 2016;4:559–66.
 - 28 Jorsal A, Kistorp C, Holmager P, *et al.* Effect of liraglutide, a glucagon-like peptide-1 analogue, on left ventricular function in stable chronic heart failure patients with and without diabetes (LIVE)-a multicentre, double-blind, randomised, placebo-controlled trial. *Eur J Heart Fail* 2017;19:69–77.
 - 29 Nelson AJ, Pagidipati NJ, Aroda VR, *et al.* Incorporating SGLT2i and GLP-1RA for cardiovascular and kidney disease risk reduction: call for action to the cardiology community. *Circulation* 2021;144:74–84.

Supplemental material

Insulin treatment in patients with diabetes mellitus and heart failure in the era of new antidiabetic medications.

Brief title: *Insulin and new antidiabetics in heart failure*

Lidia Staszewsky¹, Marta Baviera², Mauro Tettamanti³, Pierluca Colacioppo², Fabio Robusto⁴, Antonio D'Ettorre⁵, Vito Lepore⁶, Ida Fortino⁷, Lucia Bisceglia⁵, Ettore Attolini⁸, Elisabetta Graps⁹, Gianluca Caldo², Maria Carla Roncaglioni², Silvio Garattini⁹, Roberto Latini¹

¹Department of Cardiovascular Medicine. Laboratory of Cardiovascular Clinical Pharmacology, Istituto di Ricerche Farmacologiche Mario Negri IRCCS, Milan, Italy;

²Department of Cardiovascular Medicine. Laboratory of Cardiovascular Prevention, Istituto di Ricerche Farmacologiche Mario Negri IRCCS, Milan, Italy;

³Laboratory of Geriatric Neuropsychiatry, Istituto di Ricerche Farmacologiche Mario Negri IRCCS, Milan, Italy

⁴Puglia Health System. Medonline-Statte, ASL-TA, Taranto, Italy;

⁵Puglia Health System. Agenzia Regionale Strategica per la Salute ed il Sociale - AReSS Puglia. Area Epidemiologia e Care Intelligence -, Bari, Italy;

⁶Department of Public Health. Laboratory of Medical Research and Consumer Involvement, Istituto di Ricerche Farmacologiche Mario Negri IRCCS, Milan, Italy;

⁷Region Health Ministry, Lombardy Region, Milan, Italy;

⁸Puglia Health System. Agenzia Regionale Strategica per la Salute ed il Sociale - AReSS Puglia. Area Innovazione Sociale, Sanitaria e di Sistema-CRSS -, Bari, Italy;

⁹Puglia Health System. Agenzia Regionale Strategica per la Salute ed il Sociale - AReSS Puglia. Area Valutazione e Ricerca-, Bari, Italy;

¹⁰ Istituto di Ricerche Farmacologiche Mario Negri IRCCS, Milan, Italy.

CONTENTS:

- **Annex 1:** Anatomical Therapeutic Chemical Classification (ATC code)
- **Annex 2:** COMORBIDITY (in the five years before entry in the study cohort)
- **Annex 3:** ICD-9CM code of clinical events
- **Annex 4:** ICD-9CM code of safety event
- **Annex 5:** Sensitivity analyses

- **Supplementary references**
- **Supplementary tables**
-
- **Supplementary Table 1A.** Sensitivity analysis. Hazard ratios for clinical events in matched cohorts from Apulia region
- **Supplementary Table 1B.** Sensitivity analysis. Hazard ratios for clinical events in matched cohorts from Lombardy region
- **Supplementary Table 2.** Sensitivity analysis: incidence rate and hazard ratios in subjects without history of renal disease in the 5 years before study entry in whole cohorts. (A) Apulia, (B) Lombardy.
- **Supplementary Table 3.** Sensitivity analysis: incidence rate and hazard ratios in subjects without history of renal disease in the 5 years before study entry in propensity matched cohorts. (A) Apulia, (B) Lombardy.
- **Supplementary Table 4A.** Frequency of antihyperglycemic drugs prescribed in the previous 12-month before entering in the study cohort.
- **Supplementary Table 4B** Frequency of antihyperglycemic drugs prescribed in the 12 months after entering the study (sum: pts who continued + pts who added-on antihyperglycemic drugs.
- **Supplementary Table 5.** Insulin dose three-years after starting treatment with SGLT-2i or GLP-1RA in Apulia.
- **Supplementary Table 6.** Insulin dose reduction in alive patients during three-years follow-up. Cardiovascular events and renal failure incidence rate ratio three-years pre and three-years post SGLT-2i or GLP-1RA treatment initiation in Apulia.

Supplementary Figures

- **Supplementary Figure 1.** Study diagram

- **Supplementary Figure 2.** Survival Kaplan-Meier curves for three-year death from any cause (2015-2018) in propensity matched cohorts.
- **Supplementary Figure 3.** Kaplan-Meier curves for three-year first hospitalization for heart failure (2015-2018) in propensity matched cohorts.
- **Supplementary Figure 4.** Meta-analysis from combined data from Apulia and Lombardy regions (34.376 subjects) comparing the effects of SGLT-2i, GLP-1RA and Other-AHAs with insulin treatment, on the selected outcomes..
- **Supplementary Figure 5.** Insulin concomitant treatment in SGLT-2i, GLP-1RA and Other-AHAs cohorts.

- ANNEX 1

Anatomical Therapeutic Chemical Classification (ATC code)

Medications	ATC-code
GLP-1 RA	A10BX04; A10BX07; A10BX10; A10BX13; A10BX14; A10BJ*
SGLT-2i	A10BK*; A10BX09; A10BX11; A10BX12; A10BD15; A10BD16; A10BD19; A10BD20; A10BD21
Insulin	A10A*; A10AB*; A10AE*; A10AC*; A10AD*
Biguanide- (Metformin)	A10BA*; A10BD01; A10BD02; A10BD03; A10BD05; A10BD07; A10BD08; A10BD10; A10BD11; A10BD13; A10BD14; A10BD15; A10BD16; A10BD17; A10BD18; A10BD20
Sulfonylureas	A10BB*; A10BD01; A10BD02; A10BD04; A10BD06
Meglitinides	A10BX02; A10BX03; A10BX08; A10BD14;
Glitazones	A10BG*; A10BD03; A10BD04; A10BD05; A10BD06; A10BD09; A10BD12
Alpha-glucosidase inhibitors –(Acarbose)	A10BF*; A10BD17
DDP-4i	A10BH*; A10BD07; A10BD08; A10BD09; A10BD10; A10BD11; A10BD12; A10BD13;

	A10BD18; A10BD19; A10BD21; A10BH51
Antihypertensive agents	C02*; C03*; C03; C04*; C07*; C08*, C09*; C10BX03; C10BX09
ACE-I/ARBs	C09*; C10BX10
Lipid lowering agents	C10*
Antiplatelets	N02BA01; B01AC*; C10BX08; C10BX02; C10BX05; C10BX01;
Sucubitril-valsartan	CO9DX04
Antiarrhythmics	C01B
Digitalis	C01A
Calcium antagonist	C08
Nitrates	C01DA
Ivabradine	C01EB17
GLP-1 RA: glucagon-like peptide-1 receptor agonist; SGLT-2i: sodium glucose cotransporter 2 inhibitors; DPP-4i: dipeptidyl peptidase-4 inhibitors; ACE-I: angiotensin-converting enzyme inhibitors; ARBs: angiotensin II receptor agonist blockers	

ANNEX 2**COMORBIDITY (in the previous five years before entry in the study)**

Diagnosis	ICD-9CM
Cerebrovascular disease	433.01; 433.11; 433.21; 433.31; 433.81; 433.91; 434.01 434.91; 430; 431; 432; 432.0; 432.1; 432.9; 435; 435.0; 435.1; 435.2; 435.3; 435.8; 435.9; 435.9; 436; 433.10; 433.20; 433.30; 38.11; 38.12; 433; 433.0; 433.00; 433.1; 433.10; 433.2; 433.20; 433.3; 433.30; 433.8; 433.80; 433.9; 433.90; 434; 434.0; 434.00; 434.9; 434.90; 437; 437.0; 437.1
Acute myocardial infarction	410.x; 412
Other ischemic disease	413.x; 414.x
Heart failure	428.x; 398.91; 402.01; 402.11; 402.91; 404.01; 404.03; 404.11; 404.13; 404.91; 404.93
Atrial fibrillation	427.31; 427.32
Cardiovascular interventions	36.x
Endovascular valve replacement or Heart valve replacement or Annuloplasty	35.x

\or Valvuloplasty	
Device therapy	37.62; 37.65; 37.66; 37.67; 37.68; 0050; 0051; 0053; 0054; 37.94; 37.96; 37.97; 37.98; 37.94; 37.96; 37.97; 37.98; 0050; 0051; 0053; 0054; 37.71; 37.74; 37.82; 37.83; 37.85; 37.87; 37.89
Peripheral vascular disease	440.2; 440.20; 440.21; 440.22; 440.23; 440.24; 440.29; 440.3; 440.30; 440.3; 440.32; 443.81; 250.7; 250.70; 250.71; 250.72; 250.73; 39.50; 38.18; 38.08; 39.90; 39.25; 39.26; 39.29
Lower limb complication	736 .70; 707.1; 440.23; 707.1; 84.13; 84.15; 84.17; 84.11; 84.12; 730.06; 730.07; 730.16; 730.17; 730.26; 730.27; 730.86; 730.87; 730.96; 730.97; 681.1; 681.10; 681.9; 682.6; 682.7; 711.97; 785.4; 440.24
Pulmonary embolism	415.1; 415.11; 415.19
Renal disease	585.x; V451; 39.95; 54.98; V561; V562; V563; V563.1; V563.2; 38.95; 39.27; 39.42; 39.43; 581.81

Neuropathy	350; 350.0; 350.1; 350.2; 350.8; 350.9; 351; 351.0; 351.1 351.8; 351.9; 354; 354.0; 354.1; 354.2; 354.3; 354.4; 354.5 354.8; 354.9; 355; 355.0; 355.1; 355.2; 355.3; 355.4; 355.5; 355.6; 355.7; 355.71; 355.79; 355.8; 355.9; 378.51; 378.52; 378.53; 378.54; 357.2; 337.1
Diabetic retinopathy	362.0; 362.01; 362.02; 362.01 + 14.24; 362.02 + 14.24; 362.55; 361; 364.42; 365.63; 369.xx
Chronic obstructive pulmonary disease	491.x;492.x;493.x; 494.x;496.x;518.81; 518.83; 518.84
Cancer	140 -165, 170 -208, 210 - 239, 2592

ANNEX 3**ICD-9CM code of study clinical events**

Diagnosis	ICD-9CM code
Heart failure	428.x; 398.91; 402.01; 402.11; 402.91; 404.01; 404.03; 404.11; 404.13; 404.91; 404.93
Acute myocardial infarction	410.x; 412
Stroke (ischemic, hemorrhagic)	[433.01; 433.11; 433.21; 433.31; 433.81; 433.91; 434.01; 434.91; 430; 431; 432; 432.0; 432.1; 432.9
Renal failure	585.x; V451; 39.95; 54.98; V561; V562; V563; V563.1; V563.2; 38.95; 39.27; 39.42; 39.43; 581.81
Unstable angina	411; 411.0; 411.1; 411.8; 411.81; 411.89

ANNEX 4**ICD-9CM code of safety events**

Diagnosis	ICD-9CM code
Hypoglycemia	2510; 2512
Ketoacidosis	2501; 25010; 25011; 25012; 25013
Diabetic coma	25030; 25031; 25032; 25033
Lower limb amputations	8411; 8412; 8413; 8415; 8417
Renal failure	584; 5845; 5846; 5847; 5848; 5849
Syncope	9921; 7802
Bone fractures	800; 829

ANNEX 5.

Sensitivity analyses.

The consistency in treatment association with outcomes was assessed in: i) propensity matched cohorts, ii) unmatched and matched propensity cohort (MPC) of subjects without a history of renal disease and iii) as SGLT-2i received first marketing authorization approval in Italy in 2014, to homogenize the calendar years and the follow-up; it was considered first-time antidiabetic agent uses between 1 January 2015 and 31 December 2018 in propensity matched cohorts, then a Kaplan-Meier analysis for death from any cause and first hospitalization for HF was conducted. In i) and ii) cohorts time-to-first event analysis was conducted using multivariable Cox proportional hazard models; HRs and 95% CI for each outcome was estimated, comparing the effects of GLP-1RA, SGLT-2i and other-AHAs versus insulin; in MPC hazard ratios (HRs) were adjusted for variables with standardized differences >10%.

Propensity score matching

Participants were matched on the logit of the propensity score using callipers of width equal to 0.1 of the standard deviation of the logit of the estimated propensity score. GLP-1 RA, SGLT-2i and other-AHAs cohorts were matched with insulin in a 1:1 ratio using variables related to outcomes of interest: age classes (50-59; 60-64; 65-69; 70-74; 75-79; >80), sex, stroke, myocardial infarction, atrial fibrillation, renal disease, chronic obstructive pulmonary disease, cancer, duration of diabetes, and the Drug Derived Complexity Index (DDCI), a proxy of comorbidities (1).

The adequacy (congruency) of PSM was assessed from the standardized mean differences (SMD) of post-matching patients' characteristics: good balance is conventionally set at SMD <0.10 (2).

The baseline characteristics of matched populations of subjects according to treatment status (SGLT-2i, GLP-1RA, Other-AHAs vs insulin), from 2010 to 2018, are presented in the three tables below: [A]. SGLT-2i vs insulin, [B]: GLP-1RA vs Insulin, [C] Other-AHAs vs Insulin.

TABLES [(A), (B), (C)]: Baseline characteristics of matched populations of subjects with diabetes and heart failure according to treatment status, from 2010 to 2018. [A]. SGLT-2i vs insulin, [B]: GLP-1RA vs Insulin, [C] Other-AHAs vs Insulin.

Matching variables related to outcomes of interest: age classes, sex, year of entry in the cohort, haemorrhagic and ischemic stroke, myocardial infarction, atrial fibrillation, chronic obstructive pulmonary disease, cancer, DDCI, duration of diabetes.

(A)

Variable	Apulia			Lombardy		
	SGLT-2i (414)	Insulin (414)	Standardized differences	SGLT-2i (715)	Insulin (715)	Standardized differences
Mean age, mean± SD	70.5 ± 7.8	71.1 ± 8.5	-0.07	71.3 ± 7.6	72.4 ± 9.1	-0.12
Age categories, n (%)						
50-59 yr	42 (10.14)	41 (9.90)	0.01	49 (6.85)	55 (7.69)	0.10
60-64 yr	49 (11.84)	48 (11.59)		75 (10.49)	82 (11.47)	
65-69 yr	86 (20.77)	87 (21.01)		151 (21.12)	118 (16.50)	
70-74 yr	103 (24.88)	103 (24.88)		187 (26.15)	190 (26.57)	
75-79 yr	81 (19.57)	81 (19.57)		151 (21.12)	157 (21.96)	
80+	53 (12.80)	54 (13.04)		102 (14.27)	113 (15.80)	
Gender (female), n (%)	168 (40.6)	167 (40.3)	0.00	236 (33.0)	240 (33.6)	-0.01
Comorbidities, n (%)						
Cerebrovascular disease	89 (21.5)	61 (14.7)	0.17	84 (11.7)	85 (11.8)	0.00
- Stroke	18 (4.4)	10 (2.4)	0.11	20 (2.8)	27 (3.8)	-0.05
Ischemic heart disease						
- Myocardial infarction	112 (27.1)	108 (26.1)	0.02	183 (25.6)	202 (28.2)	-0.05
-Other coronary disease	210 (50.7)	184 (44.4)	0.12	344 (48.1)	321 (44.9)	0.06
Atrial fibrillation	107 (25.9)	106 (25.6)	0.01	207 (28.9)	203 (28.4)	0.01
Peripheral vascular disease	72 (17.4)	61 (14.7)	0.07	95 (13.3)	98 (13.7)	-0.01
Lower limb complication	4 (1.0)	10 (2.4)	-0.11	24 (3.3)	31 (4.2)	-0.05
Pulmonary embolism	1 (0.2)	6 (1.5)	-0.13	3 (0.4)	10 (1.4)	-0.10
Renal failure	59 (14.3)	100 (24.2)	-0.25	57 (8.0)	183 (25.6)	-0.48
Neuropathy	22 (5.3)	6 (1.5)	0.21	38 (5.3)	12 (1.7)	0.19
Diabetic retinopathy	1 (0.2)	2 (0.5)	-0.04	4 (0.5)	4 (0.5)	0.00
Chronic obstructive pulmonary disease	101 (24.4)	125 (30.2)	-0.13	136 (19.0)	135 (18.9)	0.00
Cancer	46 (11.1)	45 (10.9)	0.01	70 (9.8)	62 (8.7)	-0.01
DDCI Index, median [Q1-Q3]	8 [7-10]	8 [7-10]	0.02	8 [7-10]	8 [6-10]	0.01
Number of hospital admission, median [Q1-Q3]	3 (2-5)	3 (2-5)	0.09	3 [2-5]	3 [2-6]	-0.15
History of diabetes, n (%)						
0-4 yr	2 (0.5)	2 (0.5)	0.14	63 (8.3)	68 (9.0)	0.04
5-9 yr	83 (20.1)	84 (20.3)		188 (24.8)	199 (26.2)	
10+yr	329 (79.5)	328 (79.2)		507 (66.9)	491 (64.8)	
Median [Q1-Q3]	10	10	-0.01	10	10	0.12

	[8-10]	[9-10]		[8-10]	[8-10]	
Cardiovascular interventions, n (%)						
Percutaneous coronary intervention/ Coronary artery by-pass/ Other revascularizations	34 (8.2)	52 (12.6)	-0.14	85 (11.9)	83 (11.6)	0.00
Heart valve replacement/ Annuloplasty/Valvuloplasty	11 (2.7)	28 (6.8)	-0.19	47 (6.6)	41 (5.7)	0.03
Device therapy, n (%)						
Ventricular assist device	1 (0.2)	0 (0.0)	0.07	0 (0.0)	2 (0.3)	-0.07
Implantable cardioverter defibrillator	38 (9.2)	47 (11.4)	-0.07	49 (6.8)	67 (9.4)	-0.09
Cardiac resynchronization therapy	15 (3.6)	10 (2.4)	0.07	65 (9.1)	57 (8.0)	0.04
Pacemaker implantation	28 (6.8)	29 (7.0)	-0.01	42 (5.9)	57 (8.0)	-0.08
Antihyperglycemic drugs						
GLP-1RA	5 (1.2)	1 (0.2)	0.11	10 (1.3)	3 (0.4)	0.10
SGLT-2i	0 (0.0)	0 (0.0)	0.00	0 (0.0)	0 (0.0)	0.00
Other-AHAs	394 (95.8)	409 (98.8)	-0.21	670 (93.7)	702 (98.2)	-0.22
Insulin	288 (69.6)	0 (0.0)	2.13	496 (69.4)	0 (0.0)	2.1
Metformin	373 (90.1)	364 (87.9)	0.07	626 (87.5)	624 (87.3)	-0.00
Sulfonylureas	154 (37.2)	218 (52.7)	-0.31	393 (55.0)	502 (70.2)	-0.32
Glinides	156 (37.7)	192 (46.4)	-0.17	115 (16.1)	215 (30.1)	-0.33
Glitazones	63 (15.)	58 (14.0)	0.03	112 (15.6)	100 (14.0)	0.02
Acarbose	47 (11.4)	34 (8.2)	0.11	65 (9.1)	69 (9.6)	-0.01
DDP4-inhibitor	147 (35.5)	132 (31.9)	0.07	197 (27.5)	247 (34.5)	-0.15
No Antihyperglycemic drugs	0 (0.0)	5 (0.0)	0.15	5 (0.7)	13 (1.8)	0.10
Other medications of interest (in the previous 12 months)						
ACE-I/ARBS	337 (81.4)	313 (75.6)	0.14	607 (84.9)	568 (79.4)	0.14
Sacubitril-valsartan	0 (0.0)	0 (0.0)	0.00	9 (1.2)	5 (0.7)	0.05
Beta blockers	318 (76.8)	269 (65.0)	0.26	577 (80.7)	526 (73.6)	0.17
Diuretics	304 (73.4)	309 (74.6)	-0.03	587 (82.1)	568 (79.4)	0.06
Mineralocorticoid receptor antagonist	152 (36.7)	155 (37.4)	-0.02	276 (38.6)	251 (35.1)	0.07
Antiarrhythmics	49 (11.8)	72 (17.4)	-0.16	104 (14.5)	130 (18.2)	-0.09
Digital drugs	43 (10.4)	48 (11.6)	-0.04	60 (8.4)	47 (6.6)	0.06
Ca-antagonists	108 (26.1)	100 (24.2)	0.04	255 (35.6)	281 (39.3)	-0.07
Nitrates	56 (13.5)	43 (10.4)	0.09	139 (19.4)	144 (20.1)	-0.01
Ivabradine	43 (10.4)	38 (9.2)	0.04	64 (8.9)	69 (9.6)	0.02
Lipid lowering drugs	348 (84.1)	296 (71.5)	0.30	577 (80.7)	485 (67.8)	0.29
Antiplatelet drugs	312 (75.4)	290 (70.1)	0.12	460 (64.3)	434 (60.7)	0.07
Anticoagulant drugs	118 (28.5)	116 (28.0)	0.02	224 (31.3)	233 (32.6)	-0.02

(B)

Variable	Apulia			Lombardy		
	GLP1-RA (444)	Insulin (444)	Standardized differences	GLP1-RA (758)	Insulin (758)	Standardized differences
Mean age, mean± SD	68.1 ± 8.3	69.1 ± 8.9	-0.12	69.5 ± 8.4	69.7 ± 9.2	-0.01
Age categories, n (%)						
50-59 yr	71 (15.99)	63 (14.19)	0.06	98 (12.93)	103 (13.59)	0.01
60-64 yr	83 (18.69)	82 (18.47)		126 (16.62)	142 (18.73)	
65-69 yr	101 (22.75)	97 (21.85)		146 (19.26)	150 (19.79)	
70-74 yr	90 (20.27)	97 (21.85)		160 (21.11)	156 (20.58)	
75-79 yr	60 (13.51)	58 (13.06)		129 (17.02)	109 (14.38)	
80+	39 (8.78)	47 (10.59)		99 (13.06)	98 (12.93)	
Female, n (%)	194 (43.7)	176 (39.6)	0.08	288 (37.9)	250 (33.1)	0.09
Comorbidities, n (%)						
Cerebrovascular disease	67 (15.1)	90 (20.3)	-0.13	79 (10.4)	96 (12.6)	-0.07
-Stroke	14 (3.2)	22 (5.0)	-0.09	20 (2.6)	24 (3.2)	-0.03
Ischemic heart disease						
-Myocardial infarction	104 (23.4)	102 (23.0)	0.01	155 (20.4)	168 (22.0)	-0.04
-Other coronary disease	190 (42.8)	205 (46.2)	-0.07	339 (44.7)	314 (41.4)	0.06
Atrial fibrillation	125 (28.2)	121 (27.3)	0.02	232 (30.6)	245 (32.3)	-0.03
Peripheral vascular disease	110 (24.8)	83 (18.7)	0.15	95 (12.5)	130 (17.1)	-0.11
Lower limb complication	21 (4.7)	8 (1.8)	0.16	27 (3.5)	41 (5.4)	-0.08
Pulmonary embolism	4 (0.9)	4 (0.9)	0.00	7 (0.9)	10 (1.3)	-0.03
Renal failure	94 (21.2)	93 (21.0)	0.01	118 (15.6)	176 (23.2)	-0.19
Neuropathy	24 (5.1)	7 (1.6)	0.21	34 (4.5)	20 (2.6)	0.09
Diabetic retinopathy	0 (0.0)	3 (0.7)	-0.11	1 (0.1)	4 (0.5)	-0.06
Chronic obstructive pulmonary disease	136 (30.6)	142 (32.0)	-0.03	185 (24.4)	154 (20.3)	0.09
Cancer	50 (11.3)	35 (7.9)	0.11	81 (10.7)	80 (10.5)	0.00
Cardiovascular interventions, n (%)						
Percutaneous coronary intervention/ Coronary artery by-pass/ Other revascularizations	47 (10.6)	58 (13.1)	-0.07	122 (16.1)	127 (16.7)	-0.02
Heart valve replacement/ Annuloplasty/Valvuloplasty	15 (3.4)	18 (4.1)	-0.03	42 (5.5)	50 (6.5)	-0.04
Device therapy, n (%)						
Ventricular assist device	2 (0.5)	3 (0.7)	-0.03	1 (0.1)	2 (0.3)	-0.02
Implantable cardioverter defibrillator	28 (6.3)	51 (11.5)	-0.18	74 (9.7)	68 (9.0)	0.02
Cardiac resynchronization therapy	17 (3.8)	15 (3.4)	0.02	33 (4.3)	45 (5.9)	-0.07
Pacemaker implantation	25 (5.6)	23 (5.2)	0.02	47 (6.2)	55 (7.2)	-0.04
DDCI Index, median [IQR]	9 [7-10]	8 [7-10]		8 [7-10]	8 [7-10]	0.05
Number of hospital admissions, median [IQR]	4 [2-6]	4 [2-6]	0.08	4 [2-6]	4 [2-6]	-0.10

History of diabetes, n (%)						
0-4 yr	31 (7.0)	19 (4.3)	0.14	63 (8.3)	68 (9.0)	0.04
5-9 yr	142 (32.0)	131 (29.50)		188 (24.8)	199 (26.2)	
10+yr	271 (61.0)	294 (66.2)		507 (66.9)	491 (64.8)	
Median [Q1-Q3]	10 [8-10]	10 [9-10]	-0.01	10 [8-10]	10 [8-10]	0.12
Antihyperglycemic drugs						
GLP-1RA	0 (0.0)	5 (1.1)	-0.15	0 (0.0)	3 (0.4)	-0.08
SGLT-2i	0 (0.0)	0 (0.0)	0.00	0 (0.0)	0 (0.0)	0.00
Other-AHAs	432 (97.3)	441 (99.3)	-0.15	737 (97.2)	740 (97.6)	-0.02
Insulin	241 (54.3)	0 (0.0)	1.54	396 (52.2)	0 (0.0)	1.47
Metformin	416 (93.7)	407 (91.7)	0.08	691 (91.1)	660 (87.1)	0.12
Sulfonylureas	201 (45.3)	283 (63.7)	-0.37	486 (64.1)	547 (72.1)	-0.17
Glinides	180 (40.5)	197 (44.4)	-0.08	179 (23.4)	236 (31.1)	-0.17
Glitazones	113 (25.5)	79 (17.8)	0.18	196 (25.8)	104 (13.7)	0.30
Acarbose	35 (7.9)	38 (8.6)	-0.02	85 (11.1)	63 (8.3)	0.09
DDP4-inhibitors	148 (33.3)	111 (25.0)	0.18	233 (30.7)	184 (24.3)	0.14
None	0 (0.0)	3 (0.7)	0.11	2 (0.3)	18 (2.4)	0.18
Other medications of interest (in the previous 12 months)						
ACE-I/ARBs	377 (84.9)	369 (83.11)	0.05	644 (84.9)	609 (80.3)	0.12
Sacubitril-valsartan	0 (0.0)	0 (0.0)	0.00	5 (0.6)	3 (0.4)	0.03
Beta blockers	309 (69.6)	300 (67.6)	0.04	580 (76.5)	562 (74.1)	0.05
Diuretics	356 (80.2)	332 (74.77)	0.13	653 (86.1)	606 (79.9)	0.15
Mineralocorticoid receptor antagonists	157 (35.4)	170 (38.3)	-0.06	287 (37.8)	275 (36.3)	0.03
Antiarrhythmics	63 (14.2)	81 (18.2)	-0.11	120 (15.8)	135 (17.8)	-0.05
Digital drugs	41 (9.2)	65 (14.6)	-0.16	57 (7.5)	75 (9.9)	0.08
Ca-antagonists	122 (27.5)	137 (30.9)	-0.07	281 (37.0)	298 (39.3)	0.04
Nitrates	71 (16.0)	85 (19.1)	-0.08	177 (23.3)	178 (23.4)	0.00
Ivabradine	28 (6.3)	30 (6.8)	-0.02	55 (7.2)	58 (7.6)	0.01
Lipid lowering drugs	362 (81.5)	314 (70.7)	0.25	586 (77.3)	492 (64.9)	0.27
Antiplatelet drugs	308 (69.4)	326 (73.4)	-0.08	496 (65.4)	466 (61.5)	0.08
Anticoagulant drugs	130 (29.3)	122 (27.5)	0.04	250 (33.1)	227 (32.6)	0.06

(C)

Variable	Apulia			Lombardy		
	Insulin (5009)	Other_AHAs (5009)	Standardized differences	Other-AHAs (7043)	Insulin (7043)	Standardized differences
Mean age , mean± SD	77.6 ± 8.9	77.6 ± 8.5	0.00	78.8 ± 8.7	78.7 ± 8.5	0.01
Age categories, n (%)						
50-59 yr	186 (3.71)	132 (2.64)	-0.07	171 (2.58)	182 (2.58)	0.06
60-64 yr	267 (5.33)	253 (5.05)		295 (4.19)	315 (4.47)	
65-69 yr	483 (9.64)	498 (9.94)		529 (7.51)	529 (7.95)	
70-74 yr	705 (14.07)	767 (15.31)		981 (13.93)	981 (13.80)	
75-79 yr	1052 (21.00)	1076 (21.48)		1460 (20.73)	1460 (20.64)	
80+	2316 (46.24)	2283 (45.58)		3607 (51.21)	3607 (50.55)	
Female), n (%)	2568 (51.3)	2536 (50.6)	0.01	3220 (45.7)	3147 (44.7)	0.02
Comorbidities, , n (%)						
Cerebrovascular disease	1160 (23.2)	1249 (25.0)	-0.04	1201 (17.1)	1293 (18.4)	-0.03
-Stroke	251 (5.0)	238 (4.8)	0.01	273 (3.8)	321 (4.5)	0.00
Ischemic heart disease						
-Myocardial infarction	1099 (21.9)	1124 (22.4)	-0.01	1685 (23.9)	1684 (23.9)	-0.00
-Other coronary disease	2042 (40.8)	2211 (44.1)	-0.07	2801 (39.7)	2730 (38.7)	-0.00
Atrial fibrillation	1851 (37.0)	1890 (37.7)	-0.02	2735 (38.8)	2737 (38.8)	-0.00
Peripheral vascular disease	902 (18.0)	961 (19.2)	-0.03	874 (12.4)	1030 (14.6)	-0.06
Lower limb complication	99 (2.0)	114 (2.3)	-0.02	241 (3.4)	270 (3.8)	-0.02
Pulmonary embolism	36 (0.7)	31 (0.6)	0.01	99 (1.4)	120 (1.7)	-0.02
Renal failure	1531 (30.6)	1259 (25.1)	0.12	1542 (21.9)	1892 (26.8)	-0.11
Neuropathy	130 (2.6)	216 (4.3)	-0.09	279 (3.9)	224 (3.2)	0.04
Diabetic retinopathy	12 (0.2)	30 (0.6)	-0.05	22 (0.3)	22 (0.3)	0.00
Chronic obstructive pulmonary disease	2013 (40.2)	2035 (40.6)	-0.01	1472 (20.9)	1517 (21.5)	-0.01
Cancer	819 (16.4)	872 (17.4)	-0.03	1187 (16.8)	1171 (16.6)	0.00
DDCI Index, median [Q1-Q3]	9 (7-11)	9 (7-11)	0.01	8 [7,10]	8 [6,10]	0.03
Number of hospital admissions, median [Q1-Q3]	4 (2-6)	4 (2-7)	-0.06	4 [2,6]	4 [2,6]	-0.01
History of diabetes, n (%)						
0-4 yr	856 (17.1)	916 (18.3)	0.04	906 (12.8)	947 (13.4)	0.15
5-9 yr	2289 (45.7)	2195 (43.8)		1930 (27.4)	1887 (26.6)	
10+yr	1864 (37.2)	1898 (37.9)		4207 (60.0)	4219 (60.0)	
Median [Q1-Q3]	9 6-10	9 6-10	0.07	10 7-10	10 7-10	0.05
Cardiovascular interventions, n (%)						
Percutaneous coronary intervention/ Coronary artery by-pass/ Other revascularizations	535 (10.7)	542 (10.8)	-0.00	963 (13.7)	967 (13.7)	-0.00
Heart valve replacement/ Annuloplasty/Valvuloplasty	165 (3.3)	152 (3.0)	0.01	400 (5.7)	341 (4.8)	0.03
Device therapy, n (%)						

Ventricular assist device	4 (0.1)	1 (0.02)	0.02	2 (0.0)	2 (0.0)	0.00
Implantable cardioverter defibrillator	382 (7.6)	370 (7.4)	0.01	402 (5.7)	436 (6.2)	-0.02
Cardiac resynchronization therapy	98 (2.0)	106 (2.1)	-0.01	260 (3.7)	258 (3.6)	0.01
Pacemaker implantation	373 (7.5)	432 (8.6)	-0.04	751 (10.6)	641 (9.1)	0.05
Antihyperglycemic drugs						
GLP-1RA	15 (0.3)	17 (0.3)	-0.01	17 (0.2)	17 (0.2)	0.00
SGLT-2i	0 (0.0)	0 (0.0)	0.00	0 (0.0)	0 (0.0)	0.00
Other AHAs	4850 (96.8)	4166 (83.2)	0.46	5999 (85.2)	6792 (96.4)	-0.39
Insulin	0 (0.0)	1710 (34.1)	-1.02	0 (0.0)	1693 (24.0)	0.71
Metformin	4284 (85.5)	3401 (67.9)	0.42	4473 (63.5)	5744 (81.5)	-0.27
Sulfonylureas	3356 (67.0)	2491 (49.7)	0.35	3835 (54.4)	5329 (75.6)	-0.39
Glinides	2177 (43.5)	598 (11.9)	0.75	574 (8.1)	2538 (36.0)	-0.53
Glitazones	711 (14.2)	337 (6.7)	0.24	265 (3.7)	765 (10.8)	-0.20
Acarbose	351 (7.0)	2 (0.04)	0.38	5 (0.1)	517 (7.3)	0.39
DDP4-inhibitor	599 (12.0)	16 (0.3)	0.49	20 (0.3)	929 (13.2)	-0.53
None	159 (3.2)	487 (9.7)	0.27	599 (8.5)	251 (3.5)	-0.20
Other medications of interest (in the previous 12 months)						
ACE-I/ARBs	4047 (80.8)	4187 (83.6)	-0.07	5609 (79.6)	5647 (80.2)	-0.01
Sacubitril-valsartan	0 (0.0)	0 (0.0)	0.00	8 (0.1)	8 (0.1)	0.00
Beta blockers	2773 (55.4)	2860 (57.1)	-0.03	4524 (64.2)	4578 (65.0)	-0.01
Diuretics	4079 (81.4)	4068 (81.2)	0.01	5852 (83.1)	5765 (81.8)	0.03
Mineralocorticoid receptor antagonists	1857 (37.1)	1662 (33.2)	0.08	2294 (32.6)	2322 (33.0)	-0.01
Antiarrhythmics	909 (18.2)	854 (17.1)	0.03	1276 (18.1)	1198 (17.0)	0.02
Digital drugs	1180 (23.6)	1121 (22.4)	0.03	1034 (14.6)	1016 (14.8)	-0.01
Ca-antagonists	1670 (33.3)	1658 (33.1)	0.01	2658 (37.7)	2732 (38.8)	-0.02
Nitrates	1307 (26.1)	1420 (28.4)	-0.05	2458 (34.9)	2356 (33.4)	0.03
Ivabradine	192 (3.8)	185 (3.7)	0.01	252 (3.6)	267 (3.8)	-0.01
Lipid lowering drugs	2982 (59.5)	3105 (62.0)	-0.05	3985 (56.6)	4017 (57.0)	-0.01
Antiplatelet drugs	3398 (67.8)	3512 (70.1)	-0.05	4368 (62.0)	4286 (60.8)	0.02
Anticoagulant drugs	1329 (26.5)	1344 (26.8)	-0.01	2427 (34.4)	2305 (32.7)	0.03

SUPPLEMENTARY REFERENCES

1. Robusto F, Lepore V, D'Ettorre A, et al. The Drug Derived Complexity Index (DDCI) Predicts Mortality, Unplanned Hospitalization and Hospital Readmissions at the Population Level. PLoS One 2016;11:e0149203.
2. Austin PC. Balance diagnostics for comparing the distribution of baseline covariates between treatment groups in propensity-score matched samples. Stat Med 2009;28:3083–3107.

SUPPLEMENTARY TABLES

Supplementary Table 1A. Sensitivity analysis. Hazard ratios (CI 95%) for clinical events in matched cohorts from the Apulia region

	SGLT-2i (414)	Insulin (414)		GLP-1RA (444)	Insulin (444)		Other-AHAs (5009)	Insulin (5009)	
	IR/100 person year n (%)	IR/100 person year n (%)	HR (CI 95%)	IR/100 person year n (%)	IR/100 person year n (%)	HR (CI 95%)	IR/100 person year n (%)	IR/100 person year n (%)	HR (CI 95%)
Death from any cause	15 (2.83)	113 (9.95)	0.24 (0.13-0.43)	62 (4.69)	113 (9.95)	0.44 (0.32-0.61)	2460 (13.73)	2849 (18.51)	0.78 (0.74-0.82)
First hospitalization for heart failure	45 (9.19)	107 (11.95)	0.68 (0.45-1.01)	76 (6.59)	107 (11.95)	1.00 (0.41-2.43)	1440 (9.77)	170 (1.12)	0.91 (0.85-0.98)
Renal failure	3 (0.57)	21 (1.95)	0.30 (0.08-1.08)	9 (0.69)	21 (1.95)	0.38 (0.19-0.74)	359 (2.10)	283 (1.91)	0.84 (0.73-0.97)
All Stroke	2 (0.38)	12 (1.08)	0.64 (0.10-4.05)	9 (0.69)	12 (1.08)	0.18 (0.04-0.75)	147 (0.83)	46 (0.30)	0.77 (0.61-0.96)
Myocardial infarction	8 (1.52)	25 (2.29)	0.53 (0.21-1.33)	16 (1.24)	25 (2.29)	0.60 (0.44-0.82)	264 (1.52)	1399 (11.40)	0.82 (0.69-0.97)
MACE3	25 (4.78)	118 (12.55)	0.32 (0.20-0.52)	73 (5.86)	118 (12.55)	0.43 (0.32-0.58)	2655 (15.46)	3048 (20.86)	0.78 (0.74-0.82)
MACE4	71 (14.87)	206 (25.11)	0.54 (0.40-0.73)	126 (11.42)	206 (25.11)	0.47 (0.37-0.59)	3211 (23.01)	3572 (31.01)	0.78 (0.75-0.82)
IR, crude incidence rate. HR adjustment for covariates with a standardized difference >10%: a) SGLT-2i vs insulin (cerebrovascular disease, stroke, other coronary disease, cardiovascular interventions, endovascular valve replacement or heart valve replacement /annuloplasty /valvuloplasty, lower limb complication, pulmonary embolism, renal failure, neuropathy, chronic obstructive pulmonary disease); b) GLP-1RA vs insulin (age classes (50-59, 60-64, 65-69, 70-74, 75-79, >80), cerebrovascular disease, myocardial infarction, implantable cardioverter defibrillator, peripheral artery disease, lower limb complication, diabetic neuropathy, diabetic retinopathy, cancer); c) other-AHAs vs insulin (renal disease). MACE, major adverse clinical event									

Supplementary Table 1B. Sensitivity analysis. Hazard ratios (CI 95%) for clinical events in matched cohorts from the Lombardy region

	SGLT-2i (715)	Insulin (715)		GLP-1RA (758)	Insulin (758)		Other-AHAs (7043)	Insulin (7043)	
	IR/100 person year n (%)	IR/100 person year n (%)	HR (CI 95%)	IR/100 person year n (%)	IR/100 person year n (%)	HR (CI 95%)	IR/100 person year n (%)	IR/100 person year n (%)	HR (CI 95%)
Death from any cause	52 (5.0)	154 (16.0)	0.37 (0.26-0.51)	166 (6.8)	294 (13.9)	0.50 (0.40-0.60)	4090 (19.4)	4395 (22.7)	0.87 (0.84-0.91)
First hospitalization for heart failure	76 (7.7)	138 (16.7)	0.51 (0.38-0.68)	182 (8.9)	226 (13.47)	0.72 (0.59-0.87)	2314 (13.7)	2392 (16.0)	0.89 (0.84-0.95)
Renal failure	1 (0.1)	32 (3.4)	-	24 (1.0)	57 (2.9)	0.45 (0.28-0.72)	310 (1.5)	427 (2.3)	0.75 (0.64-0.86)
All Stroke	4 (0.2)	8 (0.6)	0.50 (0.14-1.70)	8 (0.3)	13 (0.6)	0.55 (0.22-1.36)	166 (0.8)	179 (0.9)	0.85 (0.69-1.05)
Myocardial infarction	19 (1.9)	23 (2.0)	0.73 (0.39-1.38)	43 (1.9)	44 (2.1)	0.97 (0.63-1.48)	403 (2.0)	460 (2.45)	0.82 (0.72-0.92)
MACE3	59 (5.7)	142 (15.1)	0.44 (0.32-0.60)	181 (7.8)	291 (14.3)	0.57 (0.46-0.66)	3862 (18.9)	4009 (21.6)	0.89 (0.86-0.93)
MACE4	120 (12.6)	224 (27.8)	0.50 (0.40-0.64)	281 (14.9)	381 (23.6)	0.67 (0.57-0.77)	4447 (27.1)	4639 (32.5)	0.87 (0.83-0.90)
IR, crude incidence rate. HR adjustment for covariates with a standardized difference >10%: a) SGLT-2i vs insulin (age classes (50-59, 60-64, 65-69, 70-74, 75-79, >80); renal disease; neuropathy; pulmonary embolism), b) GLP-1RA vs insulin (renal disease; peripheral artery disease); c) other-AHAs vs insulin (renal disease). MACE, major adverse clinical event									

Supplementary Table 2. Sensitivity analysis: incidence rates (IRs) and hazard ratios (HRs) in subjects without history of renal disease in the 5 years before study entry in whole cohorts. (A) APULIA (9980), (B) LOMBARDY (15871).

	SGLT-2i (460)	Insulin (4826)	SGLT-2i vs Insulin	GLP-1RA (360)	Insulin (4826)	GLP-1RA vs Insulin	Other-AHAs (4334)	Insulin (4826)	Other-AHAs vs Insulin
Events	IRx100py	IRx100py	HR (95% CI)	IRx100py	IRx100py	HR (95% CI)	IRx100py	IRx100py	HR (95% CI)
Death from any cause	14 (2.55)	2447 (17.30)	0.23 (0.14-0.39)	44 (3.85)	2447 (17.30)	0.40 (0.29-0.54)	1945 (10.90)	2447 (17.30)	0.69 (0.65-0.73)
First hospitalization for heart failure	41 (7.97)	1215 (10.54)	0.65 (0.47-0.91)	59 (5.91)	1215 (10.54)	0.63 (0.48-0.82)	1170 (7.83)	1215 (10.54)	0.85 (0.78-0.92)
Renal failure	2 (0.36)	201 (1.46)	*	6 (0.56)	201 (1.46)	0.38 (0.17-0.87)	192 (1.10)	201 (1.46)	0.83 (0.68-1.02)
All stroke	2 (0.37)	138 (0.99)	0.47 (0.11-2.01)	7 (0.62)	138 (0.99)	0.89 (0.41-1.95)	125 (0.71)	138 (0.99)	0.82 (0.64-1.05)
Myocardial infarction	9 (1.66)	253 (1.85)	0.62 (0.31-1.28)	14 (1.26)	253 (1.85)	0.51 (0.24-1.08)	228 (1.32)	253 (1.85)	0.83 (0.69-1.00)
MACE3	25 (4.62)	2636 (19.54)	0.34 (0.23-0.51)	57 (5.17)	2636 (19.54)	0.44 (0.34-0.58)	2127 (12.34)	2636 (19.54)	0.70 (0.66-0.74)
MACE4	69 (13.77)	3169 (29.24)	0.55 (0.43-0.71)	99 (10.36)	3169 (29.24)	0.51 (0.42-0.63)	2630 (18.59)	3169 (29.24)	0.72 (0.68-0.76)

(A) APULIA. Multivariate analyses were adjusted for age classes (50-59, 60-64, 65-69, 70-74, 75-79, >80), sex, index year, myocardial infarction, stroke, atrial fibrillation, chronic obstructive pulmonary disease, cancer, diabetes history, DDCl index. *: HR (95% CI) was not included since SGLT-2is in years 2015-2018 were not indicated in patients with renal dysfunction.

	SGLT-2i (725)	Insulin (7982)	SGLT-2i vs Insulin	GLP-1RA (641)	Insulin (7982)	GLP-1RA vs Insulin	Other-AHAs (6433)	Insulin (7982)	Other-AHAs vs Insulin
Events	IRx100py	IRx100py	HR (95% CI)	IRx100py	IRx100py	HR (95% CI)	IRx100py	IRx100py	HR (95% CI)
Death from any cause	46 (4.42)	4483 (21.44)	0.27 (0.19-0.35)	139 (6.35)	4483 (21.44)	0.47 (0.40-0.56)	3603 (16.70)	4483 (20.82)	0.81 (0.78-0.85)
First hospitalization for heart failure	73 (7.56)	2396 (14.49)	0.50 (0.48-0.63)	153 (8.34)	2396 (14.49)	0.68 (0.57-0.81)	2011 (11.46)	2396 (14.49)	0.88 (0.83-0.93)
Renal failure*	-	-	*	15 (0.69)	207 (1.00)	0.56 (0.31-0.94)	145 (0.67)	207 (1.00)	0.76 (0.61-0.95)
All stroke	4 (0.38)	198 (0.95)	0.58 (0.17-1.44)	6 (0.27)	198 (0.95)	0.37 (0.14-0.78)	155 (0.72)	198 (0.95)	0.77 (0.62-0.96)
Myocardial infarction	17 (1.65)	455 (2.26)	0.80 (0.46-1.31)	38 (1.84)	455 (2.26)	1.09 (0.76-1.52)	361 (1.72)	455 (2.26)	0.85 (0.73-0.98)
MACE3	62 (6.05)	4703 (23.64)	0.32 (0.25-0.41)	167 (8.11)	4703 (23.64)	0.53 (0.45-0.62)	3765 (18.20)	4703 (23.64)	0.81 (0.77-0.85)
MACE4	121 (12.83)	5491 (34.83)	0.41 (0.34-0.50)	254 (14.99)	5491 (34.83)	0.61 (0.53-0.69)	4354 (25.80)	5491 (34.83)	0.80 (0.77-0.84)

(B) LOMBARDY. Multivariate analyses were adjusted for age classes (50-59, 60-64, 65-69, 70-74, 75-79, >80), sex, index year, myocardial infarction, stroke, atrial fibrillation, chronic obstructive pulmonary disease, cancer, diabetes history, DDCl index. *: HR (95% CI) was not included since SGLT-2is in years 2015-2018 were not indicated in patients with renal dysfunction.

Supplementary Table 3. Sensitivity analysis: incidence rates (IRs) and hazard ratios (HRs) in subjects without history of renal disease in the 5 years before study entry in propensity matched cohorts. (A) APULIA, (B) LOMBARDY.

	SGLT-2i (355)	Insulin (314)	SGLT-2i vs Insulin	GLP-1RA (350)	Insulin (351)	GLP-1RA vs Insulin	Other-AHAs (3750)	Insulin (3478)	Other-AHAs vs Insulin
Events	IRx100py	IRx100py	HR (95% CI)	IRx100py	IRx100py	HR (95% CI)	IRx100py	IRx100py	HR (95% CI)
Death from any cause	10 (2.14)	37 (9.69)	0.20 (0.10-0.40)	44 (3.88)	78 (8.28)	0.44 (0.30-0.66)	1714 (11.98)	1863 (16.38)	0.75 (0.70-0.80)
First hospitalization for heart failure	34 (7.81)	47 (14.41)	0.60 (0.38-0.93)	58 (5.85)	78 (10.21)	0.66 (0.46-0.93)	1026 (8.60)	930 (10.19)	0.87 (0.80-0.96)
Renal failure]	2 (0.43)	4 (1.05)	*	6 (0.54)	10 (1.09)	0.58 (0.18-1.83)	155 (1.11)	157 (1.43)	0.79 (0.64-0.99)
All stroke	2 (0.43)	1 (0.26)	1.39 (0.13-15.30)	7 (0.62)	9 (0.97)	1.16 (0.42-3.26)	106 (0.75)	119 (1.06)	0.72 (0.55-0.93)
Myocardial infarction	8 (1.73)	11 (2.92)	0.56 (0.22-1.41)	14 (1.27)	18 (1.95)	0.51 (0.24-1.08)	194 (1.39)	203 (1.85)	0.77 (0.63-0.93)
MACE3	20 (4.35)	47 (12.51)	0.35 (0.21-0.59)	57 (5.20)	95 (10.47)	0.51 (0.36-0.70)	1861 (13.53)	2016 (18.66)	0.74 (0.70-0.79)
MACE4	57 (13.47)	86 (26.61)	0.52 (0.37-0.73)	98 (10.33)	151 (21.51)	0.52 (0.40-0.67)	2295 (20.30)	2413 (28.25)	0.74 (0.70-0.79)

(A) APULIA. HR adjustment for covariates with a standardized difference >10%: a) SGLT-2i vs insulin (cerebrovascular disease, stroke, other coronary disease, cardiovascular interventions, endovascular valve replacement or heart valve replacement /annuloplasty /valvuloplasty, lower limb complication, pulmonary embolism, renal failure, neuropathy, chronic obstructive pulmonary disease); b) GLP-1RA vs insulin (age classes (50-59, 60-64, 65-69, 70-74, 75-79, >80), cerebrovascular disease, myocardial infarction, implantable cardioverter defibrillator, peripheral artery disease, lower limb complication, diabetic neuropathy, diabetic retinopathy, cancer); c) other-AHAs vs insulin (renal disease). MACE, major adverse clinical event. *: HR (95% CI) was not included since SGLT-2is in years 2015-2018 were not indicated in patients with renal dysfunction.

	SGLT-2i (658)	Insulin (532)	SGLT-2i vs Insulin	GLP-1RA (640)	Insulin (582)	GLP-1RA vs Insulin	Other-AHAs (5501)	Insulin (5151)	Other-AHAs vs Insulin
Events	SGLT-2i IRx100py	Insulin IRx100py	HR (95% CI)	GLP-1RA IRx100py	Insulin IRx100py	HR (95% CI)	Other-A IRx100py	Insulin IRx100py	HR (95% CI)
Death from any cause	44 (4.44)	107 (14.31)	0.32 (0.22-0.46)	139 (6.35)	218 (12.95)	0.48 (0.38-0.59)	3027 (17.58)	3097 (21.03)	0.84 (0.80-0.88)
First hospitalization for heart failure	72 (7.87)	94 (14.47)	0.54 (0.40-0.74)	153 (8.34)	157 (11.25)	0.75 (0.60-0.93)	1696 (12.12)	1643 (14.27)	0.87 (0.81-0.94)
Renal failure	-	-	-	15 (0.69)	21 (1.27)	0.54 (0.28-1.06)	134 (0.78)	160 (1.11)	0.71 (0.56-0.89)
All stroke	4 (0.40)	7 (0.97)	0.46 (0.13-1.58)	6 (0.27)	10 (0.60)	0.43 (0.15-1.19)	124 (0.72)	146 (1.00)	0.73 (0.57-0.93)
Myocardial infarction	16 (1.63)	19 (2.60)	0.61 (0.31-1.19)	38 (1.84)	28 (1.78)	1.13 (0.70-1.85)	305 (1.82)	304 (2.15)	0.86 (0.74-1.00)
MACE3	59 (6.05)	125 (17.26)	0.36 (0.26-0.48)	167 (8.12)	241 (15.04)	0.53 (0.44-0.64)	3164 (19.16)	3238 (23.17)	0.83 (0.79-0.87)
MACE4	118 (13.20)	183 (28.83)	0.47 (0.37-0.59)	254 (14.99)	306 (22.86)	0.64 (0.54-0.76)	3665 (27.22)	3742 (34.21)	0.81 (0.77-0.85)

(B) LOMBARDY. HR adjustment for covariates with a standardized difference >10%: a) SGLT-2i vs insulin (age classes (50-59, 60-64, 65-69, 70-74, 75-79, >80); renal disease; neuropathy; pulmonary embolism), b) GLP-1RA vs insulin (renal disease; peripheral artery disease); c) other-AHAs vs insulin (renal disease). MACE, major adverse clinical event.

Supplementary Table 4A. Frequency of antihyperglycemic drugs prescribed in 12 months before entering the study

	Apulia				Lombardy			
	SGLT-2i (531)	GLP-1RA (459)	Insulin (7027)	Other-AHAs (5704)	SGLT-2i (786)	GLP-1RA (759)	Insulin (10 950)	Other-AHAs (8159)
Insulin	345 (65.0)	226 (49.2)	0 (0.0)	1546 (27.1)	521 (66.3)	343 (45.2)	0 (0.0)	1387 (17.0)
Metformin	399 (75.1)	362 (78.9)	4985 (70.9)	3101 (54.4)	508 (64.6)	543 (71.5)	7112 (65.0)	3910 (47.9)
Sulfonylureas	106 (20.0)	127 (27.6)	3231 (46.0)	1887 (33.1)	230 (29.3)	328 (43.2)	6343 (57.9)	3048 (37.4)
DPP4-i	114 (21.5)	131 (28.5)	2760 (39.3)	455 (8.0)	122 (15.5)	182 (24.0)	1591 (14.5)	15 (0.2)
Glinides	106 (20.0)	120 (26.1)	852 (12.1)	10 (0.2)	67 (8.5)	112 (14.8)	3403 (31.1)	418 (5.1)
Glitazones	33 (6.2)	49 (10.7)	521 (7.4)	159 (2.8)	48 (6.1)	85 (11.2)	687 (6.3)	112 (1.4)
Acarbose	23 (4.3)	21 (4.6)	378 (5.4)	1 (0.0)	31 (3.9)	53 (7.0)	722 (6.6)	3 (0.0)
GLP-1RA	5 (0.9)	0 (0.0)	11 (0.2)	11 (0.2)	4 (0.5)	0 (0.0)	19 (0.2)	7 (0.1)
SGLT-2i	0 (0.0)	0 (0.0)	0 (0.0)	0 (0.0)	0 (0.0)	0 (0.0)	0 (0.0)	0 (0.0)

Supplementary Table 4B. Frequency of antihyperglycemic drugs prescribed in the 12 months after entering the study (sum: pts who continued + pts who added-on antihyperglycemic drugs)

	Apulia				Lombardy			
	SGLT-2i (531)	GLP-1 RA (459)	Insulin (7027)	Other-AHAs (5704)	SGLT-2i (786)	GLP-1 RA (759)	Insulin (10 950)	Other-AHAs (8159)
Insulin	352 (66.3)	206 (44.9)	7027 (100.0)	1539 (27.0)	548 (69.7)	345 (45.5)	10 950 (100.0)	1284 (15.7)
Metformin	405 (76.3)	335 (73.0)	2104 (29.9)	3129 (54.9)	525 (66.8)	481 (63.4)	2402 (21.9)	3768 (46.2)
Sulfonylureas	47 (8.9)	96 (20.9)	917 (13.1)	1251 (21.3)	104 (13.2)	254 (33.5)	1924 (17.6)	2363 (29.0)
DPP4-i	34 (6.4)	37 (8.1)	693 (9.9)	1149 (20.1)	51 (6.5)	55 (7.3)	1182 (10.8)	1521 (18.6)
Glinides	54 (10.2)	99 (21.6)	1871 (26.6)	2911 (51.0)	30 (3.8)	73 (9.6)	2020 (18.5)	3742 (45.9)
Glitazones	8 (1.5)	19 (4.1)	137 (2.0)	377 (6.6)	18 (2.3)	40 (5.3)	119 (1.1)	299 (3.7)
Acarbose	19 (3.6)	18 (3.9)	286 (4.1)	773 (13.6)	25 (3.2)	46 (6.1)	491 (4.5)	1046 (12.8)
GLP-1 RA	16 (3.0)	459 (100.0)	3 (0.04)	8 (0.1)	23 (2.9)	759 (100.0)	6 (0.05)	3 (0.04)
SGLT-2i	531 (100.0)	7 (1.5)	0 (0.0)	0 (0.0)	786 (100.0)	11 (1.5)	0 (0.0)	0 (0.0)

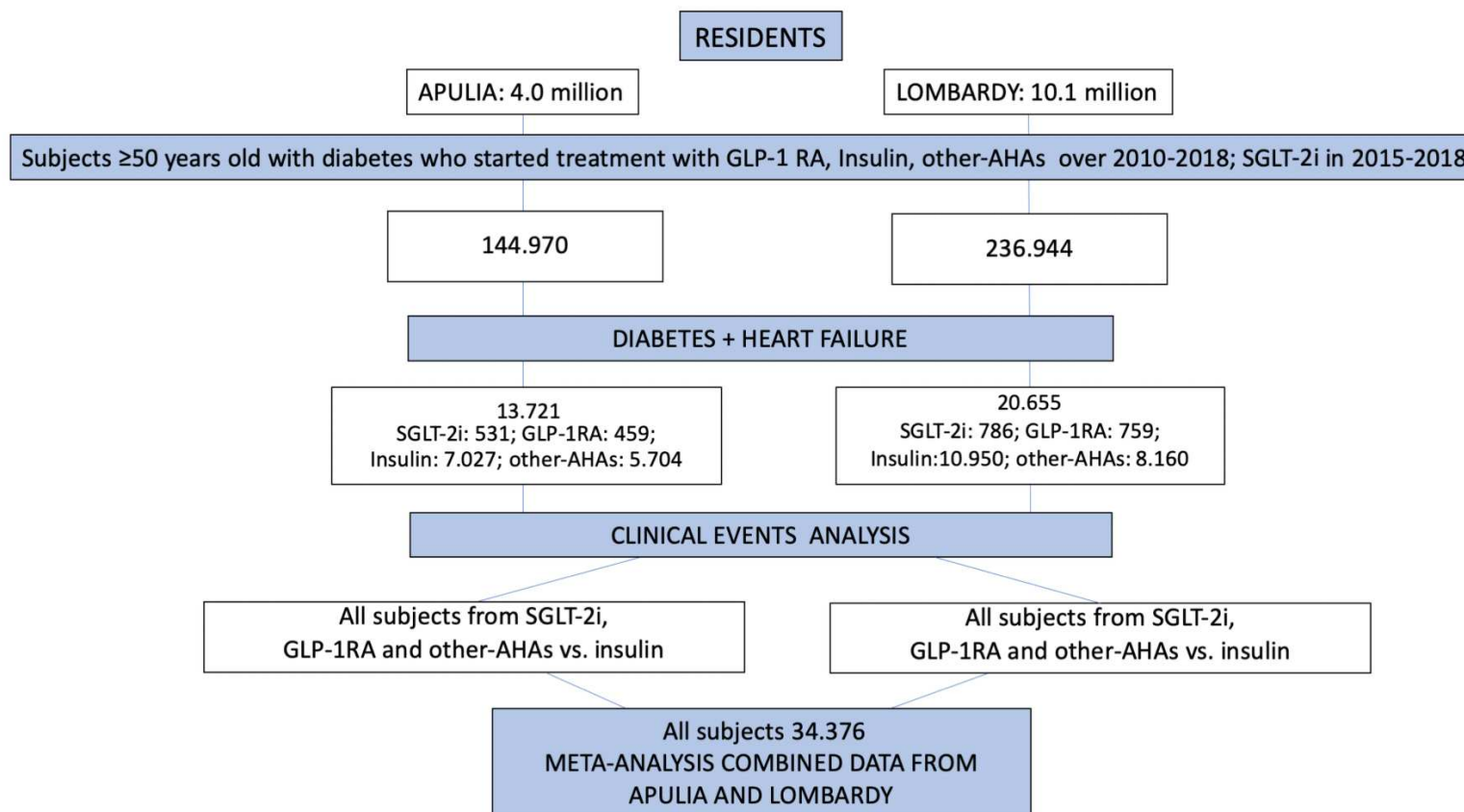
Supplementary Table 5. Insulin defined daily doses three years after starting treatment with SGLT-2i or GLP-1RA in Apulia region

	Insulin DDD				
	Reduced	Maintained	Increased	Total patients	Chi ² test*
	<i>n</i> (%)	<i>n</i> (%)	<i>n</i> (%)	<i>n</i>	<i>p value</i>
SGLT-2i	124 (51.0)	26 (10.7)	93 (38.3)	243	<0.001
GLP-1RA	120 (62.5)	16 (8.3)	56 (29.2)	192	0.75
TOTAL, ^	244 (56.1)	42 (9.7)	149 (34.2)	435	0.01
* Chi ² test: Reduced vs. Maintained +Increased. DDD, defined daily dose					

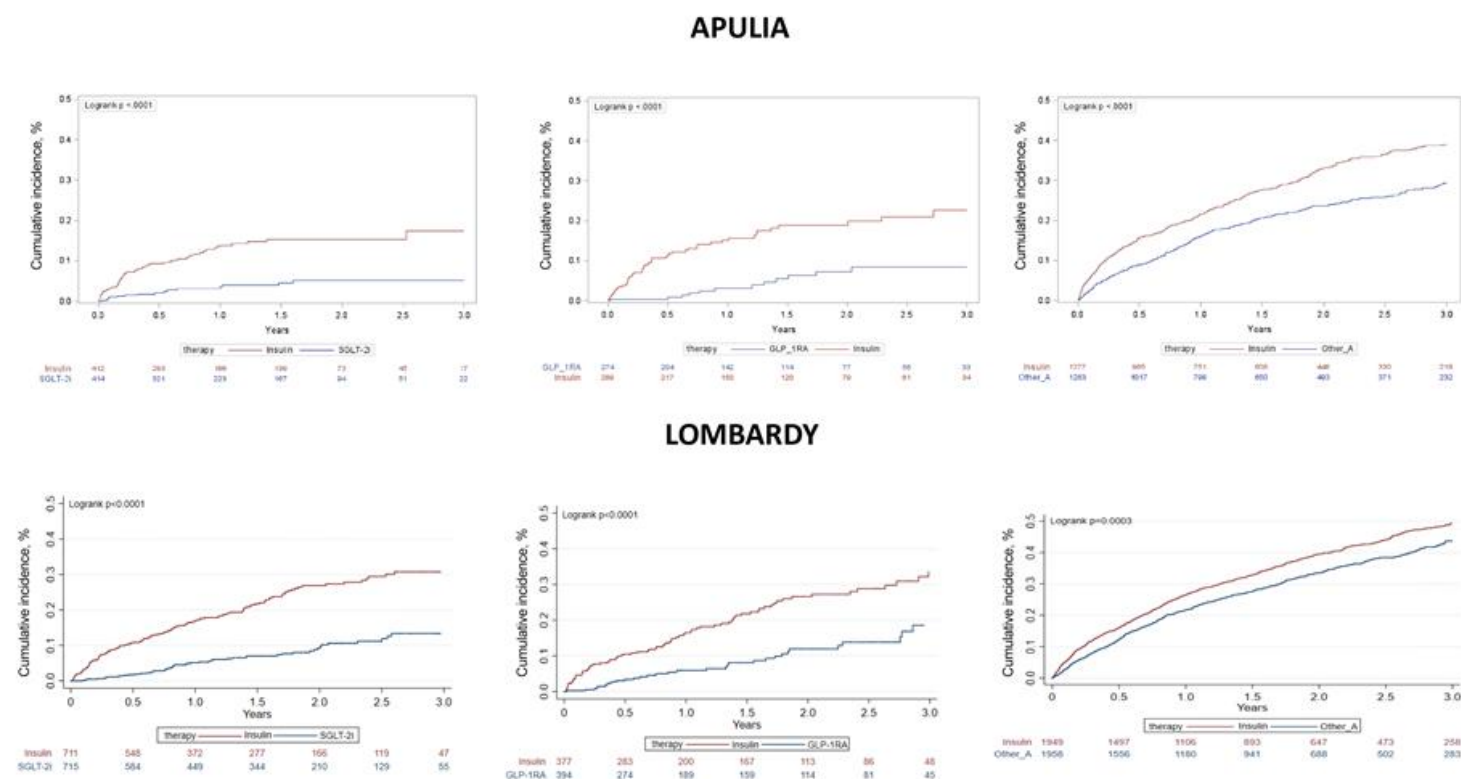
Supplementary Table 6. Insulin defined daily dose reduction in alive patients during three years of follow-up. Cardiovascular events and renal failure incidence rate ratio three-years pre and three-years post SGLT-2i or GLP-1RA treatment initiation, in Apulia region.

Events	SGLT-2i (n= 124)			GLP-1RA (n= 120)		
	PRE	POST	IRR (CI 95%)	PRE	POST	IRR (CI 95%)
	IRx100 p/y n (%)	IRx100 p/y n (%)		IRx100 p/y n (%)	IRx100 p/y n (%)	
Heart Failure	74 (5.5)	26 (2.9)	0.53 (0.34-0.82)	85 (6.5)	57 (3.5)	0.54 (0.38-0.75)
Renal failure	3 (0.2)	3 (0.4)	1.50 (0.30-7.43)	3 (0.2)	7 (0.4)	1.87 (0.48-7.23)
Stroke	3 (0.2)	3 (0.4)	1.50 (0.30-7.43)	0	14 (0.9)	/
Myocardial infarction	30 (2.2)	2 (0.3)	0.10 (0.02-0.42)	34 (2.6)	9 (0.6)	0.21 (0.10-0.44)
PRE, three-years pre SGLT-2i or GLP-1RA treatment start; POST, three-years post SGLT-2i or GLP-1RA treatment initiation; IRR, incidence rate ratio.						

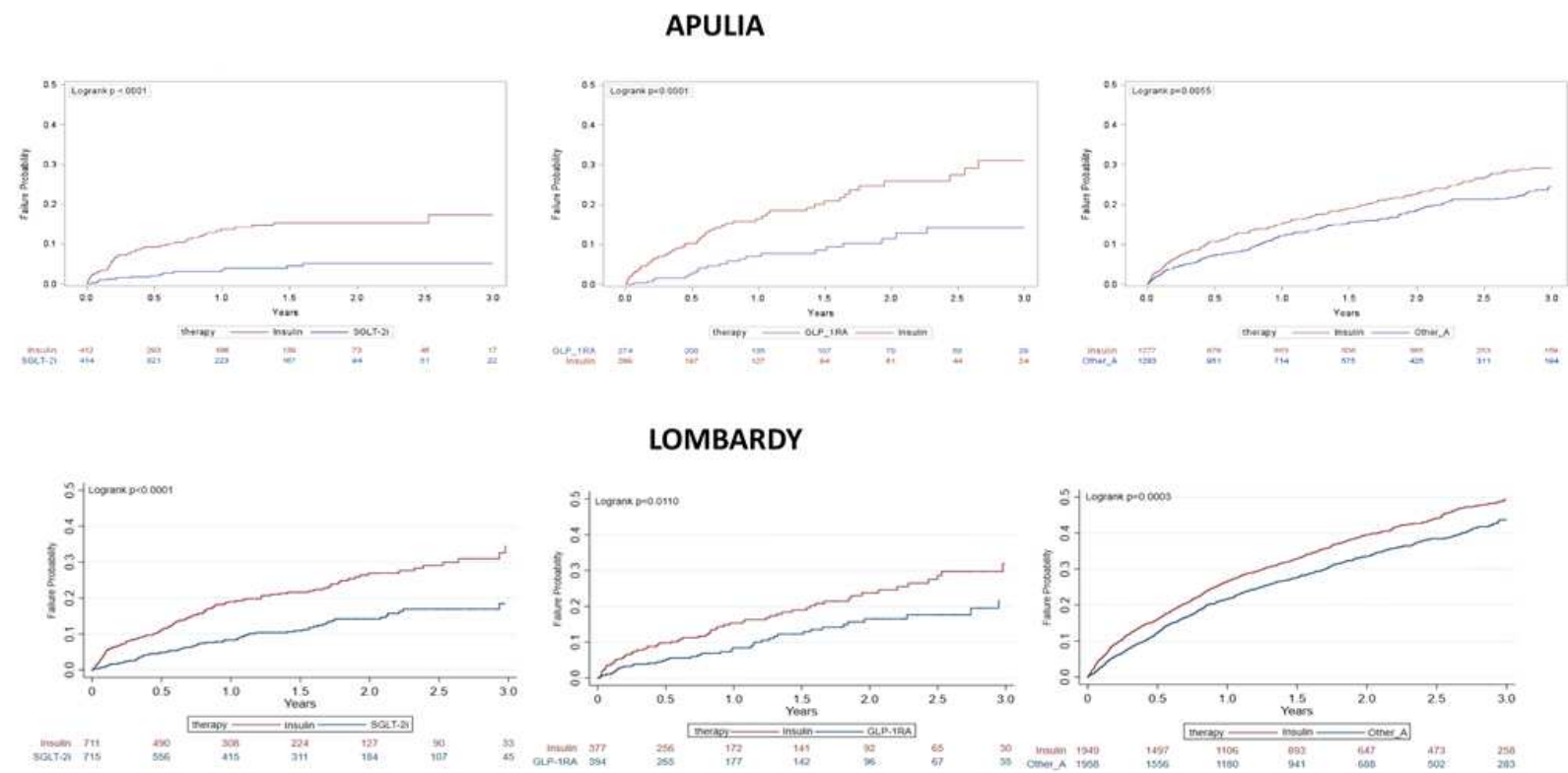
Supplementary Figure 1. Study diagram

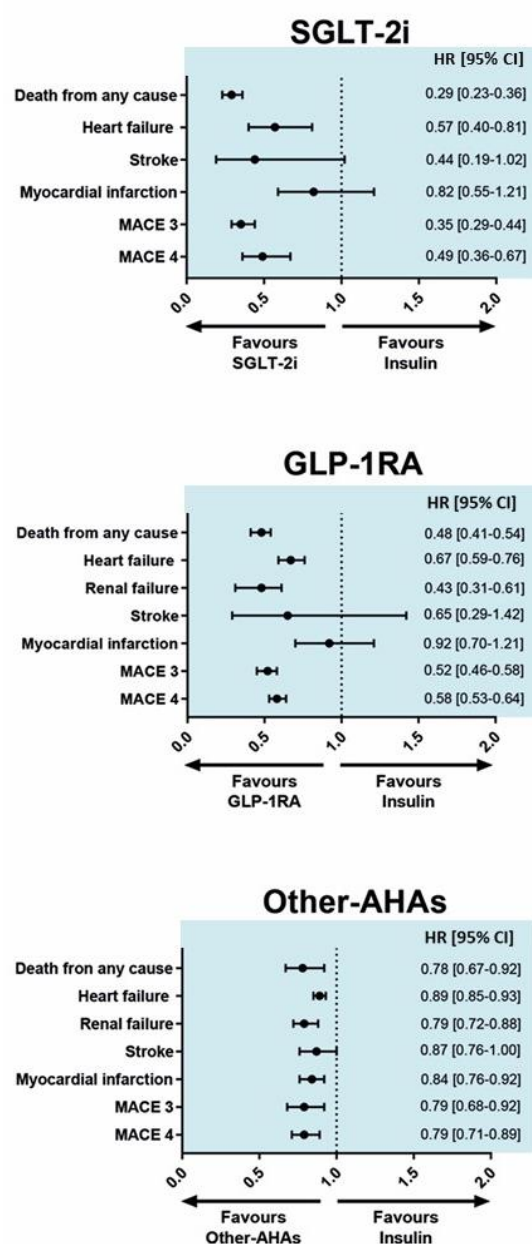


Supplementary Figure 2. Kaplan-Meier curves of incidence of death from any cause, for the comparison of SGLT-2i, GLP1-RA and other-AHAs with insulin in propensity matched cohorts of subjects treated in the frame time 2015-2018 in Apulia and Lombardy.



Supplementary Figure 3. Kaplan-Meier curves of incidence of first hospitalization for heart failure, for the comparison of SGLT-2i, GLP1-RA and other-AHAs with insulin in propensity matched cohorts of subjects treated in the frame time 2015-2018 in Apulia and Lombardy.





Supplementary Figure 4. Meta-analysis from combined data from Apulia and Lombardy regions (34,376 subjects) comparing the effects of SGLT-2i, GLP-1RA and Other-AHAs with insulin treatment, on the selected outcomes.

Age classes (50-59, 60-64, 65-69, 70-74, 75-79, >80), sex, index year, myocardial infarction, ischemic or haemorrhagic stroke, atrial fibrillation, chronic obstructive pulmonary disease, cancer, renal disease, diabetes history, DDCl index were considered as confounding variables. Plotted points are the pooled Apulia, Lombardy region HR for each outcome and the horizontal lines represent the 95% CIs. HR, hazard ratio.

Supplementary Figure 5

Frequency of insulin treatment in the SGLT-2i, GLP1-RA and other-AHA cohorts, 12 months before study entry, those who started in the 12 months after study entry and those who continued insulin for 12 months more.

