

Sitagliptin versus mitiglinide switched from mealtime dosing of a rapid-acting insulin analog in patients with type 2 diabetes: a randomized, parallel-group study

Yumie Takeshita,¹ Toshinari Takamura,² Yuki Kita,¹ Akiko Takazakura,¹ Ken-ichiro Kato,¹ Yuki Isobe,¹ Shuichi Kaneko¹

To cite: Takeshita Y, Takamura T, Kita Y, *et al*. Sitagliptin versus mitiglinide switched from mealtime dosing of a rapid-acting insulin analog in patients with type 2 diabetes: a randomized, parallel-group study. *BMJ Open Diabetes Research and Care* 2015;**3**: e000122. doi:10.1136/bmjdr-2015-000122

► Additional material is available. To view please visit the journal (<http://dx.doi.org/10.1136/bmjdr-2015-000122>).

YT and TT contributed equally.

Received 9 June 2015
Revised 14 July 2015
Accepted 20 July 2015



CrossMark

¹Department of Disease Control and Homeostasis, Kanazawa University Graduate School of Medical Sciences, Kanazawa, Ishikawa, Japan
²Department of Comprehensive Metabolism, Kanazawa University Graduate School of Medical Sciences, Kanazawa, Ishikawa, Japan

Correspondence to

Dr Toshinari Takamura;
ttakamura@m-kanazawa.jp

ABSTRACT

Purpose: We determined the feasibility of substituting sitagliptin or mitiglinide for bolus insulin injection therapy in patients with type 2 diabetes.

Methods: 60 patients with type 2 diabetes were enrolled and randomized to switch from mealtime dosing of a rapid-acting insulin analog to either sitagliptin or mitiglinide for 16 weeks.

Results: Body weight, body mass index, and waist circumference decreased significantly in both groups at the end of the study. Mitiglinide significantly increased fasting plasma glucose (FPG) levels at the end of the study from 146.5±36.3 to 168.0±38.8 mg/dL, whereas sitagliptin did not affect FPG. Glycated hemoglobin (HbA1c) and 1,5-anhydroglucitol increased significantly in both groups. The C peptide immunoreactivity (CPR) responses after arginine were diminished in both groups. γ -GTP and triglycerides increased, and high-density lipoprotein cholesterol and adiponectin decreased, in the sitagliptin group, but not in the mitiglinide group. Mean Diabetes Treatment Satisfaction Questionnaire scores improved significantly in both groups. Patients whose mean total daily doses of rapid-acting insulin analog were 16.6 and 17.8 units were switched to sitagliptin and mitiglinide, respectively, without a change in the HbA1c level. Total insulin doses/body weight predicted changes in HbA1c only in the sitagliptin group, but not in the mitiglinide group. Use of >0.27 IU/kg of a rapid-acting insulin analog predicted an increase in HbA1c after switching to sitagliptin. The CPR index (CPI) was also a predictor for a change in HbA1c in the sitagliptin group, but not in the mitiglinide group; patients with a CPI<1.4 developed a worse HbA1c after switching to sitagliptin.

Conclusions: Sitagliptin may predominantly act on FPG, whereas mitiglinide may act on postprandial plasma glucose to achieve glycemic control after switching from a bolus insulin regimen. Additional therapy to sitagliptin or mitiglinide is clearly required to obtain equivalent glycemic control in patients using a higher dose of insulin.

Trial registration number: (UMIN 00007051)

Key messages

- This is the first report showing the feasibility of substituting oral hypoglycemic agents for insulin injection therapy in an open-label randomized, parallel-group study. The predictive variable for a change in glycated hemoglobin (HbA1c) was total insulin dose before switching.
- Patients whose mean total daily doses of rapid-acting insulin analog were 16.6 and 17.8 units were switched to sitagliptin and mitiglinide, respectively, without a change in the HbA1c level. Use of >0.27 IU/kg of a rapid-acting insulin analog predicted an increase in HbA1c after switching to sitagliptin.
- Sitagliptin, but not mitiglinide, may exert unique pleiotropic effects on fatty acid composition. After the switch from insulin, sitagliptin significantly decreased the $\Delta 5$ desaturase, whereas it significantly increased the $\Delta 6$ desaturase.
- Patients with a C peptide immunoreactivity index (CPI) <1.4 had worse HbA1c levels after switching to sitagliptin. Our study is the first to prospectively demonstrate the usefulness of the CPI for “tailor-made” diabetic medicine.

INTRODUCTION

As the population with diabetes increases, the number of individuals receiving insulin injections increases proportionally. Rapid-acting insulin analogs have been particularly effective at targeting postprandial hyperglycemia as well as nadir fasting plasma glucose (FPG).^{1–3} In contrast, excess insulin/insulin-like growth factor signaling accelerates cellular aging by negatively regulating FOXO transcription factors.⁴ Aging phenotypes include cancer and dementia. The risk for liver cancer increases particularly in patients with diabetes undergoing insulin treatment.^{5–7} Several studies have identified hyperinsulinemia as a risk factor for

accelerated cognitive decline and dementia.^{8–10} Indeed, the risk of dementia is highest in patients with diabetes treated with insulin.^{11–13} Insulin injection therapy is also associated with pain and places a heavy physical, mental, and financial burden on patients. Similarly, recent large-scale clinical trials have suggested that intensive antidiabetic therapies that cause unnecessary hyperinsulinemia do not result in satisfactory cardiovascular outcomes in patients with type 2 diabetes and may cause hypoglycemia and weight gain.¹⁴

One possible solution for this paradox came from the launch of incretin-based agents because they avoid unnecessary hyperinsulinemia and thereby avoid hypoglycemia and weight gain. Sitagliptin and mitiglinide are major agents for switching from insulin injections. Sitagliptin increases insulin secretion and decreases glucagon concentration in a glucose-dependent manner.¹⁵ Its use results in a lower incidence of hypoglycemia compared with that of other oral hypoglycemic agents (OHAs).^{16–17} However, mitiglinide provokes rapid and short-acting insulin secretion that improves postprandial hyperglycemia and mimics normal physiological insulin secretion and glucose metabolism in healthy individuals. Owing to its shorter duration of action, mitiglinide has a lower risk of hypoglycemia compared with other insulin secretagogues.¹⁸

From the perspective of switching from insulin treatment to an OHA, it is prudent to carefully consider the inclusion criteria. This approach may improve blood sugar control in patients with diabetes and help reduce the overall cost of medical care. Additionally, it remains unclear what clinical features of patients, including diabetes duration, dose of insulin, insulin secretory capacity, body composition, and fatty acid composition, are associated with changes in glycated hemoglobin (HbA1c) after switching from a bolus insulin regimen to an OHA. For these reasons, we determined the feasibility of substituting an OHA for insulin injection therapy in patients with type 2 diabetes.

METHODS

Overview

This was a randomized, parallel-group study conducted on Japanese patients. This study was designed in accordance with the principles stated in the Declaration of Helsinki, and the protocol was reviewed and approved by the Ethics Committee of Kanazawa University Hospital, Ishikawa, Japan. Patients provided written informed consent before participation.

Sixty patients with type 2 diabetes and on rapid-acting insulin injection therapy were recruited from our Department of Disease Control and Homeostasis from May 2010 to July 2011. This trial is registered with the University Hospital Medical Information Network Clinical Trials Registry, number +000007051.

Patient eligibility

Inclusion criteria were: (1) males and females with type 2 diabetes (age, >20 years); (2) rapid-acting insulin dosage <60 units/24 h; and (3) moderately controlled diabetes with a change in HbA1c <3% in the 12 weeks before screening. We used this criterion according to the previous clinical trials, in which the inclusion criteria involve a 3–4.5% range of HbA1c. For example, the LEAD-1 SU study included patients with type 2 diabetes with HbA1c 7.0–11.0% or 7.0–10.0%.¹⁹ Another study included patients who met the following inclusion criteria during the screening period: HbA1c 7–11.5% at 4 weeks before randomization, HbA1c 7–11% at 1 week before randomization.²⁰ Accordingly, we maximally allowed a <3% change in HbA1c for 12 weeks before screening. Exclusion criteria were: (1) hypersensitivity or contraindication to mitiglinide or sitagliptin; (2) a history of type 1 diabetes or a history of ketoacidosis; (3) experienced repeated episodes of unexplained hypoglycemia as defined by an FPG or without symptoms of hypoglycemia or <60 mg/dL with symptoms of hypoglycemia; (4) concomitantly suffering from infection or planning to have surgery; (5) treatment with a mitiglinide or sitagliptin within 12 weeks before screening; (6) concomitant corticosteroid therapy; (7) poorly controlled diabetes (with ketoacidosis or with an increase in HbA1c >3% in the 12 weeks before screening); (8) undergoing dialysis, and serum creatinine >2.5 mg/dL in men or >2.0 mg/dL in women; (9) alanine aminotransferase and/or aspartate aminotransferase (AST) levels more than 2.5-fold the upper limit of normal; (10) poorly controlled hypertension, systolic blood pressure >160 mm Hg, or diastolic blood pressure >100 mm Hg; (11) currently and/or previously suffering from heart failure; (12) severe retinopathy; (13) malignancy on active therapeutic regimen or without complete remission or cure; (14) pregnancy or breast feeding; and (15) some barrier to participation in the study, as assessed by the investigators.

Participants

Efficacy end points

The primary efficacy end point was the change in FPG from baseline to week 16. The secondary end point assessed at week 16 was the change in HbA1c from baseline. Other end points included blood 1,5-anhydroglucitol, fasting lipids, and insulin. The C peptide immunoreactivity (CPR) index (CPI) was calculated using the formula: $[100 \times \text{fasting CPR (ng/mL)}] / [18 \times \text{FPG (mm)}]$.²¹ C peptide and insulin levels were determined by an immunoenzymometric assay using Tosoh kits (Shunan, Japan). The lower limit of quantification for CPR was 0.2 ng/mL. The intra-assay and inter-assay coefficients of variation were <6%. Glucose and HbA1c were measured by standard methods. The results of a physical examination, vital signs (blood pressure), body weight, and laboratory evaluations, including

hematology, serum chemistry, and urinalysis, were recorded throughout the study.

Serum fatty acid levels were measured as a secondary outcome. A serum sample (approximately 0.2 mL) and 2 mL chloroform-methanol (2:1) were placed in a Pyrex centrifuge tube, homogenized with a Polytron homogenizer (PCU-2-110; KINEMATICA GmbH, Lucerne, Switzerland), and centrifuged at 3000 rpm for 10 min. An aliquot of the chloroform-methanol extract was transferred to another Pyrex tube and dried under a nitrogen gas stream. The dried sample was dissolved in a 100 μ L 0.4 M potassium methoxide methanol/14% boron trifluoride-methanol solution, and the fatty acid concentration was measured at SRL Inc. by gas chromatography (Shimizu GC 17A, Kyoto, Japan). The $\Delta 5$ desaturase (D5D) activity index and the $\Delta 6$ desaturase (D6D) activity index were expressed as the arachidonic acid to dihomo- γ -linolenic acid ratio and the γ -linolenic acid ratio to the linoleic acid ratio in blood, respectively.

Safety and tolerability were assessed by reviewing several safety parameters. Key safety parameters included general adverse experiences (AEs), treatment discontinuations, hypoglycemic events, and hyperglycemic events, as well as other parameters of interest, such as body weight and urinary ketones. AEs were monitored throughout the study and were rated by the investigators for intensity and their relationship to the study drug. AEs with an onset date up to 2 weeks after concluding treatment were evaluated in person.

A computer-generated dynamic randomization sequence assigned participants in a 1:1 ratio to treatment in the sitagliptin or mitiglinide group to adjust for demographic differences (age, insulin dose, and HbA1c) between the agents' groups. The study continued in an open-label fashion for an additional 16 weeks as described. Combination therapy was initiated on the day on which insulin injection therapy was completely withdrawn. The concomitantly used OHAs and medications other than hypoglycemic agents were continued after the switch. Patients remained on stable doses of the medications during the study period. The investigators did not use rescue medication such as insulin or sulfonylureas at any time after randomization even if patients did not achieve a satisfactory therapeutic effect.

All patients and responsible guardians underwent 1 h of nutritional counseling with an experienced dietician before the study. In addition, all patients were given a standard calorie diet (30 kcal/kg/day; 50–60% carbohydrate, 20–30% fat, and 15–20% protein) and exercise (5–6 metabolic equivalent estimations for 30 min daily) counseling before the study.

Arginine-stimulation test

The arginine-stimulation test has been demonstrated to be a valid method for evaluating residual β -cell function, even during periods of hyperglycemia.²² We previously showed that arginine-evoked insulin secretion predicts the requirement for basal insulin replacement in

patients with type 2 diabetes.¹ In the present study, we tested the hypothesis whether the β -cell function evaluated with the arginine-stimulation test predicts the effects of sitagliptin or mitiglinide on HbA1c after switched from insulin therapy. Patients were kept still for 30 min after an overnight fast, and CPR were assessed at the preloading baseline (0 min). Arginine (30 g) was administered intravenously by infusing a 10% L-arginine hydrochloride solution over 30 min. Blood was collected at seven time points: preloading (0 min) and 15, 30, 45, 60, 90, and 120 min after arginine loading. Circulating CPR was measured at each time point and used to construct an arginine-stimulated time-response curve. The values of the area under the concentration-time curve for CPR (AUCCPR) between time 0 and 120 min were calculated using the trapezoidal rule and indicate the insulin-secreting response to arginine. The value of Arginine Δ CPR was defined as the difference between maximal and basal levels of CPR during the arginine test.

Lipid meal test

Participants ingested a liquid meal (750 kcal, 500 mL; Pulmocare, Abbott Japan, Tokyo, Japan) containing 53 g carbohydrate, 47 g lipid (including 20% medium chain triglycerides), and 31 g protein,²³ which has the highest carbohydrate and fat contents among the liquid test meals available at our hospital, after an overnight fast. Venous blood was obtained before and 30, 60, 120, and 180 min after ingestion, and plasma glucose and triglycerides were measured. Patients were instructed not to take sitagliptin or mitiglinide before the test. The AUCCPR values between time 0 and 180 min were calculated using the trapezoidal rule and indicate the insulin-secreting responses to the lipid meal test. The value of the lipid meal test Δ CPR was defined as the difference between the maximal and basal levels of CPR during the lipid meal test.

Treatment satisfaction

Treatment satisfaction was a secondary outcome and was assessed using the Diabetes Treatment Satisfaction Questionnaire (DTSQ)^{24–26} at baseline and at the end of the study. The overall treatment satisfaction score was calculated as the sum of DTSQ item 1, Satisfaction; item 4, Convenience; item 5, Flexibility; item 6, Understanding; item 7, Recommend to others; and item 8, Wish to continue. Item 2, perceived hyperglycemia frequency, and item 3, perceived hypoglycemia frequency were treated as separate variables. The quality of life (QOL) instrument was not designed to measure treatment satisfaction related to the device.

Statistical analysis

Sample size was estimated to be 26 in each group to detect a 31.6 and 15.6 mg/dL decreased in FPG in the sitagliptin group²⁷ and mitiglinide group,²⁸ respectively, with an α of 0.05 (one tailed) and a β of 0.20 with 80%

power and a standardized effect size of 25. To take the dropout rate of 15% into account, the aim was to include 60 participants. Two analyses were conducted. Data that were missing for participants who discontinued the study were replaced with baseline data for the intention-to-treat analysis. In the second analysis, the only data included were from participants who completed the study (through the 16-week follow-up period). We performed a completed case analysis rather than an intention-to-treat analysis because there were few dropouts and their reasons for dropping out were unrelated to baseline values or their responses. Data are expressed as means±SD. The SPSS (V.22.0; SPSS, Chicago, Illinois, USA) was used for all the statistical analyses. Parameters were analyzed using the Wilcoxon signed-rank test for the intergroup comparison, and Mann-Whitney's U test for the internal group comparison. Associations between variables were assessed using Spearman's rank correlation coefficient. p Values <0.05 were considered as statistically significant.

RESULTS

Baseline metabolic parameters

Patients were recruited between May 2010 and July 2011, with the follow-up continuing for 16 weeks thereafter. Sixty patients consented to participate in the study and were screened and randomized (see online supplementary figure S1). The mean age of all participants was 63.5±12.0 years, mean average diabetes duration was 9.7±9.2 years, mean average insulin dose was 21.3±8.8 U/24 h, mean average duration of insulin use was 4.3±5.6 years, and mean body mass index (BMI) was 24.3±4.2 kg/m² (see online supplementary table S1). FPG, HbA1c, and CPR immediately before the switch were 147.8±36.3 mg/dL, 6.8±0.7%, and 1.9±0.8 ng/mL, respectively.

The groups were generally well balanced with respect to baseline demographics and disease characteristics, except for the serum creatinine level (sitagliptin creatinine (Cre) 0.69±0.19, mitiglinide Cre 0.81±0.23, p=0.036).

Of the 60 patients enrolled, 3 dropped out after the switch. The first dropout case was in the mitiglinide group (age, 70 years). The participant had returned to insulin therapy and developed a subconjunctival hemorrhage 8 weeks after the switch; the second case was in the sitagliptin group (age, 69 years). The participant voluntarily returned to insulin treatment and withdrew consent 3 days after the switch; and the third case (age, 57 years) returned to insulin therapy and became hyperglycemic 12 weeks after the switch (see online supplementary figure S1).

Clinical outcomes

FPG, which was the primary study outcome, increased significantly at the end of the study from 146.5±36.3 to 168.0±38.8 mg/dL in the mitiglinide group, but did not change in the sitagliptin group.

Body weight, BMI, and waist circumference decreased significantly compared with baseline values in both groups at the end of the study (table 1). γ -GTP and triglycerides increased, and high-density lipoprotein cholesterol and adiponectin decreased, in the sitagliptin group, but not in the mitiglinide group. Sitagliptin increased the CPI, whereas mitiglinide significantly decreased the CPI.

The CPR responses after arginine were diminished in both groups. We investigated the liquid meal test results before and after switching to an OHA from insulin. The AUC CPR during the lipid meal test decreased significantly in the sitagliptin group when the participants switched from insulin.

Systolic blood pressure, blood urea nitrogen, AST, total cholesterol, small dense low-density lipoprotein, and tumor necrosis factor α had not changed significantly in either group at the end of the study.

Changes in plasma fatty acid composition

Sitagliptin significantly increased levels of lauric acid, myristic acid, γ -linolenic acid, α -linolenic acid, eicosatrienoic acid, dihomo- γ -linolenic acid, and erucic acid, while mitiglinide had no effect (table 2). As a result, sitagliptin significantly decreased D5D, whereas it significantly increased D6D. Mitiglinide did not affect D5D or D6D. Levels of lauric acid, eicosatrienoic acid, and dihomo- γ -linolenic acid increased significantly in the sitagliptin group compared with the mitiglinide group (table 2).

Treatment satisfaction

The mean DTSQ scores for the sitagliptin and mitiglinide groups were 24.2±6.7 and 22.3±1.6, respectively, at baseline and 29.6±4.5 and 28.4±1.3 respectively, at the end of the study (table 3). No significant differences were observed in the change in treatment satisfaction scores between groups (sum of items 1, 4, 5, 6, 7, and 8) or for the changes in perceived frequency of hyperglycemia (item 2) or hypoglycemia (item 3) at the end point (table 3).

Factors associated with improved HbA1c

We evaluated the correlation between factors and the change in HbA1c in a univariate analysis (see online supplementary table S2). Diabetes duration and use of insulin, physical balance, and fatty acid composition were not predictors of a change in HbA1c. Total insulin doses before switching from mealtime bolus insulin monotherapy to either sitagliptin or mitiglinide predicted changes in HbA1c in both groups. Patients whose mean total daily doses of rapid-acting insulin analog were 16.6 and 17.8 units were switched to sitagliptin and mitiglinide, respectively, without a change in the HbA1c level (see online supplementary figure S2). Total insulin doses/body weight predicted changes in HbA1c only in the sitagliptin group, but not in the mitiglinide group, whereas body weights did so only in the mitiglinide

Table 1 Baseline patient characteristics and changes after 16 weeks

	Sitagliptin			Mitiglinide			
	Before	After	p Value*	Before	After	p Value*	p Value†
Body weight (kg)	62.8±11.6	61.5±11.5	0.008	63.1±15.4	61.7±14.9	0.006	0.900
Body mass index (kg/m ²)	24.6±3.8	24.1±3.6	0.007	24.2±4.6	23.7±4.5	0.003	0.968
Waist circumference (cm)	88.0±11.1	86.1±10.0	0.025	87.6±14.1	85.8±12.9	0.001	0.999
Systolic blood pressure (mm Hg)	127.8±17.0	131.7±14.4	0.258	123.0±11.6	127.2±16.6	0.209	0.953
Fasting plasma glucose (mg/dL)	145.2±28.2	142.7±25.6	0.616	146.5±36.3	168.0±38.8	0.032	0.033
HbA1c (%)	6.6±0.5	7.2±0.9	0.000	7.0±0.8	7.9±1.5	0.000	0.153
BUN (mg/dL)	15.6±4.5	14.7±3.0	0.250	16.8±5.2	16.6±6.3	0.821	0.579
Cre (mg/dL)	0.69±0.19	0.68±0.19	0.742	0.81±0.24	0.78±0.24	0.030	0.166
Serum aspartate aminotransferase (IU/L)	23.2±7.2	24.8±9.5	0.279	30.0±20.1	27.3±17.0	0.414	0.236
Serum alanine aminotransferase (IU/L)	24.1±14.6	27.8±9.5	0.076	33.2±21.8	31.8±21.1	0.705	0.222
Plasma γ -glutamyltransferase (IU/L)	32.2±17.0	39.5±24.8	0.013	31.9±20.9	30.8±18.1	0.752	0.060
Total cholesterol (mg/dL)	182.5±30.1	182.6±32.4	0.979	181.6±23.8	177.6±22.5	0.341	0.485
Triglycerides (mg/dL)	113.3±48.3	168.4±46.2	0.022	107.1±46.3	116.1±49.6	0.228	0.060
HDL-C (mg/dL)	64.9±34.1	52.5±13.9	0.045	55.6±17.2	54.6±15.5	0.479	0.072
sdLDL (mg/dL)	32.9±13.9	36.8±17.0	0.159	27.9±8.2	28.2±10.0	0.827	0.255
Fasting serum insulin (IU/L)	10.0±6.6	8.3±5.7	0.517	8.9±8.0	9.1±10.3	0.879	0.118
CPR (ng/mL)	1.8±0.7	2.1±0.8	0.079	2.0±0.8	1.9±0.8	0.529	0.638
Arginine Δ CPR (ng/mL)	2.8±1.4	2.3±1.5	0.049	2.7±1.6	2.4±1.8	0.028	0.203
Arginine AUC CPR $\times 10^2$	4.6±1.6	4.4±2.0	0.587	4.7±2.1	4.6±2.1	0.778	0.731
Lipid meal test Δ CPR (ng/mL)	4.9±2.4	4.3±1.3	0.109	5.1±2.6	4.6±2.8	0.166	0.954
Lipid meal test AUC CPR $\times 10^2$	8.7±3.6	8.1±3.1	0.038	9.2±3.6	8.5±0.4	0.216	0.870
1,5-anhydroglucitol (mg/mL)	12.6±6.4	9.5±5.3	0.001	11.7±6.7	8.2±7.3	0.000	0.736
Leptin (ng/mL)	8.7±6.5	8.5±7.1	0.855	10.5±13.4	8.9±11.0	0.082	0.215
Adiponectin (mg/mL)	4.5±3.9	4.0±3.4	0.019	5.0±4.4	4.4±3.1	0.138	0.904
TNF- α (pg/mL)	2.9±1.7	1.6±1.7	0.267	2.1±1.9	2.0±1.6	0.801	0.325
HOMA-b	44.6±28.9	38.0±25.0	0.226	49.0±23.5	44.5±28.4	0.351	0.773
CPI	1.3±0.5	1.4±0.6	0.052	1.5±0.7	1.2±0.7	0.021	0.003

Data are means \pm SD.

*p Value for the intragroup comparison (baseline vs 16 weeks).

†p Value for the intergroup comparison (change from baseline between groups).

AUC, area under the curve; BUN, blood urea nitrogen; CPI, C peptide immunoreactivity index; CPR, C peptide immunoreactivity; Cre, creatinine; HbA1c, glycated hemoglobin; HDL-C, high-density lipoprotein cholesterol; HOMA, homeostasis model assessment of insulin resistance; sdLDL, small dense low-density lipoprotein; TNF, tumor necrosis factor.

group, but not in the sitagliptin group (see online supplementary table S2). Use of >0.27 IU/kg of a rapid-acting insulin analog predicted an increase in HbA1c after switching to sitagliptin (see online supplementary figure S2).

The CPI was also a predictor for a change in HbA1c in the sitagliptin group, but not in the mitiglinide group; patients with a CPI <1.4 developed a worse HbA1c after switching to sitagliptin (see online supplementary figure S3). Docosahexaenoic acid (DHA) and eicosapentaenoic acid (EPA) levels did not predict a sitagliptin-mediated improvement in glycemic control. Changes in HbA1c in the mitiglinide group were negatively associated with changes in body weight and BMI.

DISCUSSION

This is the first report showing the feasibility of substituting an OHA for insulin injection therapy in an open-

label randomized, parallel-group study. Our results show that FPG increased significantly in participants receiving mitiglinide, whereas no changes were observed in those administered sitagliptin. Mealtime bolus insulin monotherapy was superior to sitagliptin and mitiglinide for controlling HbA1c. Sitagliptin acted on FPG, whereas mitiglinide may act on the postprandial plasma glucose level to achieve a similar HbA1c after the switch from a bolus insulin regimen.

The majority of patients with type 2 diabetes treated with insulin have difficulty achieving or maintaining target glycemic control without an associated weight gain.²⁹ In this study, body weight, BMI, and waist circumference decreased significantly in both OHA groups after the switch from insulin. OHAs are more effective than bolus insulin monotherapy for maintaining weight in patients with type 2 diabetes at high risk for cardiovascular disease. We did not show a positive effect of OHAs on lipid profiles or blood pressure control. This could

Table 2 Changes in plasma fatty acid composition

	Sitagliptin		p Value*	Mitiglinide		p Value*	p Value†
	Before	After		Before	After		
C12:0 (lauric acid)	1.6±1.0	2.7±2.2	0.011	1.7±1.2	1.7±0.7	0.988	0.024
C14:0 (myristic acid)	23.7±9.8	32.3±17.5	0.015	24.9±12.5	26.3±9.2	0.586	0.083
C16:0 (palmitic acid)	707.9±182.1	779.3±322.1	0.212	707.4±129.9	680.0±125.6	0.270	0.114
C16:1n-7 (palmitoleic acid)	71.9±27.5	78.4±37.1	0.316	75.8±37.8	72.6±40.1	0.521	0.233
C18:0 (stearic acid)	213.0±42.9	232.8±86.2	0.244	204.0±30.3	197.9±31.9	0.269	0.148
C18:1n-9 (oleic acid)	644.2±245.2	747.8±405.7	0.151	606.9±125.6	607.0±142.6	0.997	0.165
C18:2n-6 (linoleic acid)	818.7±178.1	845.0±279.2	0.514	781.0±151.6	772.4±165.3	0.746	0.468
C18:3n-6 (γ-linolenic acid)	10.0±4.7	11.6±6.5	0.022	9.1±4.5	9.3±3.8	0.805	0.159
C18:3n-3 (α-linolenic acid)	26.1±11.3	35.8±26.7	0.029	23.8±8.6	25.1±10.9	0.487	0.073
C20:0n-6 (arachidic acid)	7.1±1.4	7.5±2.4	0.337	7.2±1.1	6.9±1.1	0.083	0.145
C20:1n9 (eicosenoic acid)	5.8±2.5	6.8±4.7	0.290	5.6±2.8	5.1±1.1	0.329	0.163
C20:2n6 (eicosadienoic acid)	5.9±1.7	6.3±2.2	0.332	5.7±1.3	5.6±1.3	0.637	0.280
C20:3n9 (eicosatrienoic acid)	2.2±1.2	2.6±1.4	0.012	2.0±1.1	1.8±1.0	0.436	0.027
C20:3n-6 (dihomo-γ-linolenic acid)	35.8±11.3	39.6±14.6	0.030	37.7±12.2	35.7±10.2	0.248	0.018
C20:4n-6 (arachidonic acid)	189.0±41.0	177.6±53.8	0.065	178.7±32.1	163.7±23.2	0.016	0.663
C20:5n-3 (eicosapentaenoic acid)	73.0±30.2	70.1±32.2	0.579	78.8±39.9	73.2±42.7	0.511	0.783
C22:0 (behenic acid)	18.3±3.7	17.9±5.4	0.583	18.4±4.0	17.8±4.7	0.269	0.836
C22:1n-9 (erucic acid)	1.5±0.5	1.8±0.9	0.047	1.6±0.6	1.8±0.5	0.121	0.674
C22:4n-6 (docosatetraenoic acid)	5.0±1.6	5.4±2.3	0.182	4.7±1.4	4.6±1.5	0.588	0.154
C22:5n-3 (docosapentaenoic acid)	21.1±5.7	23.1±9.2	0.148	21.3±6.9	21.5±9.3	0.921	0.352
C22:6n-3 (docosahexaenoic acid)	156.0±33.1	149.8±37.5	0.357	163.8±50.1	149.2±39.7	0.057	0.404
C24:1 (nervonic acid)	34.7±6.2	32.0±6.4	0.007	37.9±7.4	36.8±7.7	0.297	0.250
SCD-16 (C16:1/C16:0)	0.10±0.03	0.10±0.02	0.755	0.10±0.04	0.10±0.04	0.971	0.840
SCD-18 (C18:1n-9/C18:0)	2.97±0.61	3.12±0.77	0.195	2.97±0.44	3.07±0.53	0.151	0.685
D6D (C18:3n-6/C18:2n6)	0.012±0.005	0.013±0.007	0.023	0.012±0.007	0.012±0.005	0.917	0.365
D5D (C20:4n-6/C20:3n6)	5.70±1.88	4.75±1.31	0.001	5.30±2.24	4.90±1.37	0.253	0.199

Data are means±SD.

*p Value for the intragroup comparison (baseline vs 16 weeks).

†p Value for the intergroup comparison (change from baseline between groups).

D5D, Δ5 desaturase.

be related to the limitation that the observation period was too short to detect beneficial effects on lipid profiles or blood pressure. Sitagliptin-mediated and mitiglinide-mediated improvements in glycemic control were independent of the lipid profile or insulin secretion (see online supplementary table S2), suggesting that unique and as yet unrecognized mechanisms may underlie the actions. Indeed, insulin secretion during the arginine challenge and lipid meal tests decreased significantly in the sitagliptin group after the switch from insulin. The effects of glucagon-like peptide-1 on glucagon secretion, gastric emptying, and the autonomic nervous system may explain such an effect of sitagliptin.³⁰ In addition, our

results suggest that glinides also have a glucose-lowering effect independent of their effect on insulin secretion.

In contrast to a previous report,³¹ DHA and EPA levels did not predict the sitagliptin-mediated improvement in glycemic control (see online supplementary table S2). In addition, this is the first study to demonstrate sitagliptin-mediated and mitiglinide-mediated changes in serum fatty acid profiles in humans or animals. Sitagliptin, but not mitiglinide, dynamically altered fatty acid composition; it increased serum levels of fatty acids, such as lauric acid, myristic acid, γ-linolenic acid, α-linolenic acid, eicosatrienoic acid, dihomogamma-linolenic acid, and erucic acid. The effects of sitagliptin on fatty

Table 3 Changes in treatment satisfaction

	Sitagliptin			Mitiglinide			p Value†
	Before	After	p Value*	Before	After	p Value*	
Q1	4.1±1.7	4.9±1.1	0.057	4.3±0.3	4.8±0.3	0.197	0.620
Q2	3.1±1.4	2.6±1.7	0.264	2.6±0.3	2.9±0.4	0.412	0.170
Q3	2.3±1.9	1.9±1.9	0.358	1.3±0.2	1.9±0.4	0.166	0.110
Q4	3.7±1.7	5.2±0.9	0.000	3.0±0.4	5.0±0.3	0.000	0.268
Q5	3.7±1.3	4.7±1.3	0.006	3.1±0.4	4.8±0.3	0.000	0.146
Q6	4.1±1.3	4.6±1.0	0.043	4.6±0.2	4.5±0.3	0.887	0.154
Q7	4.3±1.5	5.0±0.8	0.013	3.7±0.4	4.4±0.3	0.052	0.931
Q8	4.1±1.6	5.1±1.0	0.002	3.7±0.4	4.8±0.3	0.008	1.000
Sum	24.2±6.7	29.6±4.5	0.000	22.3±1.6	28.4±1.3	0.001	0.759

Treatment satisfaction score: sum of items 1, 4, 5, 6, 7, and 8. Data are means±SD.

*p Value for the intragroup comparison (baseline vs 16 weeks).

†p Value for the intergroup comparison (change from baseline between groups).

acid profiles were independent of its effects on glycemic control, insulin sensitivity, and cardiovascular markers (data not shown). D5D and D6D catalyze the synthesis of long-chain n-6 and n-3 polyunsaturated fatty acids (PUFAs), and their activities can be estimated using PUFA product-to-precursor ratios.^{32 33} The D5D activity index is negatively associated with insulin resistance,^{33 34} onset of newly diagnosed type 2 diabetes,³² and an adverse profile of several metabolic risk factors in patients with metabolic syndrome³⁵ in cross-sectional studies. Insulin activates D5D in patients with diabetes.³⁶ However, another cross-sectional study showed that patients with poorly controlled type 2 diabetes have a higher D5D activity index,³⁷ and improving glycemic control with intensive insulin therapy significantly decreases D5D in patients with type 2 diabetes.³⁸ Our study is the first to show the effect of a dipeptidyl peptidase-4 (DPP-4) inhibitor on D5D and D6D. After the switch from insulin, sitagliptin significantly decreased D5D, whereas it significantly increased D6D. Neither the baseline levels of D5D nor D6D predicted the sitagliptin-mediated improvement in glycemic control. Thus, sitagliptin, but not mitiglinide, may exert unique pleiotropic effects on fatty acid composition. The molecular mechanisms underlying the sitagliptin-mediated effects on fatty acid metabolism should be pursued in future studies.

Finally, patients who took sitagliptin or mitiglinide after switching from insulin ameliorated overall QOL as assessed by the DTSQ. The DTSQ was developed to enable respondents to evaluate their current treatment in relation to their previous treatment. Among the DTSQ subscale scores, convenience of treatment, flexibility of treatment, and satisfaction to continue current treatment showed a significant increase after switching from insulin in both groups. Previously, it was reported that less treatment satisfaction is related to insulin treatment.³⁹ In addition, the satisfaction with treatment is reported to significantly correlate with adherence.⁴⁰ Therefore, in this study, convenience of OHAs may contribute to satisfaction with treatment.

Patient factors associated with changes in HbA1c remain unclear after switching from a bolus insulin regimen to an OHA. Total insulin doses before switching from mealtime bolus insulin monotherapy to either sitagliptin or mitiglinide predicted changes in HbA1c in both groups. Interestingly, total insulin doses/body weight predicted changes in HbA1c only in the sitagliptin group, but not in the mitiglinide group, whereas body weights did so only in the mitiglinide group, but not in the sitagliptin group. This may be because the effect of mitiglinide, but not sitagliptin, is dependent on plasma drug concentration that is decreased in increased body weight.

The baseline CPI significantly predicted changes in HbA1c only in the sitagliptin group. One study reported that the CPI is associated with pancreatic β -cell function in Japanese patients with type 2 diabetes; patients with CPI<0.8 usually require insulin therapy.⁴¹ Our study is the first to prospectively demonstrate usefulness of the CPI for “tailor-made” diabetic medicine. Patients with a CPI<1.4 had worse HbA1c levels after switching to sitagliptin.

Our study has some limitations. First, mealtime dosing of rapid-acting insulin analog monotherapy may be a less common regimen in the diabetes treatment strategy. However, we previously showed that approximately one-half of the Japanese patients with type 2 diabetes retain β -cell function enough to achieve appropriate control of FPG by rapid-acting insulin analog monotherapy.¹ We hypothesized that such patients may be considered switch to DPP-4 inhibitors or glinides. Second, it was unexpected that all the study participants experienced exacerbation in glycemic control after switching from bolus insulin regimen to OHAs. However, as a result, the potent effect of mealtime dosing of rapid-acting insulin analog monotherapy on glycemic control was confirmed in patients with type 2 diabetes. As we showed in this study, insulin doses and β -cell function may predict feasibility to sitagliptin therapy. Third, we intended to compare the efficacy of sitagliptin versus mitiglinide in controlling FPG after switching from

insulin therapy. Therefore, we designed a parallel group study just comparing these agents. However, setting the control group that continued the insulin therapy further enables one to compare the efficacy of bolus insulin and OHAs in controlling FPG and HbA1c.

In conclusion, nadir FPG and HbA1c were exacerbated in patients receiving sitagliptin or mitiglinide after switching from mealtime dosing of a rapid-acting insulin analog. Mean FPG increased significantly in the mitiglinide group, whereas it remained unchanged in the sitagliptin group, but participants achieved similar glycemic control after switching from the bolus insulin regimen. In contrast, switching to sitagliptin or mitiglinide decreased BMI and waist circumference and increased QOL. Sitagliptin, but not mitiglinide, may exert unique pleiotropic effects on fatty acid composition. Patients whose mean total daily doses of rapid-acting insulin analog were 16.6 and 17.8 units were switched to sitagliptin and mitiglinide, respectively, without a change in the HbA1c level. Additional therapy to sitagliptin or mitiglinide is clearly required to obtain equivalent glycemic control in patients using higher dosing of insulin.

Contributors TT is the guarantor. YT designed the study, recruited the patients, analyzed the data, and wrote the manuscript. YK analyzed and interpreted the data. AT, K-IK, and YK collected clinical information. SK initiated and organized the study. All the authors have read and approved the final manuscript.

Funding This work was supported by Grants-in-Aid from the Ministry of Education, Culture, Sports, Science, and Technology, Japan and research grants from Novo Nordisk, Eli Lilly, Ono, MSD, Kissei, and Takeda pharmaceutical companies (to TT and SK).

Competing interests None declared.

Patient consent Obtained.

Ethics approval UMIN 000007051.

Provenance and peer review Not commissioned; externally peer reviewed.

Data sharing statement No additional data are available.

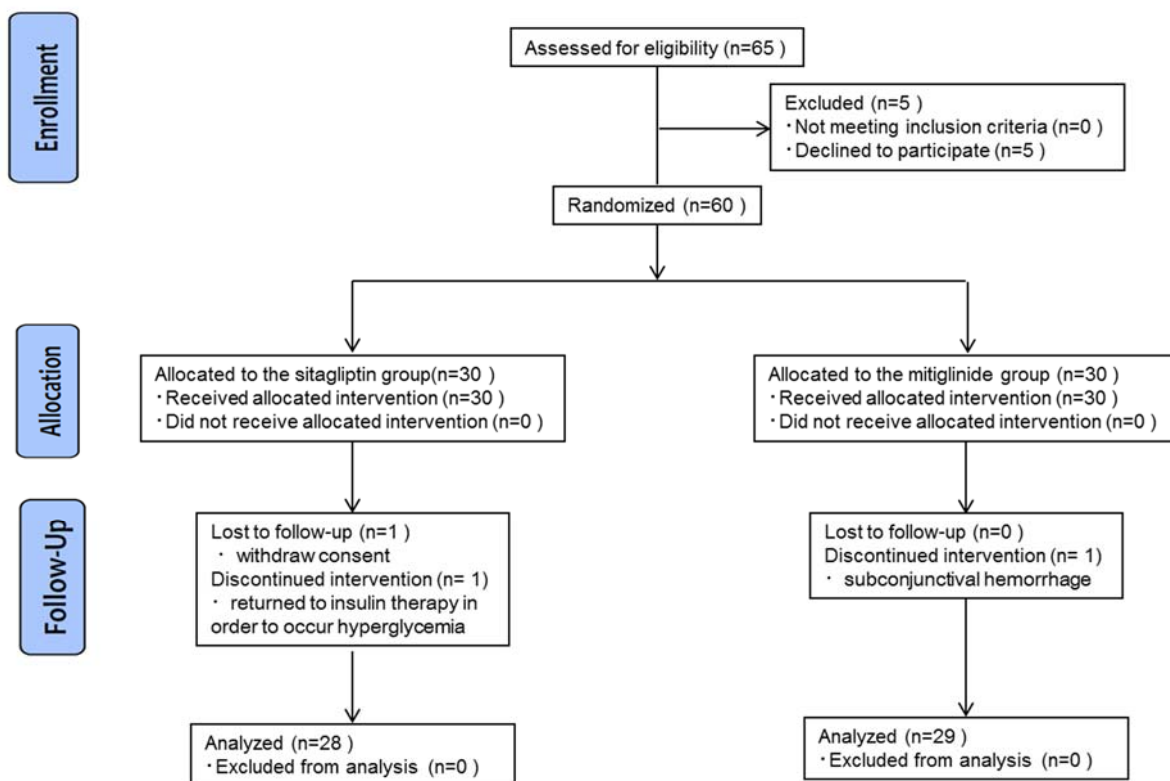
Open Access This is an Open Access article distributed in accordance with the Creative Commons Attribution Non Commercial (CC BY-NC 4.0) license, which permits others to distribute, remix, adapt, build upon this work non-commercially, and license their derivative works on different terms, provided the original work is properly cited and the use is non-commercial. See: <http://creativecommons.org/licenses/by-nc/4.0/>

REFERENCES

- Takamura T, Sakurai M, Nakamura M, *et al.* Factors associated with improvement of fasting plasma glucose level by mealtime dosing of a rapid-acting insulin analog in type 2 diabetes. *Diabetes Res Clin Pract* 2007;75:278–84.
- Anderson JH Jr., Brunelle RL, Koivisto VA, *et al.* Improved mealtime treatment of diabetes mellitus using an insulin analogue. *Clin Ther* 1997;19:62–72.
- Del Prato S. In search of normoglycaemia in diabetes: controlling postprandial glucose. *Int J Obes Relat Metab Disord* 2002;26:S9–S17.
- Mukhopadhyay A, Oh SW, Tissenbaum HA. Warming pathways to and from DAF-16/FOXO. *Exp Gerontol* 2006;41:928–34.
- Carstensen B, Witte DR, Friis S. Cancer occurrence in Danish diabetic patients: duration and insulin effects. *Diabetologia* 2012;55:948–58.
- Komura T, Mizukoshi E, Kita Y, *et al.* Impact of diabetes on recurrence of hepatocellular carcinoma after surgical treatment in patients with viral hepatitis. *Am J Gastroenterol* 2007;102:1939–46.
- Kita Y, Mizukoshi E, Takamura T, *et al.* Impact of diabetes mellitus on prognosis of patients infected with hepatitis C virus. *Metabolism* 2007;56:1682–8.
- Kalmijn S, Feskens EJ, Launer LJ, *et al.* Glucose intolerance, hyperinsulinaemia and cognitive function in a general population of elderly men. *Diabetologia* 1995;38:1096–102.
- Luchsinger JA, Tang MX, Shea S, *et al.* Hyperinsulinemia and risk of Alzheimer disease. *Neurology* 2004;63:1187–92.
- Kuusisto J, Koivisto K, Mykkänen L, *et al.* Association between features of the insulin resistance syndrome and Alzheimer's disease independently of apolipoprotein E4 phenotype: cross sectional population based study. *BMJ* 1997;315:1045–9.
- Ott A, Stolk RP, van Harskamp F, *et al.* Diabetes mellitus and the risk of dementia: the Rotterdam Study. *Neurology* 1999;53:1937–42.
- Curb JD, Rodriguez BL, Abbott RD, *et al.* Longitudinal association of vascular and Alzheimer's dementias, diabetes, and glucose tolerance. *Neurology* 1999;52:971–5.
- Luchsinger JA, Tang MX, Stern Y, *et al.* Diabetes mellitus and risk of Alzheimer's disease and dementia with stroke in a multiethnic cohort. *Am J Epidemiol* 2001;154:635–41.
- Cushman WC, Evans GW, Byington RP, *et al.*, ACCORD Study Group. Effects of intensive blood-pressure control in type 2 diabetes mellitus. *N Engl J Med* 2010;362:1575–85.
- Chyan YJ, Chuang LM. Dipeptidyl peptidase-IV inhibitors: an evolving treatment for type 2 diabetes from the incretin concept. Recent patents on endocrine. *Metab Immune Drug Discov* 2007;1:15–24.
- Amori RE, Lau J, Pittas AG. Efficacy and safety of incretin therapy in type 2 diabetes: systematic review and meta-analysis. *JAMA* 2007;298:194–206.
- Nauck MA, Meininger G, Sheng D, *et al.* Efficacy and safety of the dipeptidyl peptidase-4 inhibitor, sitagliptin, compared with the sulfonylurea, glipizide, in patients with type 2 diabetes inadequately controlled on metformin alone: a randomized, double-blind, non-inferiority trial. *Diabetes Obes Metab* 2007;9:194–205.
- Ohnata H, Koizumi T, Tsutsumi N, *et al.* Novel rapid- and short-acting hypoglycemic agent, a calcium(2s)-2-benzyl-3-(cis-hexahydro-2-isoindolinylcarbonyl) propionate (KAD-1229) that acts on the sulfonylurea receptor: comparison of effects between KAD-1229 and gliclazide. *J Pharmacol Exp Ther* 1994;269:489–95.
- Marre M, Shaw J, Brändle M, *et al.* Liraglutide, a once-daily human GLP-1 analogue, added to a sulphonylurea over 26 weeks produces greater improvements in glycaemia and weight control compared with adding rosiglitazone or placebo in subjects with type 2 diabetes (LEAD-1 SU). *Diabet Med* 2009;26:268–78.
- Neutel JM, Zhao C, Karyekar CS. Adding saxagliptin to metformin extended release (XR) or uptitration of metformin XR: efficacy on daily glucose measures. *Diabetes Ther* 2013;4:269–83.
- Katz A, Nambi SS, Mather K, *et al.* Quantitative insulin sensitivity check index: a simple, accurate method for assessing insulin sensitivity in humans. *J Clin Endocrinol Metab* 2000;85:2402–10.
- Tsuchiyama N, Takamura T, Ando H, *et al.* Possible role of alpha-cell insulin resistance in exaggerated glucagon responses to arginine in type 2 diabetes. *Diabetes Care* 2007;30:2583–7.
- Angellillo VA, Bedi S, Durfee D, *et al.* Effects of low and high carbohydrate feedings in ambulatory patients with chronic obstructive pulmonary disease and chronic hypercapnia. *Ann Int Med* 1985;103:883–5.
- Bradley C. Diabetes treatment satisfaction questionnaire. Change version for use alongside status version provides appropriate solution where ceiling effects occur. *Diabetes Care* 1999;22:530–2.
- Bradley C, Gamsu DS. Guidelines for encouraging psychological well-being: report of a Working Group of the World Health Organization Regional Office for Europe and International Diabetes Federation European Region St Vincent Declaration Action Programme for Diabetes. *Diabet Med* 1994;11:510–16.
- Ishii H, Bradley C, Riazi A, *et al.* The Japanese version of the Diabetes Treatment Satisfaction Questionnaire (DTSQ): translation and clinical evaluation. *Igaku No Ayumi* 2000;192:809–14.
- Mohan V, Yang W, Son HY, *et al.* Efficacy and safety of sitagliptin in the treatment of patients with type 2 diabetes in China, India, and Korea. *Diabetes Res Clin Pract* 2009;83:106–16.
- Kaku K, Tanaka S, Origasa H, *et al.* Effect of mitiglinide on glycemic control over 52 weeks in Japanese type 2 diabetic patients insufficiently controlled with pioglitazone monotherapy. *Endocr J* 2009;56:739–46.
- Calvert MJ, McManus RJ, Freemantle N. Management of type 2 diabetes with multiple oral hypoglycaemic agents or insulin in primary care: retrospective cohort study. *Br J Gen Pract* 2007;57:455–60.

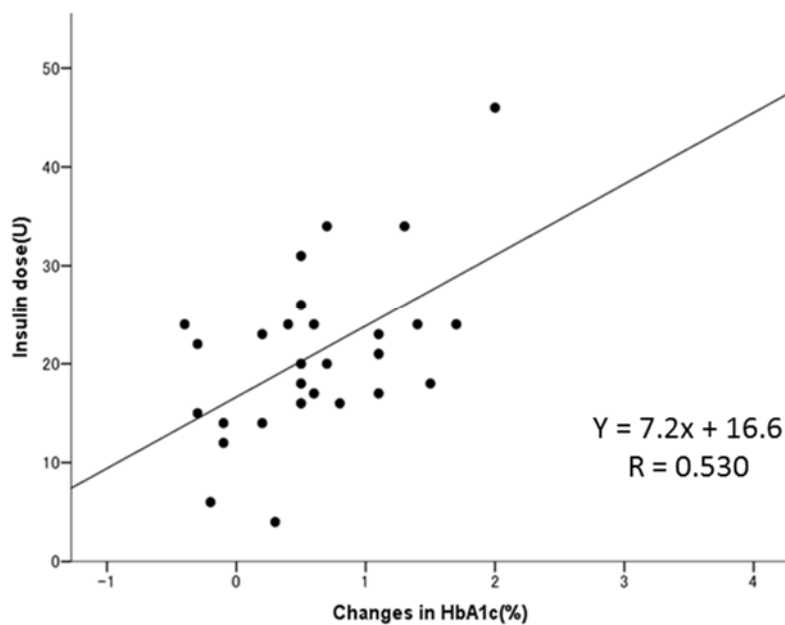
30. Eliasson B, Möller-Goede D, Eeg-Olofsson K, *et al.* Lowering of postprandial lipids in individuals with type 2 diabetes treated with alogliptin and/or pioglitazone: a randomised double-blind placebo-controlled study. *Diabetologia* 2012;55:915–25.
31. Senmaru T, Fukui M, Kobayashi K, *et al.* DPP-IV inhibitors is effective in patients with type 2 diabetes with high serum eicosapentaenoic acid concentrations. *J Diabetes Invest* 2012;3:498–502.
32. Kroger J, Schulze MB. Recent insights into the relation of $\Delta 5$ desaturase and $\Delta 6$ desaturase activity to the development of type 2 diabetes. *Curr Opin Lipidol* 2012;23:4–10.
33. Vessby B, Gustafsson IB, Tengblad S, *et al.* Desaturation and elongation of fatty acids and insulin action. *Ann N Y Acad Sci* 2002;967:183–95.
34. Warensjo E, Rosell M, Hellenius ML, *et al.* Associations between estimated fatty acid desaturase activities in serum lipids and adipose tissue in humans: links to obesity and insulin resistance. *Lipids Health Dis* 2009;8:37.
35. Mayneris-Perxachs J, Guerendiain M, Castellote AI, *et al.* Plasma fatty acid composition, estimated desaturase activities, and their relation with the metabolic syndrome in a population at high risk of cardiovascular disease. *Clin Nutr* 2014;33:90–7.
36. Boustani S, Causse JE, Descomps B, *et al.* Direct in vivo characterization of delta 5 desaturase activity in humans by deuterium labeling: effect of insulin. *Metabolism* 1989;38:315–21.
37. Imamura S, Morioka T, Yamazaki Y, *et al.* Plasma polyunsaturated fatty acid profile and delta-5 desaturase activity are altered in patients with type 2 diabetes. *Metabolism* 2014;63:1432–8.
38. Sartore G, Lapolla A, Reitano R, *et al.* Desaturase activities and metabolic control in type 2 diabetes. *Prostaglandins Leukot Essent Fatty Acids* 2008;79:55–8.
39. Nicolucci A, Giorgino R, Cucinotta D, *et al.* Validation of the Italian version of the WHO-Well-Being Questionnaire (WHO-WBQ) and the WHO-Diabetes Treatment Satisfaction Questionnaire (WHO-DTSQ). *Diabetes Nutr Metab* 2004;17:235–43.
40. Jordan J, Cahn P, Goebel F, *et al.* Abacavir compared to protease inhibitors as part of HAART regimens for treatment of HIV infection: patient satisfaction and implications for adherence. *AIDS Patient Care STDS* 2005;19:9–18.
41. Funakoshi S, Fujimoto S, Hamasaki A, *et al.* Analysis of factors influencing pancreatic beta cell function in Japanese patients with type 2 diabetes: association with body mass index and duration of diabetic exposure. *Diabetes Res Clin Pract* 2008;82: 353–8.

Supplementary figure S1. Flow diagram

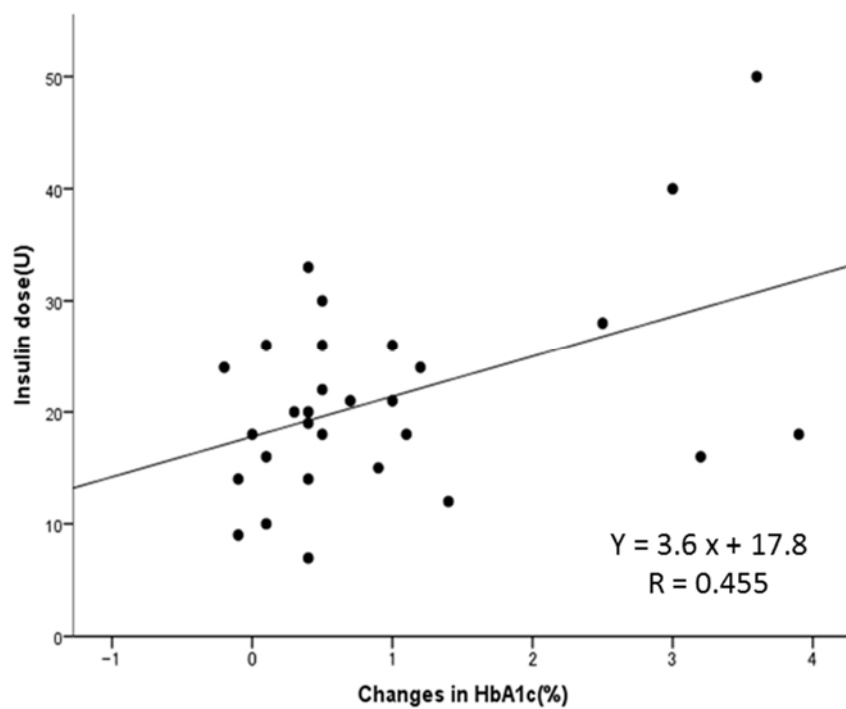


Supplemental figure S2. Insulin doses (A, B) Insulin dose per Body weight (C, D) and changes in HbA1c after the switch from a rapid-acting insulin analog.

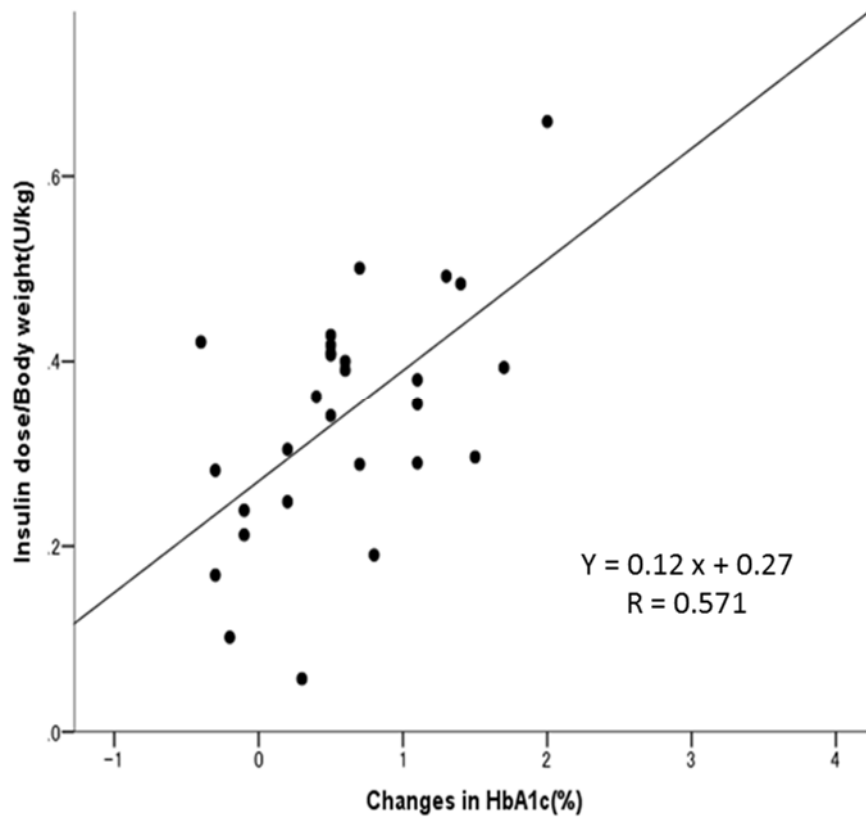
A. sitagliptin group



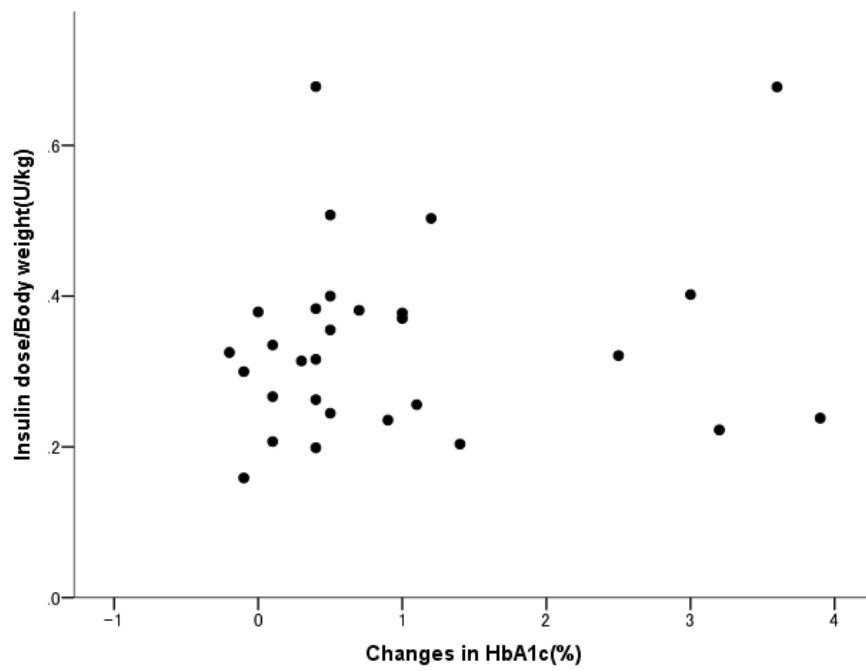
B. mitiglinide group



C. sitagliptin group

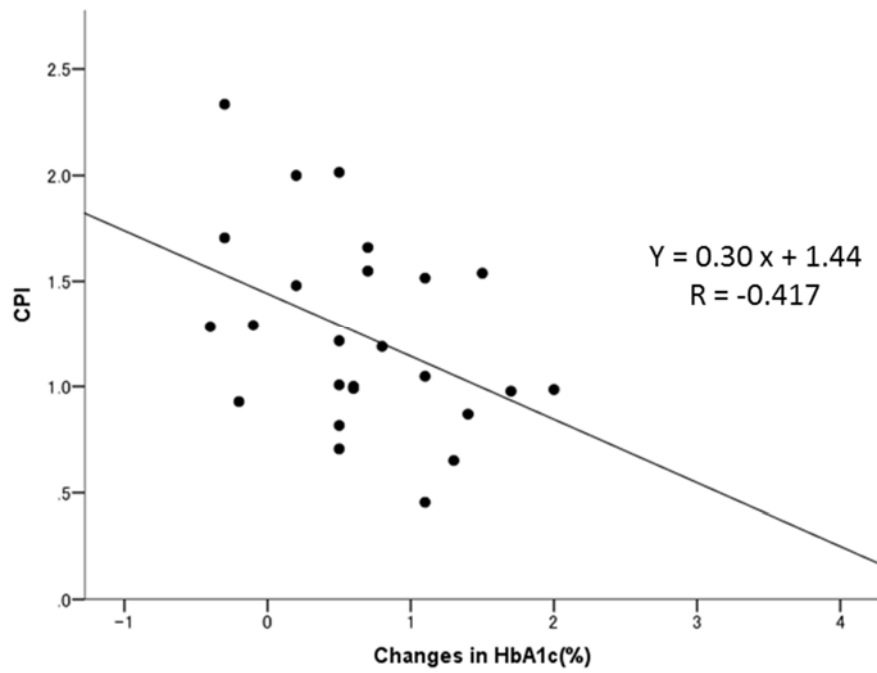


D. mitiglinide group

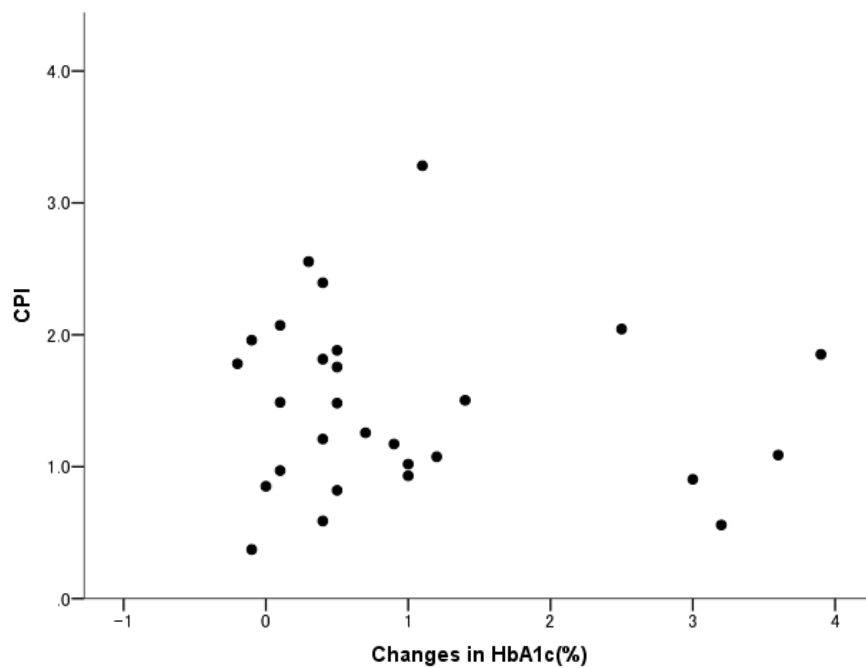


Supplemental figure S3. CPI and changes in glycated hemoglobin (HbA1c) after the switch from a rapid-acting insulin analog.

A. sitagliptin group



B. mitiglinide group



Supplemental table S1. Baseline characteristics of the patients completing the study.

	ALL (N=60)	Sitagliptin (N=30)	Mitiglinide (N=30)	P*
Male Female	37 23	18 12	19 11	
Age (years)	63.5 ± 12.0	61.0 ± 13.8	65.8 ± 9.7	0.126
Diabetes duration (years)	9.7 ± 9.2	7.2 ± 7.5	12.1 ± 10.2	0.044
Duration of use insulin (years)	4.3 ± 5.6	3.6 ± 3.6	5.0 ± 7.0	0.330
OHA (metformin/pioglitazone)	4/2	1/1	3/1	
ARB/CCB/Diuretic/Others	25/18/12/5	11/10/6/2	14/8/6/3	
Statin/Ezetimib/Others	21/4/2	11/2/0	10/2/2	
Insulin dose (IU/day)	21.3 ± 8.8	20.9 ± 8.4	21.7 ± 9.4	0.741
Insulin dose/BW (IU/kgday)	0.34 ± 0.13	0.34 ± 0.13	0.34 ± 0.13	0.896
Body weight (kg)	62.9 ± 13.4	62.5 ± 11.5	63.2 ± 15.2	0.843
Body mass index (kg/m ²)	24.3 ± 4.2	24.5 ± 3.8	24.2 ± 4.6	0.800
Waist circumference (cm)	87.5 ± 12.6	87.4 ± 11.4	87.5 ± 13.9	0.971
Systolic blood pressure (mmHg)	125.4 ± 14.3	127.8 ± 16.7	123.2 ± 11.4	0.029
Fasting plasma glucose (mg/dl)	147.8 ± 36.3	149.8 ± 37.2	145.8 ± 35.9	0.674
HbA1c (%)	6.8 ± 0.7	6.7 ± 0.6	6.9 ± 0.8	0.096
BUN (mg/dl)	16.1 ± 4.9	15.6 ± 4.4	16.6 ± 5.3	0.444
Cre (mg/dl)	0.75 ± 0.22	0.69 ± 0.19	0.81 ± 0.23	0.036
Serum aspartate aminotransferase (IU/L)	26.4 ± 15.3	22.9 ± 7.4	29.9 ± 19.8	0.077
Serum alanine aminotransferase (IU/L)	28.3 ± 24.8	23.7 ± 14.5	32.8 ± 31.3	0.158
Plasma gamma-glutamyltransferase (IU/L)	31.8 ± 24.5	31.7 ± 17.0	31.9 ± 30.4	0.974
Total cholesterol (mg/dl)	183.7 ± 28.2	184.9 ± 32.3	182.6 ± 24.0	0.751
Triglycerides (mg/dl)	109.4 ± 46.6	112.4 ± 47.0	106.4 ± 45.7	0.720
HDL-C (mg/dl)	61.6 ± 28.4	67.4 ± 36.1	56.0 ± 17.0	0.131
sdLDL (mg/dl)	30.2 ± 11.4	32.6 ± 13.8	28.0 ± 8.1	0.124
Fasting serum insulin (IU/L)	9.4 ± 7.4	10.1 ± 6.5	9.3 ± 7.7	0.641
CPR (ng/ml)	1.9 ± 0.8	2.0 ± 0.9	1.8 ± 0.7	0.284
1,5-anhydroglucitol (mg/ml)	12.0 ± 6.6	12.2 ± 6.6	11.9 ± 6.7	0.897
Leptin (ng/ml)	9.4 ± 10.4	8.4 ± 6.5	10.3 ± 13.3	0.498
Adiponectin (µg/ml)	4.8 ± 4.0	4.6 ± 3.9	5.0 ± 4.3	0.679
TNF-alpha (pg/ml)	2.4 ± 1.1	2.8 ± 1.7	2.0 ± 1.9	0.574
HOMA-beta	47.3 ± 21.4	44.2 ± 28.3	50.3 ± 25.0	0.577
CPI	1.3 ± 0.6	1.2 ± 0.5	1.4 ± 0.7	0.142

Data are means \pm standard deviation. *P-value for the intragroup comparison. OHA, oral hypoglycemic agent; ARB, angiotensin receptor blocker; CCB, calcium channel blocker; HDL-C, high-density lipoprotein cholesterol; sdLDL, small dense low-density lipoprotein; CPR, C-peptide immunoreactivity; TNF, tumor necrosis factor; HOMA, homeostasis model assessment of insulin resistance; CPI, C-peptide immunoreactivity index

Supplemental table S2. Factors associated with changes in glycated hemoglobin (HbA1c) level.

	ALL		Sitagliptin		Mitiglinide	
	R	P	R	P	R	P
Age (years)	0.085	0.532	0.311	0.107	-0.135	0.484
Diabetes duration (years)	0.021	0.878	0.329	0.087	-0.175	0.365
Duration of use insulin (years)	-0.156	0.245	-0.045	0.819	-0.222	0.247
insulin dose (IU/day)	0.459	0.000	0.530	0.004	0.455	0.013
insulin dose /BW (IU/kg)	0.285	0.032	0.571	0.001	0.161	0.405
Body weight (kg)	0.316	0.017	-0.118	0.551	0.498	0.006
Body mass index (kg/m ²)	0.183	0.173	-0.159	0.420	0.352	0.061
Waist circumference (cm)	0.288	0.030	-0.036	0.857	0.440	0.017
Fasting plasma glucose (mg/dl)	0.175	0.194	0.270	0.165	0.138	0.475
HbA1c (%)	0.198	0.140	0.135	0.492	0.161	0.406
CPR (ng/ml)	-0.099	0.482	-0.340	0.096	-0.033	0.868
Arg ΔCPR	-0.207	0.137	-0.038	0.854	-0.285	0.149
CPI	-0.141	0.341	-0.417	0.038	-0.096	0.627
EPA	0.133	0.343	0.009	0.967	0.182	0.363
DHA	0.192	0.168	0.104	0.614	0.283	0.152
D6D	0.170	0.220	0.119	0.554	0.193	0.334
D5D	-0.180	0.194	0.260	0.189	-0.364	0.062
ΔγGTP	0.160	0.235	0.210	0.284	0.227	0.237
ΔTG	-0.068	0.614	-0.132	0.503	0.140	0.468
ΔHDL-C	0.064	0.638	-0.063	0.750	0.213	0.266
ΔBW	-0.325	0.014	-0.104	0.598	-0.459	0.012
ΔBMI	-0.301	0.023	-0.102	0.607	-0.454	0.013
ΔWC	-0.156	0.247	-0.003	0.987	-0.316	0.095
ΔCPI	-0.281	0.044	-0.023	0.914	-0.343	0.074
ΔD6D	-0.211	0.130	0.366	0.066	-0.310	0.116
ΔD5D	0.152	0.276	-0.491	0.011	0.337	0.085

CPR, C-peptide immunoreactivity; CPI, CPR index; EPA, eicosapentaenoic acid; DHA, docosahexaenoic acid; D5D, delta-5 desaturase; D6D, delta-6 desaturase.