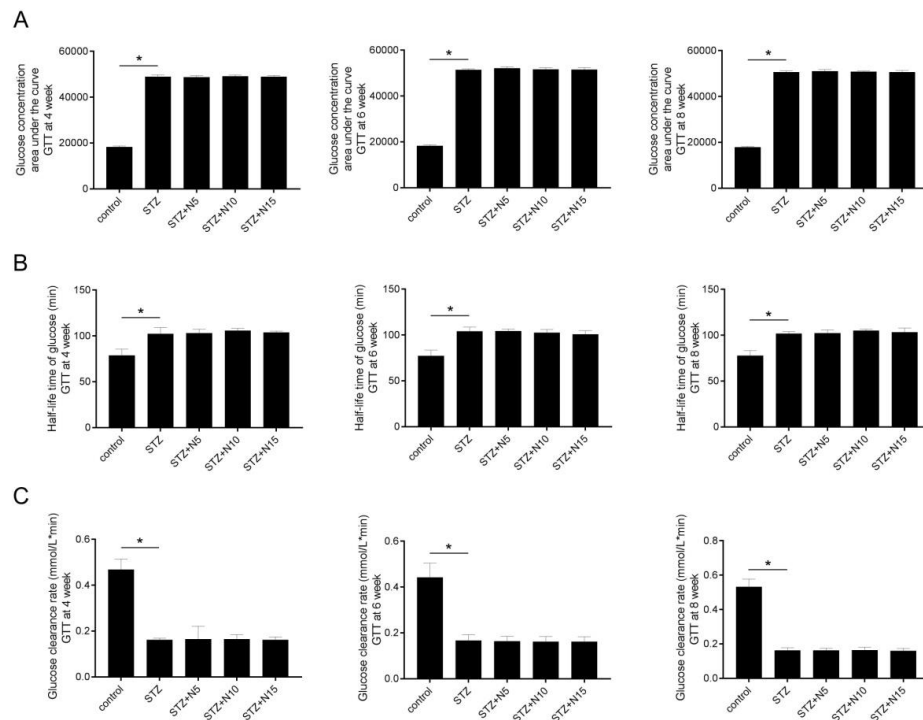
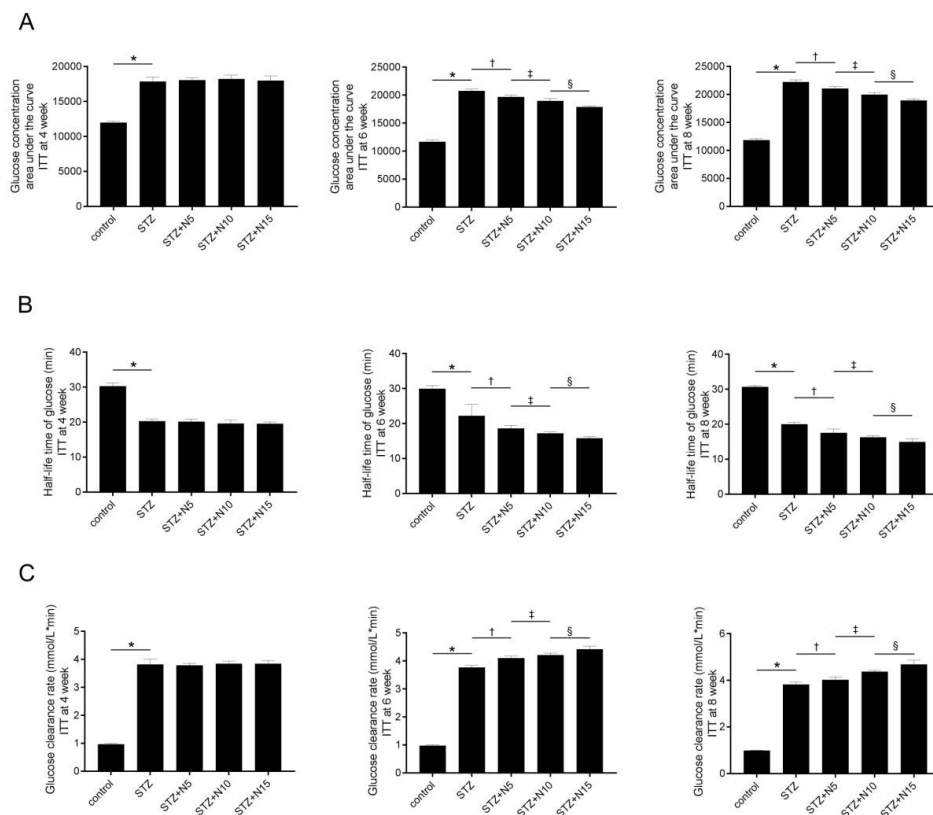


## Supplemental Materials



**Figure S1 Effects of nicorandil on glucose metabolism in GTT in diabetic rats**

A) Columns indicated glucose concentration area under the curve at 4, 6 and 8 week after STZ injection. B) Columns indicated half-life time of glucose at 4, 6 and 8 week after STZ injection. C) Columns indicated glucose clearance rate at 4, 6 and 8 week after STZ injection. Data were presented as (mean±SD). \* P<0.05 vs. control. (n=10)



**FigureS2 Effects of nicorandil on glucose metabolism in ITT in diabetic rats**

A) Columns indicated glucose concentration area under the curve at 4, 6 and 8 week after STZ injection. B) Columns indicated half-life time of glucose at 4, 6 and 8 week after STZ injection. C) Columns indicated glucose clearance rate at 4, 6 and 8 week after STZ injection. Data were presented as (mean±SD). \* P<0.05 vs. control; † P<0.05 vs. STZ; ‡ P<0.05 vs. STZ+N5; § P<0.05 vs. STZ+N10 (n=10)