




Random plasma glucose levels and cause-specific mortality among Chinese adults without known diabetes: an 11-year prospective study of 450,000 people

Jane Vermunt,¹ Fiona Bragg ,^{1,2} Jim Halsey,^{1,2} Ling Yang,^{1,2} Yiping Chen,^{1,2} Yu Guo,³ Huaidong Du ,^{1,2} Fanwen Meng,⁴ Pei Pei,⁵ Canqing Yu ,^{6,7} Jun Lv,^{6,7} Junshi Chen,⁸ Liming Li,^{6,7} Sarah Lewington,^{1,2,9} Zhengming Chen,^{1,2} on behalf of the China Kadoorie Biobank Collaborative Group

To cite: Vermunt J, Bragg F, Halsey J, *et al.* Random plasma glucose levels and cause-specific mortality among Chinese adults without known diabetes: an 11-year prospective study of 450,000 people. *BMJ Open Diab Res Care* 2021;**9**:e002495. doi:10.1136/bmjdr-2021-002495

► Additional supplemental material is published online only. To view, please visit the journal online (<http://dx.doi.org/10.1136/bmjdr-2021-002495>).

JV and FB contributed equally.

SL and ZC are joint senior authors.

Received 20 July 2021
Accepted 17 October 2021



© Author(s) (or their employer(s)) 2021. Re-use permitted under CC BY. Published by BMJ.

For numbered affiliations see end of article.

Correspondence to

Dr Fiona Bragg;
fiona.bragg@ndph.ox.ac.uk

ABSTRACT

Introduction We examined the associations between long-term usual random plasma glucose (RPG) levels and cause-specific mortality risks among adults without known diabetes in China.

Research design and methods The China Kadoorie Biobank recruited 512,891 adults (59% women) aged 30–79 from 10 regions of China during 2004–2008. At baseline survey, and subsequent resurveys of a random subset of survivors, participants were interviewed and measurements collected, including on-site RPG testing. Cause of death was ascertained via linkage to local mortality registries. Cox regression yielded adjusted HR for all-cause and cause-specific mortality associated with usual levels of RPG.

Results During median 11 years' follow-up, 37,214 deaths occurred among 452,993 participants without prior diagnosed diabetes or other chronic diseases. There were positive log-linear relationships between RPG and all-cause, cardiovascular disease (CVD) (n=14,209) and chronic kidney disease (CKD) (n=432) mortality down to usual RPG levels of at least 5.1 mmol/L. At RPG <11.1 mmol/L, each 1.0 mmol/L higher usual RPG was associated with adjusted HRs of 1.14 (95% CI 1.12 to 1.16), 1.16 (1.12 to 1.19) and 1.44 (1.22 to 1.70) for all-cause, CVD and CKD mortality, respectively. Usual RPG was positively associated with chronic liver disease (n=547; 1.45 (1.26 to 1.66)) and cancer (n=12,680; 1.12 (1.09 to 1.16)) mortality, but with comparably lower risks at baseline RPG ≥11.1 mmol/L. These associations persisted after excluding participants who developed diabetes during follow-up.

Conclusions Among Chinese adults without diabetes, higher RPG levels were associated with higher mortality risks from several major diseases, with no evidence of apparent thresholds below the cut-points for diabetes diagnosis.

INTRODUCTION

Diabetes is a known and important risk factor for mortality due to a range of vascular and non-vascular diseases, including ischemic heart disease (IHD), stroke, chronic kidney

Significance of this study

What is already known about this subject?

- Diabetes is a known risk factor for mortality from various vascular and non-vascular diseases, but the relevance of plasma glucose levels below the diabetes threshold remains uncertain.

What are the new findings?

- Among adults without known diabetes, there were positive and log-linear associations between usual random plasma glucose (RPG) and mortality from cardiovascular disease, chronic kidney disease, chronic liver disease, cancer and all causes, extending down to at least a usual RPG of 5.1 mmol/L.
- Approximately 15% higher risks of cardiovascular disease, cancer and all-cause mortality, and approximately 45% higher risks of mortality due to chronic kidney and chronic liver disease, were observed per 1 mmol/L higher usual RPG.
- These associations persisted after excluding participants who developed diabetes during the 11-year follow-up period, with the exception of modest attenuation of the association with chronic kidney disease mortality.
- Absolute excess mortality associated with higher RPG levels was predominantly attributable to cardiovascular disease and cancer.

How might these results change the focus of research or clinical practice?

- Glycemia, beyond its association with diabetes, may provide useful information for prediction of mortality risks.
- If the observed associations are causal, population level reductions in glycemia could contribute to significant reductions in mortality.

disease (CKD) and infectious diseases.^{1 2} However, it remains uncertain whether this reflects associations specific to diabetes, or

whether glycemia may still be a major risk factor for mortality even below the conventional clinical threshold for diagnosing diabetes.

Findings of previous studies investigating the associations of glycemia with mortality risks are mixed.^{3–5} While there is good evidence showing lower risk of mortality from cardiovascular diseases (CVDs) at lower plasma glucose levels below the diagnostic threshold for diabetes,^{4,6–8} the relationship with other specific causes of mortality is much less clear. Many studies examining these relationships have lacked adequate power to examine the shape of associations throughout the full glycemic range, and have instead studied broad glycemic categories.^{9–11} Moreover, the majority of existing evidence is derived from Western populations,^{4,11} and there has been no report to-date of the associations of random plasma glucose (RPG) with cause-specific mortality.

In recent decades, there has been a marked and rapid rise in the prevalence of diabetes and pre-diabetes in China,^{12–13} highlighting the importance of glycemia as a risk factor. Moreover, the burden of many major chronic diseases in China differs importantly from those in Western populations (eg, higher rates of mortality due to stroke, chronic liver disease and certain cancers, and comparably low rates of IHD mortality).¹⁴ As such, investigation of the associations of glycemia with cause-specific mortality in China would be expected to provide valuable new evidence on these associations, to inform disease prediction and prevention efforts in China and elsewhere.

Using data from the nationwide, prospective China Kadoorie Biobank (CKB) study of 0.5 million men and women, we examine the association between RPG levels and cause-specific mortality among Chinese adults without known diabetes.

RESEARCH DESIGN AND METHODS

Study population

Details of the CKB design, methods, and participants have been described previously.^{15–16} Briefly, the study population consisted of permanent, non-disabled residents aged 35–74 years recruited from five rural and five urban areas of China. The 10 study areas were selected from China's nationally representative Disease Surveillance Points¹⁷ to ensure diversity of disease prevalence and risk factors, while taking into consideration local capacity, study logistics, and disease and death registry data quality. All eligible residents from 100 to 150 rural villages or urban committees in each study area were invited to participate. The response rate was ~30%, and between 2004 and 2008, 512,726 people (including ~13,000 outside the target age range, extending the actual range to 30–79 years) were enrolled in the study.

Data collection

Demographic and lifestyle information, and personal and family medical history were collected via trained

interviewer-administered laptop-based questionnaires. A range of physical measurements were undertaken, including anthropometric measures, blood pressure and pulse rate, using calibrated instruments and standardized protocols. A 10 mL non-fasting (except participants from one area (Zhejiang) who were asked to fast) venous blood sample was collected, with time since last eating recorded. Plasma glucose levels were measured immediately on-site using the SureStep Plus meter (LifeScan, Milpitas, California, USA). Participants with RPG levels ≥ 7.8 and < 11.1 mmol/L were invited to return the following day for a fasting plasma glucose test. Participants who reported pre-existing doctor-diagnosed diabetes were defined as having known diabetes. Screen-detected diabetes was defined as no known diabetes and $\text{RPG} \geq 11.1$ mmol/L.

Resurveys, including randomly selected samples of approximately 5% of surviving participants, were conducted in 2008 and 2013–2014. As well as collecting the same data as in the baseline survey, enhancements (eg, ECG, bone density and cIMT measurements) and modification of certain procedures (eg, use of the On Call Advanced glucometer (ACON, San Diego, California, USA) for measurement of plasma glucose levels in the second resurvey) were included.

Morbidity and mortality follow-up

The vital status of participants was obtained periodically from local registries and through annual review of official residential records, health insurance data and active confirmation through visits to local communities. Cause-specific mortality was ascertained primarily from death certificates. If a participant died and had not sought medical attention prior to death (<5% of deaths), cause of death was obtained via verbal autopsy.¹⁸ Information on non-fatal diseases was collected through linkage (via unique national identification) with disease registries (for stroke, IHD, cancer and diabetes) and national health insurance claim databases (covering >98% of study participants). Cause of death was coded using the 10th International Classification of Diseases (ICD10) by trained staff blinded to participant baseline information. All ICD10 classified causes of death were included in the present analyses (online supplemental table S1). By January 1, 2018 (the censoring date for these analyses), <1% of participants (n=4724) were lost to follow-up.

Statistical analyses

Participants with previously diagnosed (but not screen-detected) diabetes at baseline (n=16 162), missing values for RPG (n=8341, due to a supply issue with testing strips) or body mass index (BMI) (n=2), or implausible or outlying values for systolic blood pressure (SBP), diastolic blood pressure, BMI, waist or hip circumference, or height (n=1058) were excluded. Participants with a self-reported history of physician diagnosed IHD, chronic liver disease, CKD, stroke, transient ischemic attack, or cancer were also excluded (n=37,969), leaving 452,993 participants for inclusion in the present analyses.

Baseline RPG was categorized (<4.8, 4.8–5.2, 5.3–5.7, 5.8–6.4, 6.5–7.5, 7.6–11.0, ≥ 11.1 mmol/L) to ensure a similar number of events in each category, additionally incorporating the diagnostic threshold for diabetes.¹⁹ Prevalence and mean values of baseline characteristics were calculated across RPG categories, standardized to the age, sex and study area structure of the total study population.

HRs for the associations of baseline RPG with all-cause and cause-specific mortality were estimated using Cox proportional hazards models stratified by age-at-risk (5 year age groups), sex and study area (10 regions), and adjusted for education level (no formal school/primary school/middle school/high school/technical school or college/university), smoking (never/occasional/ex-regular/current regular), alcohol drinking (never regular/ex-regular/occasional or seasonal/monthly/reduced intake/weekly), physical activity (metabolic equivalent of task (MET) hours per day), BMI, waist and hip circumference, and SBP. Group-specific variances were used to estimate 95% CIs for each HR, allowing comparisons between any RPG categories and not only with the reference category.²⁰ Assuming the existence of log-linear associations, baseline RPG was examined as a continuous variable after additionally excluding participants with screen-detected diabetes at baseline (to avoid treatment bias resulting from subsequent diagnosis of diabetes). Examination of HRs for the first five and subsequent years of follow-up showed no strong evidence of departure from the proportional hazard's assumption.

Repeat RPG measures at subsequent resurveys were used to correct for regression dilution bias arising due to within-person variation in RPG levels. The regression dilution ratio (RDR=0.45) was estimated as the mean of the slopes of regression lines between baseline RPG and RPG at each resurvey (approximating to the midpoint of follow-up), adjusted for age, sex, study area and fasting time.^{21 22} Differences between the overall mean RPG and mean RPG in each category were multiplied by the RDR and the resulting differences added to the overall mean RPG to estimate the mean usual RPG level in each category. Log HRs per 1.0 mmol/L higher baseline RPG were multiplied by the reciprocal of the RDR to estimate HRs per 1.0 mmol/L higher usual (longer-term average) RPG. Adjusted HRs for all-cause, CVD and cancer mortality per 1.0 mmol/L higher usual RPG were compared across strata of other baseline variables and χ^2 values for trend and heterogeneity calculated. Sensitivity analyses were completed excluding deaths recorded during the first 3 years of follow-up and, separately, participants who developed diabetes during follow-up, from Zhejiang province or with poor self-rated health at baseline. Additional analyses examined associations further adjusted for fasting time and for the frequency of consumption of staple foods, animal products, and fresh fruit and vegetables.

Mortality rates per 1000 person-years were estimated for mortality due to CVD, cancer, CKD, chronic liver disease and other medical causes by multiplying adjusted HRs

with 95% CIs by a common factor to make the weighted average match the CKB mortality rate.

All analyses were conducted using SAS V.9.4. Figures were produced using R V.3.6.2.

RESULTS

Among the 452,993 participants without known diabetes or other major chronic diseases at baseline, the mean (SD) age was 51 (11) years, 59% were women and mean baseline RPG was 5.9 (1.9) mmol/L (table 1). Higher RPG was associated with older age, higher prevalence of poor self-reported health, and higher levels of adiposity and SBP. There were inverse associations of RPG with educational attainment, daily physical activity level and fasting time.

During ~4.9 million person-years of follow-up (median (IQR) 11 (10–12)), 37,224 deaths were recorded, including 14,209 CVD, 12,680 cancer and 432 CKD deaths. A further 547 participants died due to chronic liver disease, 3422 from respiratory disease and 711 from infectious causes. Among participants included in the present analyses and without screen-detected diabetes at baseline, there were positive and log-linear associations of RPG levels with death from all-causes (online supplemental figure S1) and from mortality due to CVD, cancer, CKD and chronic liver disease, as well as other medical causes (figure 1). That is, a given absolute difference in usual RPG was associated with the same proportional difference in mortality risk throughout the RPG range studied. These associations extended down to a usual RPG level of at least 5.1 mmol/L, with no evidence of a threshold. There were similar strengths of association of RPG with all-cause (HR 1.14 (95% CI 1.12 to 1.16) per 1.0 mmol/L higher usual RPG) and overall CVD (1.16 (1.12 to 1.19)) mortality, as well as mortality due to major CVD types (IHD: 1.19 (1.13 to 1.24); stroke: 1.14 (1.09 to 1.19)) (figure 2). The slope of these associations remained unchanged at higher RPG levels, such that participants with screen-detected diabetes (baseline RPG ≥ 11.1 mmol/L) had HR of 1.93 (95% CI 1.84 to 2.04) and 2.11 (1.95 to 2.28) for all-cause and CVD mortality, respectively, when compared with participants with a usual RPG level <5.1 mmol/L. There was a somewhat weaker association of RPG with mortality due to cancer; each 1.0 mmol/L higher usual RPG was associated with 12% (HR 1.12 (95% CI 1.09 to 1.16)) higher risk (figure 1). The relatively small number of deaths due to individual cancer types limits inferences regarding their associations (online supplemental figure S2). However, there appeared to be a relatively strong positive and log-linear association of usual RPG with mortality from stomach cancer (1.21 (1.11 to 1.31)). The association with overall cancer mortality attenuated at the highest RPG levels (ie, among participants with screen-detected diabetes) (HR 1.42 (1.28 to 1.57)) and after exclusion of deaths occurring within the first 3 years of follow-up (1.09 (1.05 to 1.13) per 1.0 mmol/L higher usual RPG)

Table 1 Characteristics of study participants by level of baseline random plasma glucose

Characteristics*	Random plasma glucose (mmol/L)							Total
	<4.8	4.8–5.2	5.3–5.7	5.8–6.4	6.5–7.5	7.6–11.0	>11.0	
Participants, n	81,915	92,458	91,578	88,270	57,837	33,074	7861	452,993
Mean random plasma glucose (SD), mmol/L	4.3 (0.7)	5.0 (0.7)	5.5 (0.7)	6.1 (0.7)	6.9 (0.7)	8.5 (0.7)	16.0 (0.7)	5.9 (1.9)
Mean fasting time (SD), hours	5.2 (4.7)	6.2 (4.7)	5.7 (4.7)	4.5 (4.7)	3.2 (4.7)	2.7 (4.7)	3.2 (4.7)	4.9 (4.9)
Mean age (SD), years	49 (10)	50 (10)	51 (10)	52 (10)	54 (10)	55 (10)	56 (10)	51 (11)
Women, %	49	57	62	64	64	60	58	59
Poor self-reported health, %	8	8	8	9	10	10	11	9
Socioeconomic and lifestyle factors								
Urban resident, %	32	43	47	47	45	48	51	43
6+ years education, %	57	52	49	46	44	42	41	49
Ever regular smoking, %								
Men	76	75	74	74	74	74	75	75
Women	2	3	3	3	3	4	5	3
Ever regular drinking, %								
Men	38	42	43	43	42	43	45	42
Women	2	3	3	3	3	3	3	3
Mean physical activity (SD), MET-h/day	23 (14)	23 (14)	22 (14)	21 (14)	20 (14)	19 (14)	17 (14)	22 (14)
Medications at baseline, %								
Statin	2	2	2	2	2	2	2	2
Aspirin	8	7	7	8	9	9	8	8
Anti-hypertensive	48	43	44	45	48	52	49	46
Anthropometry and physical measurements, mean (SD)								
BMI, kg/m ²	23 (3)	23 (3)	24 (3)	24 (3)	24 (3)	24 (3)	25 (3)	24 (3)
Waist circumference, cm	78 (9)	79 (9)	80 (9)	80 (9)	81 (9)	83 (9)	86 (9)	80 (10)
Hip circumference, cm	90 (7)	91 (7)	91 (7)	91 (7)	91 (7)	92 (7)	92 (7)	91 (7)
SBP, mm Hg	128 (21)	129 (21)	130 (21)	131 (21)	132 (21)	136 (21)	142 (21)	130 (21)

P values for tests for trend across RPG categories <0.001 for all characteristics.

*Standardized to age, sex and study area structure of the population.

BMI, body mass index; MET-h/day, metabolic equivalent of task hours per day; SBP, systolic blood pressure.

(online supplemental table S2). With the exception of stronger associations of RPG with CVD mortality (online supplemental figure S3) at younger ages (p trend=0.01), there was no clear heterogeneity in the associations with all-cause (online supplemental figure S4), CVD or cancer mortality (online supplemental figure S5) across major population subgroups or study areas (online supplemental figure S6).

There were strong positive log-linear associations of RPG with mortality due to CKD and chronic liver disease (figure 1) and largely consistent associations with mortality due to subtypes of chronic liver disease (online supplemental figure S7). Throughout the full

glycemic range (extending up to usual RPG levels of at least 11.7 mmol/L), each 1.0 mmol/L higher usual RPG was associated with 44% higher risk of CKD mortality (HR 1.44 (95% CI 1.22 to 1.70)). This association persisted, but was moderately attenuated (1.34 (1.11 to 1.63)), after exclusion of participants who developed incident diabetes ($n=21\,548$) during follow-up (online supplemental table S2). There was a similar association of RPG with death due to chronic liver disease (1.45 (1.26 to 1.66)). In contrast, however, the risk among participants with screen-detected diabetes was comparatively lower (2.31 (1.55 to 3.45)) than would be expected based on this association (figure 1). Exclusion of the

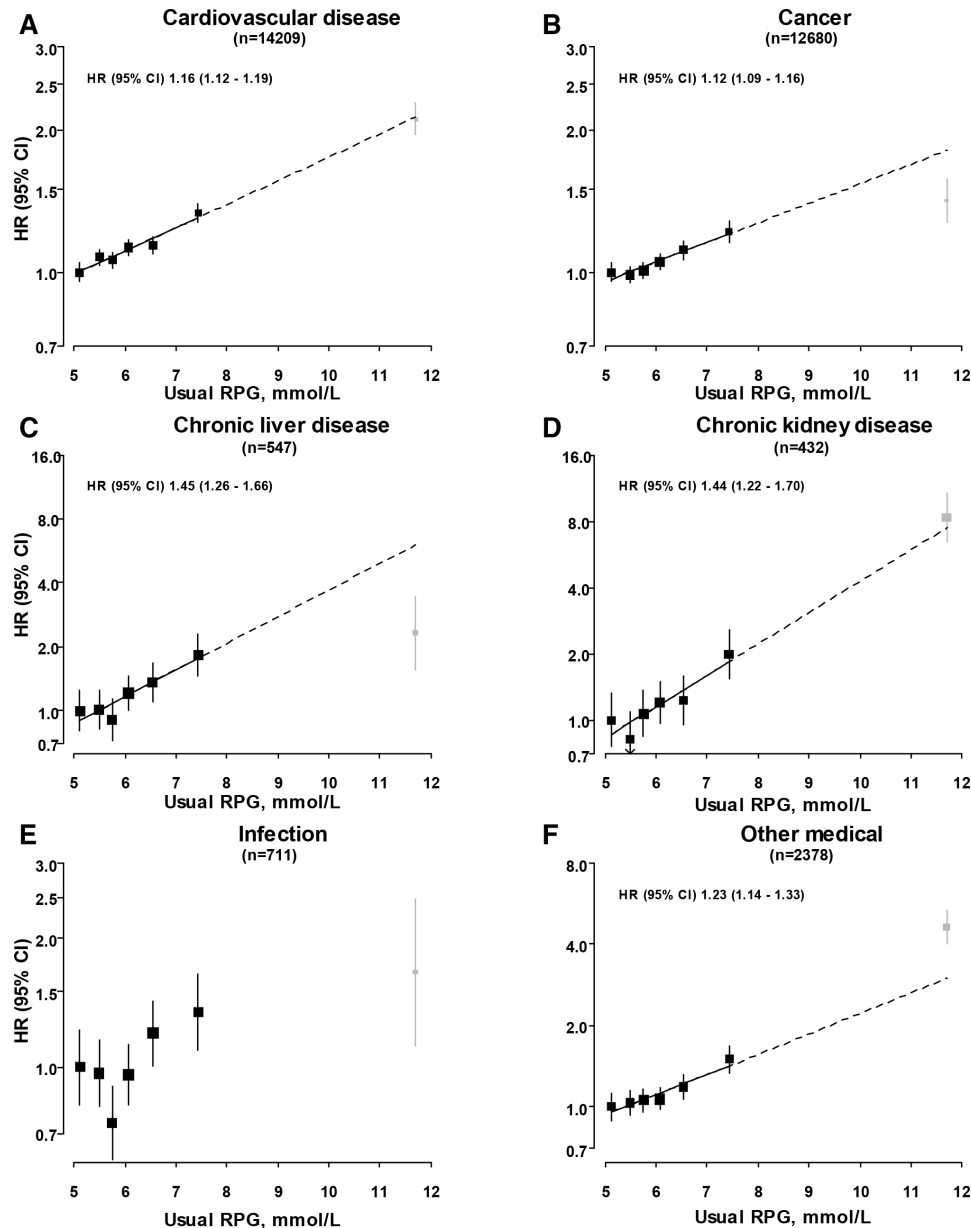


Figure 1 Associations of usual random plasma glucose with mortality from selected major diseases. HRs are presented stratified by age-at-risk, sex and study area, and adjusted for education, smoking, alcohol, physical activity, body mass index, waist and hip circumference, and systolic blood pressure. HRs are plotted against mean usual RPG level in each category. Squares represent the HR, with area inversely proportional to the variance of the log HR. Grey squares represent the HR among participants with screen-detected diabetes (baseline RPG ≥ 11.1 mmol/L). Vertical lines indicate the 95% CI. RPG, random plasma glucose.

first 3 years of follow-up attenuated the association of usual RPG with chronic liver disease mortality (n=406 cases; 1.32 (1.12 to 1.56)) (online supplemental table S2).

An apparent J-shaped association was observed between RPG levels and risk of mortality from infectious causes, with lowest risk at a usual RPG of ~ 5.8 mmol/L (figure 1). There were no clear associations of RPG levels with mortality from respiratory disease (online supplemental figure S8) or from external causes (HR 1.03 (95% CI 0.96 to 1.10) per 1.0 mmol/L higher usual RPG) (online supplemental figure S1).

The observed associations of RPG with major cause-specific mortality persisted after exclusion of participants from Zhejiang province (where participants were asked to fast prior to blood sampling), or with poor self-rated health at baseline (online supplemental table S2). Similarly, the associations remained largely unchanged after additional adjustment for fasting time and, separately, dietary variables.

Figure 3 shows absolute mortality rates due to six major disease types according to usual RPG levels. At all RPG levels, CVD accounted for the highest mortality rate, followed by cancer. CKD, chronic liver disease and

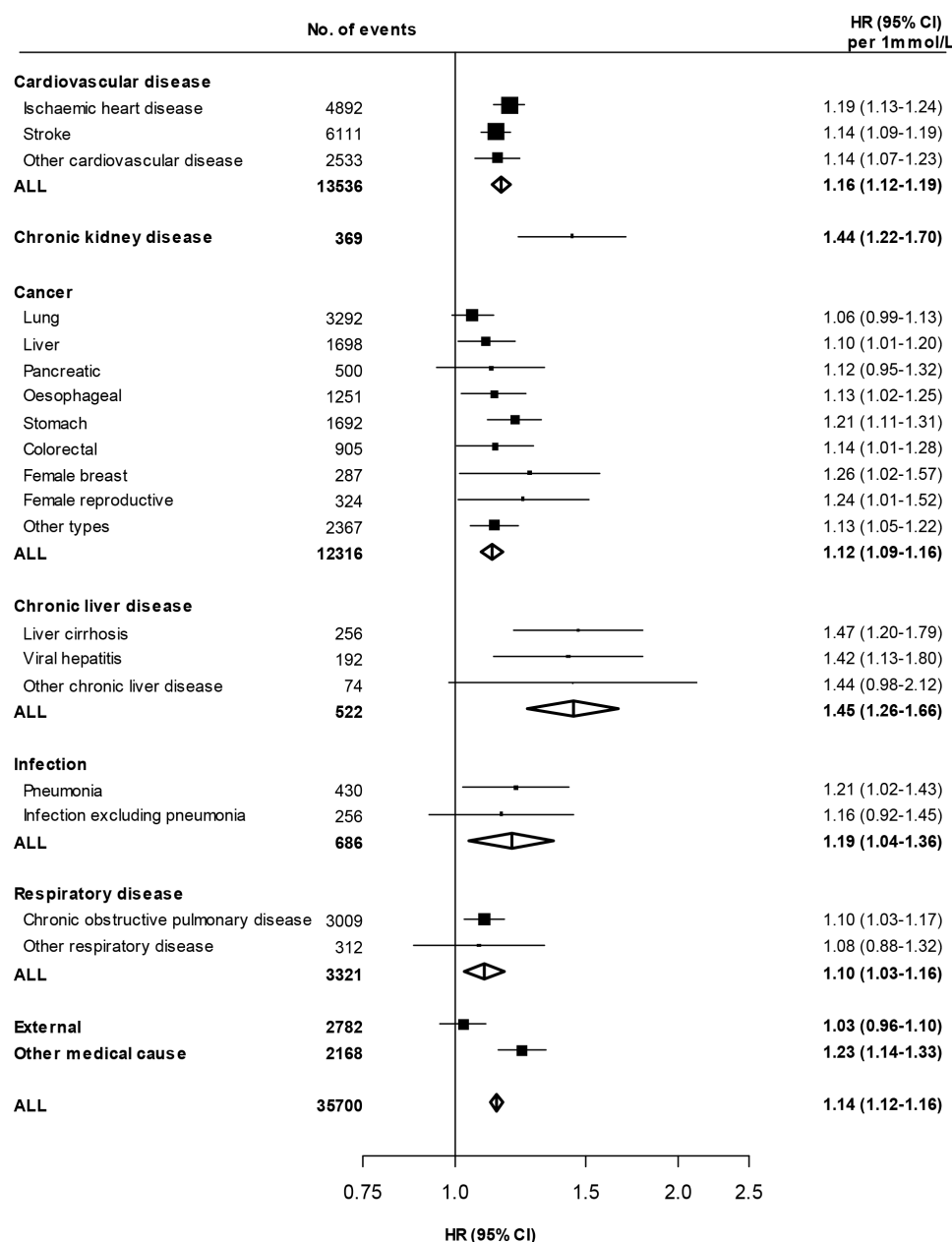


Figure 2 Associations of usual random plasma glucose with mortality from specific diseases and disease types. HRs are calculated per 1.0 mmol/L higher usual random plasma glucose. Results are stratified by age-at-risk, sex and study area and adjusted for education, smoking, alcohol, physical activity, body mass index, waist and hip circumference, and systolic blood pressure, except where the variable of interest. Participants with screen-detected diabetes at baseline are excluded. Squares represent the HR with area inversely proportional to the variance of the log HR. Horizontal lines represent the corresponding 95% CI. Open diamonds represent the overall HR for disease categories and their 95% CI. RPG, random plasma glucose.

infectious disease mortality rates were similar but significantly lower than those for CVD and cancer, and rates of mortality due to CKD increased at usual RPG levels ≥ 7.4 mmol/L.

CONCLUSIONS

In this large prospective study of Chinese adults without known diabetes, each higher level of circulating RPG was associated with higher risk of mortality from various vascular and non-vascular diseases. There were positive and log-linear associations between usual RPG and

mortality from CVD, CKD, chronic liver disease, cancer and all causes, extending down to at least usual RPG of 5.1 mmol/L, a level well below the diagnostic threshold for diabetes. Among participants without known or screen-detected diabetes at baseline, each 1.0 mmol/L higher usual RPG was associated with 12%–45% higher risks of mortality due to these causes. Moreover, these associations persisted after excluding participants who developed diabetes during follow-up. Mortality rates associated with RPG were highest for CVD and cancer throughout the glycemic range examined.

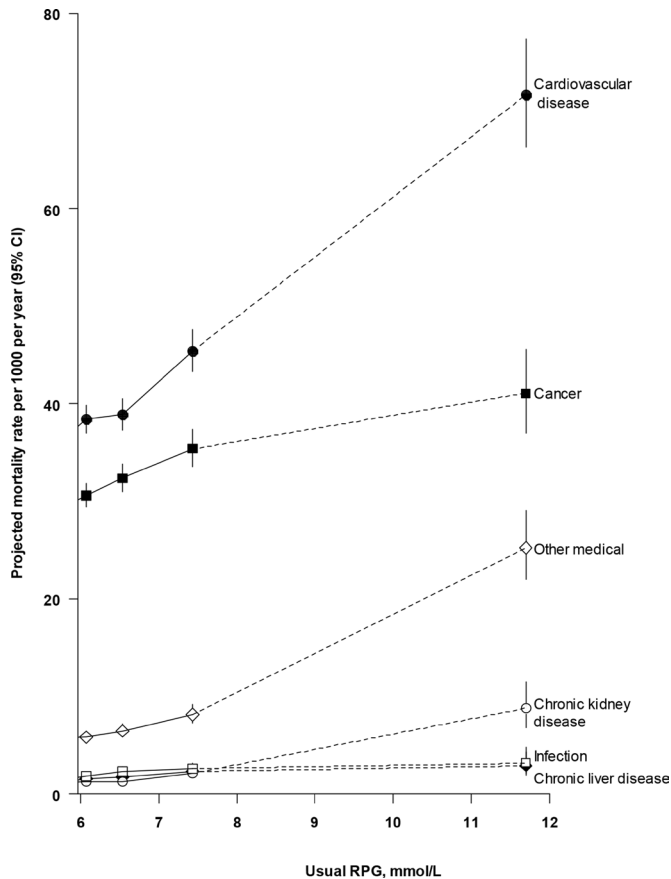


Figure 3 Projected absolute mortality rates from selected major diseases by levels of usual random plasma glucose. Mortality rates are adjusted for age, sex, region, education, smoking, alcohol, physical activity, body mass index, waist and hip circumference, and systolic blood pressure and are multiplied by a common factor (ie, floated) to make the weighted average match the China Kadoorie Biobank mortality rate. 95% CIs for floated rates reflect uncertainty in the log risk for each single rate. RPG, random plasma glucose.

Previous large prospective studies have demonstrated positive associations between plasma glucose levels and risk of all-cause mortality, but there were differences in the shape of the associations.^{9 23–25} In contrast with the continuous positive association throughout the full glycemic range in our study, both the Korean Metabolic Risk Factor (KOMERIT) study, based on routinely collected health insurance data for ~12.5 million participants (~0.6 million deaths),³ and the predominantly Western population Emerging Risk Factors Collaboration (ERFC) individual participant data meta-analysis (including ~170,000 participants)⁴ observed J-shaped associations between baseline fasting plasma glucose levels and the risk of all-cause mortality. These studies both found approximately log-linear positive relationships at fasting plasma glucose levels above ~5.5 mmol/L (consistent with reported higher all-cause mortality risk among individuals with pre-diabetes²⁶). The relatively higher mortality risks at the lowest fasting plasma glucose levels might reflect statistical artifact due to small

numbers of deaths. Alternatively, it may reflect effects of residual reverse causality. Although both studies excluded participants with prior diabetes, the KOMERIT study did not exclude participants with other chronic diseases³ and the ERFC analyses excluded only those with prior CVD.⁴ On the other hand, the contrasting association when compared with CKB may be due to use of different glycemic measures.

The continuous positive relationship between RPG and CVD mortality in the present study is consistent with associations with incident major CVD in CKB,⁶ and with the association of fasting plasma glucose levels in the Asia Pacific Cohort Studies Collaboration individual participant data meta-analysis.⁷ This latter study, including 240,000 participants from 13 prospective studies, found a positive log-linear association with CVD mortality extending down to a usual fasting plasma glucose of at least 4.9 mmol/L.⁷ In contrast, analyses from the ERFC⁴ and the Korean Cancer Prevention Study (KCPS) (including ~1.2 million participants)⁸ showed J-shaped associations of fasting plasma glucose with CVD and atherosclerotic CVD mortality, respectively. Thresholds in these associations were observed at baseline fasting plasma glucose levels of 5.0–5.6 mmol/L, again possibly reflecting comparatively small numbers of deaths at the lowest fasting plasma glucose levels. Despite the apparent differences in the associations at the lower end of the glycemic range, in combination, these studies support an association of glycemia with CVD mortality risk below diabetes diagnostic thresholds, consistent with reported higher CVD risks associated with pre-diabetes,^{26 27} and with genetic studies suggesting a causal relationship of non-diabetic glycemia with atherosclerotic CVD.^{28 29}

We demonstrated a continuous positive association between RPG and mortality due to CKD, which was stronger than that with CVD mortality, and which persisted after exclusion of participants who developed diabetes during follow-up. Although a positive association of glycemia with risk of CKD (largely renal microvascular disease) has been observed in people with diabetes,³⁰ to our knowledge, this is the first study to observe an association with CKD mortality among individuals without known diabetes, independent of blood pressure and adiposity. With supportive evidence from a recent genetic study,³¹ this is of interest given the ongoing debate regarding the relevance of the diabetes diagnostic threshold to microvascular disease risk,^{32 33} and future investigation of the association with more refined CKD endpoints will be of interest. There was a strong association between usual RPG and mortality due to chronic liver disease, comparable to that with CKD mortality. However, attenuation of this association after exclusion of the first 3 years of follow-up suggests there may be residual reverse causality, possibly reflecting incomplete understanding of chronic liver disease natural history and etiological pathways linking non-alcoholic fatty liver disease with cardiometabolic diseases and their risk factors.

Consistent with our study findings, the prospective KCPS study reported a positive log-linear association of fasting plasma glucose with cancer mortality, based on ~26,000 cancer deaths.⁵ These contrast with the J-shaped association of fasting plasma glucose in the ERFC. However, this latter study included a much smaller number of cancer deaths ($n=12,370$).⁴ In combination with reported higher risks of overall and certain type-specific cancer mortality risks in diabetes,^{2,34} these findings lend support to a role for glycemia as a risk factor for cancer mortality. The comparatively lower cancer mortality risk among individuals with screen-detected diabetes in the present study, and the qualitatively similar findings in the ERFC analyses, might reflect reduced cancer risks reported with certain diabetes medications (eg, metformin).³⁵ However, lack of data on the use of anti-hyperglycemic agents during follow-up precludes further investigation of this phenomenon. The current and previous studies have included too few cancer deaths to robustly investigate the associations of plasma glucose levels with mortality from specific cancer types,^{4,5} and findings to-date have been inconsistent.

This is the first prospective study to examine the associations of RPG with risks of cause-specific mortality. Although RPG is subject to greater intraindividual variation than other glycemic indicators (eg, fasting plasma glucose, HbA1c),^{7,36} additional adjustment for fasting time did not appreciably alter the shape or strength of the observed associations, consistent with the small proportion of variation in RPG levels accounted for by fasting time.⁶ Measurement of RPG levels is more practical, and, since for the majority of the time individuals do not exist in a fasting state, is arguably more relevant. In combination, these considerations highlight the value of RPG as a glycemic marker within the context of large-scale population-based studies.

Our study has several strengths, including the large study population, low loss to follow-up, and robust ascertainment of cause of death over a >10-year period. These enabled precise and reliable estimates of the independent associations of RPG with cause-specific mortality and detailed assessment of the shape of these associations. Furthermore, repeat RPG measurements allowed adjustment for regression dilution bias. Finally, the ability to consider separately participants with screen-detected diabetes at baseline, or to exclude those who developed incident diabetes during follow-up, provides confidence that the findings do not simply reflect the association of higher RPG levels with higher risk of future diabetes. However, the study has limitations. The small number of deaths for some endpoints resulted in imprecise estimates. Furthermore, it was not possible to adjust for other potentially relevant blood-based measures (eg, lipids), so the presented risk estimates may be subject to residual confounding. Finally, given the observational nature of the study, and the current lack of large-scale genetic data in CKB, causality cannot be inferred.

In summary, among participants without diabetes, there were positive log-linear associations of RPG levels with CVD, CKD, chronic liver disease, cancer and all-cause mortality, which extended throughout the full glycemic range examined and persisted after excluding those who developed diabetes during follow-up. This provides potential etiological insights and suggests glycemia, beyond its association with diabetes, may provide useful information for prediction of mortality risks. The causal nature of many of these associations is unclear. However, if established, despite the relatively weak associations of RPG with mortality risks, population level reductions in glycemia could contribute significantly to reducing mortality, and in particular mortality due to CVD and cancer.

Author affiliations

¹Nuffield Department of Population Health, University of Oxford, Oxford, UK

²Medical Research Council Population Health Research Unit at the University of Oxford, Oxford, UK

³Fuwai Hospital Chinese Academy of Medical Sciences, National Center for Cardiovascular Diseases, Fuwai Hospital, Beijing, China

⁴NCDs Prevention and Control Department, Liuzhou Centre for Disease Control and Prevention, Guangxi, China

⁵Chinese Academy of Medical Sciences, Beijing, China

⁶Department of Epidemiology and Biostatistics, School of Public Health, Peking University, Beijing, China

⁷Peking University Center for Public Health and Epidemic Preparedness & Response, Peking University, Beijing, China

⁸China National Center for Food Safety Risk Assessment, Beijing, China

⁹UKM Medical Molecular Biology Institute (UMBI), Universiti Kebangsaan Malaysia, Kuala Lumpur, Malaysia

Acknowledgements The chief acknowledgment is to the participants, the project staff, and the China National Centre for Disease Control and Prevention (CDC) and its regional offices for access to death and disease registries. The Chinese National Health Insurance scheme provides electronic linkage to all hospital admission data.

Contributors FB, JH, ZC, and LL had full access to the data. All authors were involved in study design, conduct, long-term follow-up, analysis of data, interpretation, or writing the report. ZC is the guarantor of this work and takes responsibility for the integrity of the data and final responsibility for the decision to submit for publication.

Funding The baseline survey and the first re-survey were supported by a research grant from the Kadoorie Charitable Foundation in Hong Kong. The long-term continuation of the project is supported by program grants from the UK Wellcome Trust (088158/Z/09/Z, 104085/Z/14/Z, 212946/Z/18/Z), the Chinese Ministry of Science and Technology (21BAI09B01, 2012–2014), and the Chinese National Natural Science Foundation (81390540, 81390541, 81390544, 2014–2018) and the National Key Research and Development Program of China (2016YFC0900500, 2016YFC0900501, 2016YFC0900504, 2016YFC1303904, 2016–2021). The British Heart Foundation, Medical Research Council and Cancer Research UK provide core funding to the Oxford CTSU. SL reports grants from the Medical Research Council (MRC) and research funding from the US Centers for Disease Control and Prevention Foundation (with support from Amgen) during the conduct of the study.

Competing interests None declared.

Patient consent for publication Not applicable.

Ethics approval Ethical approval was obtained from the relevant international, national and local ethics committees. All participants provided written informed consent.

Provenance and peer review Not commissioned; externally peer reviewed.

Data availability statement Data are available upon reasonable request. The China Kadoorie Biobank (CKB) is a global resource for the investigation of lifestyle, environmental, blood biochemical and genetic factors as determinants of common diseases. The CKB study group is committed to making the cohort data available

to the scientific community in China, the UK and worldwide to advance knowledge about the causes, prevention and treatment of disease. For detailed information on what data is currently available to open access users and how to apply for it, visit: <http://www.ckbiobank.org/site/Data+Access>. Researchers who are interested in obtaining the raw data from the China Kadoorie Biobank study that underlines this paper should contact ckbaccess@ndph.ox.ac.uk. A research proposal will be requested to ensure that any analysis is performed by bona fide researchers and - where data is not currently available to open access researchers - is restricted to the topic covered in this paper.

Supplemental material This content has been supplied by the author(s). It has not been vetted by BMJ Publishing Group Limited (BMJ) and may not have been peer-reviewed. Any opinions or recommendations discussed are solely those of the author(s) and are not endorsed by BMJ. BMJ disclaims all liability and responsibility arising from any reliance placed on the content. Where the content includes any translated material, BMJ does not warrant the accuracy and reliability of the translations (including but not limited to local regulations, clinical guidelines, terminology, drug names and drug dosages), and is not responsible for any error and/or omissions arising from translation and adaptation or otherwise.

Open access This is an open access article distributed in accordance with the Creative Commons Attribution 4.0 Unported (CC BY 4.0) license, which permits others to copy, redistribute, remix, transform and build upon this work for any purpose, provided the original work is properly cited, a link to the licence is given, and indication of whether changes were made. See: <https://creativecommons.org/licenses/by/4.0/>.

ORCID iDs

Fiona Bragg <http://orcid.org/0000-0002-9181-6886>
Huidong Du <http://orcid.org/0000-0002-9814-0049>
Canqing Yu <http://orcid.org/0000-0002-0019-0014>

REFERENCES

- Saeedi P, Salpea P, Karuranga S, *et al*. Mortality attributable to diabetes in 20-79 years old adults, 2019 estimates: Results from the International Diabetes Federation Diabetes Atlas, 9th edition. *Diabetes Res Clin Pract* 2020;162:108086.
- Bragg F, Holmes MV, Iona A, *et al*. Association between diabetes and cause-specific mortality in rural and urban areas of China. *JAMA* 2017;317:280-9.
- Yi S-W, Park S, Lee Y-H, *et al*. Association between fasting glucose and all-cause mortality according to sex and age: a prospective cohort study. *Sci Rep* 2017;7:8194.
- Rao Kondapally Seshasai S, Kaptoge S, Thompson A, *et al*. Diabetes mellitus, fasting glucose, and risk of cause-specific death. *N Engl J Med* 2011;364:829-41.
- Jee SH, Ohrr H, Sull JW, *et al*. Fasting serum glucose level and cancer risk in Korean men and women. *JAMA* 2005;293:194-202.
- Bragg F, Li L, Bennett D, *et al*. Association of random plasma glucose levels with the risk for cardiovascular disease among Chinese adults without known diabetes. *JAMA Cardiol* 2016;1:813-23.
- Lawes CMM, Parag V, Bennett DA, *et al*. Blood glucose and risk of cardiovascular disease in the Asia Pacific region. *Diabetes Care* 2004;27:2836-42.
- Park C, Guallar E, Linton JA, *et al*. Fasting glucose level and the risk of incident atherosclerotic cardiovascular diseases. *Diabetes Care* 2013;36:1988-93.
- Kadowaki S, Okamura T, Hozawa A, *et al*. Relationship of elevated casual blood glucose level with coronary heart disease, cardiovascular disease and all-cause mortality in a representative sample of the Japanese population. NIPPON DATA80. *Diabetologia* 2008;51:575-82.
- Qiao Q, Jousilahti P, Eriksson J, *et al*. Predictive properties of impaired glucose tolerance for cardiovascular risk are not explained by the development of overt diabetes during follow-up. *Diabetes Care* 2003;26:2910-4.
- Zhou XH, Qiao Q, Zethelius B, *et al*. Diabetes, prediabetes and cancer mortality. *Diabetologia* 2010;53:1867-76.
- Wang L, Gao P, Zhang M, *et al*. Prevalence and ethnic pattern of diabetes and prediabetes in China in 2013. *JAMA* 2017;317:2515-23.
- Xu Y, Wang L, He J, *et al*. Prevalence and control of diabetes in Chinese adults. *JAMA* 2013;310:948-59.
- Naghavi M, Abajobir AA, Abbafati C, *et al*. Global, regional, and national age-sex specific mortality for 264 causes of death, 1980-2016: a systematic analysis for the global burden of disease study 2016. *The Lancet* 2017;390:1151-210.
- Chen Z, Lee L, Chen J, *et al*. Cohort profile: the Kadoorie study of chronic disease in China (KSCDC). *Int J Epidemiol* 2005;34:1243-9.
- Chen Z, Chen J, Collins R, *et al*. China Kadoorie Biobank of 0.5 million people: survey methods, baseline characteristics and long-term follow-up. *Int J Epidemiol* 2011;40:1652-66.
- Yang GH, Murray CJL, Zhang Z. *Exploring adult mortality in China: levels, patterns and causes*. Beijing: Hua Xia Press, 1991.
- Yang G, Rao C, Ma J, *et al*. Validation of verbal autopsy procedures for adult deaths in China. *Int J Epidemiol* 2006;35:741-8.
- American Diabetes Association. Diagnosis and classification of diabetes mellitus. *Diabetes Care* 2010;33 Suppl 1:S62-9.
- Plummer M. Improved estimates of floating absolute risk. *Stat Med* 2004;23:93-104.
- Rosner B, Willett WC, Spiegelman D. Correction of logistic regression relative risk estimates and confidence intervals for systematic within-person measurement error. *Stat Med* 1989;8:1051-69. discussion 1071-1053.
- Fibrinogen Studies Collaboration, Wood AM, White I, *et al*. Regression dilution methods for meta-analysis: assessing long-term variability in plasma fibrinogen among 27,247 adults in 15 prospective studies. *Int J Epidemiol* 2006;35:1570-8.
- Zhou L, Mai J-Z, Li Y, *et al*. Fasting glucose and its association with 20-year all-cause and cause-specific mortality in Chinese general population. *Chronic Dis Transl Med* 2019;5:89-96.
- Huang Y, Cai X, Chen P, *et al*. Associations of prediabetes with all-cause and cardiovascular mortality: a meta-analysis. *Ann Med* 2014;46:684-92.
- Mongraw-Chaffin M, LaCroix AZ, Sears DD, *et al*. A prospective study of low fasting glucose with cardiovascular disease events and all-cause mortality: the women's health Initiative. *Metabolism* 2017;70:116-24.
- Cai X, Zhang Y, Li M, *et al*. Association between prediabetes and risk of all cause mortality and cardiovascular disease: updated meta-analysis. *BMJ* 2020;370:m2297.
- Cai X, Liu X, Sun L, *et al*. Prediabetes and the risk of heart failure: a meta-analysis. *Diabetes Obes Metab* 2021;23:1746-53.
- Merino J, Leong A, Posner DC, *et al*. Genetically driven hyperglycemia increases risk of coronary artery disease separately from type 2 diabetes. *Diabetes Care* 2017;40:687-93.
- Rasmussen-Torvik LJ, Li M, Kao WH, *et al*. Association of a fasting glucose genetic risk score with subclinical atherosclerosis. *Diabetes* 2011;60:331-5.
- UK Prospective Diabetes Study (UKPDS) Group. Intensive blood-glucose control with sulphonylureas or insulin compared with conventional treatment and risk of complications in patients with type 2 diabetes (UKPDS 33). *Lancet* 1998;352:837-53.
- Emanuelsson F, Marott S, Tybjaerg-Hansen A, *et al*. Impact of glucose level on micro- and macrovascular disease in the general population: a Mendelian randomization study. *Diabetes Care* 2020;43:894-902.
- Wong TY, Liew G, Tapp RJ, *et al*. Relation between fasting glucose and retinopathy for diagnosis of diabetes: three population-based cross-sectional studies. *Lancet* 2008;371:736-43.
- Carlsson LMS, Sjöholm K, Karlsson C, *et al*. Long-Term incidence of microvascular disease after bariatric surgery or usual care in patients with obesity, stratified by baseline glycaemic status: a post-hoc analysis of participants from the Swedish obese subjects study. *Lancet Diabetes Endocrinol* 2017;5:271-9.
- Chen Y, Wu F, Saito E, *et al*. Association between type 2 diabetes and risk of cancer mortality: a pooled analysis of over 771,000 individuals in the Asia Cohort Consortium. *Diabetologia* 2017;60:1022-32.
- Heckman-Stoddard BM, DeCensi A, Sahasrabudhe VV, *et al*. Repurposing metformin for the prevention of cancer and cancer recurrence. *Diabetologia* 2017;60:1639-47.
- Emerging Risk Factors Collaboration, Sarwar N, Gao P, *et al*. Diabetes mellitus, fasting blood glucose concentration, and risk of vascular disease: a collaborative meta-analysis of 102 prospective studies. *Lancet* 2010;375:2215-22.

This page is intentionally left blank

Random plasma glucose levels and cause-specific mortality among Chinese adults without known diabetes: an 11-year prospective study of 450,000 people

Online-Only Supplemental Material, Table of Contents

	Page
China Kadoorie Biobank collaborative group and members	2
Table S1. ICD10 classified causes of death	3
Table S2. Sensitivity analyses of the associations of usual random plasma glucose with mortality from selected major diseases, applying additional adjustments and/or exclusions	4
Table S3. Associations of baseline random plasma glucose with mortality from selected major diseases	5
Figure S1. Associations of usual random plasma glucose with mortality from selected major diseases	6
Figure S2. Associations of usual random plasma glucose with cancer mortality	7
Figure S3. Associations of usual random plasma glucose with cardiovascular disease mortality	8
Figure S4. Associations of usual random plasma glucose with all-cause mortality in selected population subgroups	9
Figure S5. Associations of usual random plasma glucose with cancer mortality	10
Figure S6. Associations of usual random plasma glucose with all-cause, cardiovascular disease and cancer mortality by study area	11
Figure S7. Associations of usual random plasma glucose with liver disease mortality	12
Figure S8. Associations of usual random plasma glucose with respiratory disease mortality	13

China Kadoorie Biobank collaborative group and members

International Steering Committee: Junshi Chen, Zhengming Chen (PI), Robert Clarke, Rory Collins, Yu Guo, Liming Li (PI), Chen Wang, Jun Lv, Richard Peto, Robin Walters

International Co-ordinating Centre, Oxford: Daniel Avery, Fiona Bragg, Derrick Bennett, Ruth Boxall, Ka Hung Chan, Yumei Chang, Yiping Chen, Zhengming Chen, Johnathan Clarke; Robert Clarke, Huaidong Du, Zammy Fairhurst-Hunter, Hannah Fry, Wei Gan, Simon Gilbert, Alex Hacker, Parisa Hariri, Mike Hill, Michael Holmes, Pek Kei Im, Andri Iona, Maria Kakkoura, Christiana Kartsonaki, Rene Kerosi, Kuang Lin, Mohsen Mazidi, Iona Millwood, Qunhua Nie, Alfred Pozarickij, Paul Ryder, Sam Sansome, Dan Schmidt, Paul Sherliker, Rajani Sohoni, Becky Stevens, Iain Turnbull, Robin Walters, Lin Wang, Neil Wright, Ling Yang, Xiaoming Yang, Pang Yao

National Co-ordinating Centre, Beijing: Yu Guo, Xiao Han, Can Hou, Chun Li, Chao Liu, Jun Lv, Pei Pei, Canqing Yu

10 Regional Co-ordinating Centres:

Guangxi Provincial CDC: Naying Chen, Duo Liu, Zhenzhu Tang. **Liuzhou** CDC: Ningyu Chen, Qilian Jiang, Jian Lan, Mingqiang Li, Yun Liu, Fanwen Meng, Jinhui Meng, Rong Pan, Yulu Qin, Ping Wang, Sisi Wang, Liuping Wei, Liyuan Zhou. **Gansu** Provincial CDC: Caixia Dong, Pengfei Ge, Xiaolan Ren. **Maiji** CDC: Zhongxiao Li, Enke Mao, Tao Wang, Hui Zhang, Xi Zhang. **Hainan** Provincial CDC: Jinyan Chen, Ximin Hu, Xiaohuan Wang. **Meilan** CDC: Zhendong Guo, Huimei Li, Yilei Li, Min Weng, Shukuan Wu. **Heilongjiang** Provincial CDC: Shichun Yan, Mingyuan Zou, Xue Zhou. **Nangang** CDC: Ziyang Guo, Quan Kang, Yanjie Li, Bo Yu, Qinai Xu. **Henan** Provincial CDC: Liang Chang, Lei Fan, Shixian Feng, Ding Zhang, Gang Zhou. **Huixian** CDC: Yulian Gao, Tianyou He, Pan He, Chen Hu, Huarong Sun, Xukui Zhang. **Hunan** Provincial CDC: Biyun Chen, Zhongxi Fu, Yuelong Huang, Huilin Liu, Qiaohua Xu, Li Yin. **Liuyang** CDC: Huajun Long, Xin Xu, Hao Zhang, Libo Zhang. **Jiangsu** Provincial CDC: Jian Su, Ran Tao, Ming Wu, Jie Yang, Jinyi Zhou, Yonglin Zhou. **Suzhou** CDC: Yihe Hu, Yujie Hua, Jianrong Jin Fang Liu, Jingchao Liu, Yan Lu, Liangcai Ma, Aiyu Tang, Jun Zhang. **Qingdao** Qingdao CDC: Liang Cheng, Ranran Du, Ruqin Gao, Feifei Li, Shanpeng Li, Yongmei Liu, Feng Ning, Zengchang Pang, Xiaohui Sun, Xiaocao Tian, Shaojie Wang, Yaoming Zhai, Hua Zhang, Licang CDC: Wei Hou, Silu Lv, Junzheng Wang. **Sichuan** Provincial CDC: Xiaofang Chen, Xianping Wu, Ningmei Zhang, Weiwei Zhou. **Pengzhou** CDC: Xiaofang Chen, Jianguo Li, Jiaqiu Liu, Guojin Luo, Qiang Sun, Xunfu Zhong. **Zhejiang** Provincial CDC: Weiwei Gong, Ruying Hu, Hao Wang, Meng Wan, Min Yu. **Tongxiang** CDC: Lingli Chen, Qijun Gu, Dongxia Pan, Chunmei Wang, Kaixu Xie, Xiaoyi Zhang

Table S1. ICD10 classified causes of death

Category	ICD-10 codes
All-cause mortality	Any ICD-10 code
CVD	I00-I25, I28-I99, E10.5, E11.5, E12.5, E13.5, E14.5
Ischaemic heart disease	I20-I25
Stroke	I60-I64
Other CVD	I00-I15, I28-I59, I65-I99, E10.5, E11.5, E12.5, E13.5, E14.5
Respiratory disease	I26-I27, J00-J11, J20-J99
COPD	I26-I27, J40-J44
Other respiratory disease	J00-J11, J20-J39, J45-J99
Chronic liver disease	B18-B19, B25.1, K70.0-K70.9, K72.1-K74, K75.2-K75.9, P35.3 Z22.5
Liver cirrhosis	K70.3, K74
Viral hepatitis	B18-B19, B25.1
Other liver disease	K70.0-K70.2, K70.4, K70.9, K72.1-K73, K75.2-K75.9, P35.3 Z22.5
Chronic kidney disease	I12.0-I13.9, E10.2, E11.2, E12.2, E13.2, E14.2, M10.3, M32.1, N02-N05, N08.3, N11-N13, N15, N18-N19, N25-N26, N27.1, N27.9, O10.2-O10.3, R94.4, T86.1, Z94.0
Infection	A00-B17, B20-B25, B25.2-B99, J12-J18
Pneumonia	J12-J18
Other infection	A00-B17, B20-B25.0, B25.2-B99
Cancer	C00-C97
Oesophageal	C15
Stomach	C16
Colorectal	C18-C20
Liver	C22
Pancreatic	C25
Lung	C33-C34
Female breast	C50
Female reproductive	C53, C54.1, C56
Other site	C00-C14, C17, C21, C23-C24, C26-C32, C35-C49, C51-C52, C54.0, C54.2-C55, C57-C97
External	V01-Y98
Other medical	Any ICD-10 code excluding the cause-specific mortality codes listed above

COPD=chronic obstructive pulmonary disease; CVD=cardiovascular disease

Table S2. Sensitivity analyses of the associations of usual random plasma glucose with mortality from selected major diseases, applying additional adjustments and/or exclusions

	All cause			Cardiovascular disease			Cancer			Infection			Chronic liver disease			Chronic kidney disease		
	n	HR*	95% CI	n	HR*	95% CI	n	HR*	95% CI	n	HR*	95% CI	n	HR*	95% CI	n	HR*	95% CI
Main model†	35700	1.14	(1.12-1.16)	13536	1.16	(1.12-1.16)	12316	1.12	(1.09-1.16)	686	1.19	(1.04-1.36)	522	1.45	(1.26-1.66)	369	1.44	(1.22-1.70)
Additionally adjusted for dietary variables‡	35700	1.14	(1.12-1.16)	13536	1.15	(1.12-1.19)	12316	1.12	(1.08-1.16)	686	1.19	(1.04-1.36)	522	1.44	(1.25-1.66)	369	1.44	(1.22-1.70)
Additionally adjusted for fasting time	35700	1.14	(1.12-1.16)	13536	1.15	(1.11-1.18)	12316	1.13	(1.09-1.17)	686	1.20	(1.04-1.37)	522	1.45	(1.25-1.67)	369	1.45	(1.22-1.72)
Additionally excluding the first 3 years of follow-up	29698	1.12	(1.10-1.14)	11572	1.15	(1.11-1.18)	10131	1.09	(1.05-1.13)	592	1.16	(1.01-1.34)	406	1.32	(1.12-1.56)	304	1.46	(1.21-1.75)
Additionally excluding participants who developed diabetes during follow-up	33912	1.14	(1.12-1.17)	12860	1.16	(1.13-1.19)	11814	1.13	(1.10-1.17)	646	1.21	(1.05-1.39)	499	1.48	(1.28-1.72)	311	1.34	(1.11-1.63)
Additionally excluding participants from Zhejiang	34139	1.14	(1.12-1.16)	13077	1.15	(1.12-1.19)	11438	1.12	(1.08-1.16)	666	1.20	(1.05-1.37)	505	1.43	(1.23-1.65)	356	1.50	(1.27-1.78)
Additionally excluding participants with poor self-rated health	30120	1.13	(1.11-1.16)	11257	1.14	(1.10-1.18)	10952	1.11	(1.07-1.15)	595	1.15	(1.00-1.33)	432	1.44	(1.23-1.68)	315	1.32	(1.09-1.59)

*HR per 1 mmol/L higher usual random plasma glucose
†Stratified by age-at-risk, sex and study area and adjusted for education, smoking, alcohol, physical activity, body mass index, waist and hip circumference and systolic blood pressure
‡Frequency of consumption of soybean products, preserved vegetables, fresh fruit, fresh vegetables, meat, poultry, fish/seafood, fresh eggs, dairy products, rice, wheat, other staple food

Table S3. Associations of baseline random plasma glucose with mortality from selected major diseases

Baseline RPG, mmol/L	All-cause			Cardiovascular disease			Cancer			Infection			Chronic liver disease			Chronic kidney disease		
	Deaths	HR	95% CI	Deaths	HR	95% CI	Deaths	HR	95% CI	Deaths	HR	95% CI	Deaths	HR	95% CI	Deaths	HR	(95% CI)
<4.8	5663	1.00	(0.97-1.03)	2031	1.00	(0.96-1.05)	1946	1.00	(0.96-1.05)	101	1.00	(0.81-1.22)	81	1.00	(0.80-1.25)	55	1.00	(0.76-1.31)
4.8 – 5.2	6353	1.01	(0.98-1.03)	2356	1.08	(1.03-1.12)	2242	0.99	(0.95-1.03)	123	0.97	(0.81-1.16)	86	1.01	(0.82-1.25)	48	0.82	(0.62-1.09)
5.3 – 5.7	6597	1.01	(0.99-1.03)	2432	1.06	(1.02-1.11)	2362	1.01	(0.97-1.05)	102	0.74	(0.61-0.90)	78	0.91	(0.72-1.13)	66	1.07	(0.84-1.36)
5.8 – 6.4	7304	1.06	(1.03-1.08)	2829	1.13	(1.09-1.17)	2543	1.06	(1.01-1.10)	139	0.96	(0.81-1.13)	110	1.21	(1.01-1.46)	79	1.20	(0.96-1.49)
6.5 – 7.5	5617	1.11	(1.08-1.14)	2179	1.14	(1.10-1.19)	1910	1.12	(1.07-1.17)	128	1.20	(1.01-1.43)	90	1.36	(1.10-1.67)	60	1.23	(0.95-1.58)
7.6 – 11.0	4166	1.28	(1.24-1.32)	1709	1.34	(1.27-1.40)	1313	1.22	(1.16-1.29)	93	1.35	(1.09-1.65)	77	1.83	(1.46-2.29)	61	1.99	(1.54-2.56)
≥11.1	1514	1.93	(1.84-2.04)	673	2.11	(1.95-2.28)	364	1.42	(1.28-1.57)	25	1.67	(1.12-2.48)	25	2.31	(1.55-3.45)	63	8.33	(6.42-10.8)
<i>P for trend</i>			<0.001			<0.001			<0.001			0.002			<0.001			<0.001
Per 1 mmol/L*	35700	1.14	(1.12-1.16)	13536	1.16	(1.12-1.19)	12316	1.12	(1.09-1.16)	686	1.19	(1.04-1.36)	522	1.45	(1.26-1.66)	369	1.44	(1.22-1.70)

*Excluding participants with baseline RPG <11.1 mmol/L
HRs are stratified by age-at-risk, sex and study area and adjusted for education, smoking, alcohol, physical activity, body mass index, waist and hip circumference and systolic blood pressure
RPG=random plasma glucose

Figure S1. Associations of usual random plasma glucose with mortality from selected major diseases

HRs are presented stratified by age-at-risk, sex and study area and adjusted for education, smoking, alcohol, physical activity, body mass index, waist and hip circumference and systolic blood pressure. HRs are plotted against mean usual RPG level in each category. Squares represent the HR with area inversely proportional to the variance of the log HR. Grey squares represent the HR among participants with screen-detected diabetes (baseline RPG ≥ 11.1 mmol/L). Vertical lines indicate the 95% CI. CVD=cardiovascular disease, RPG=random plasma glucose.

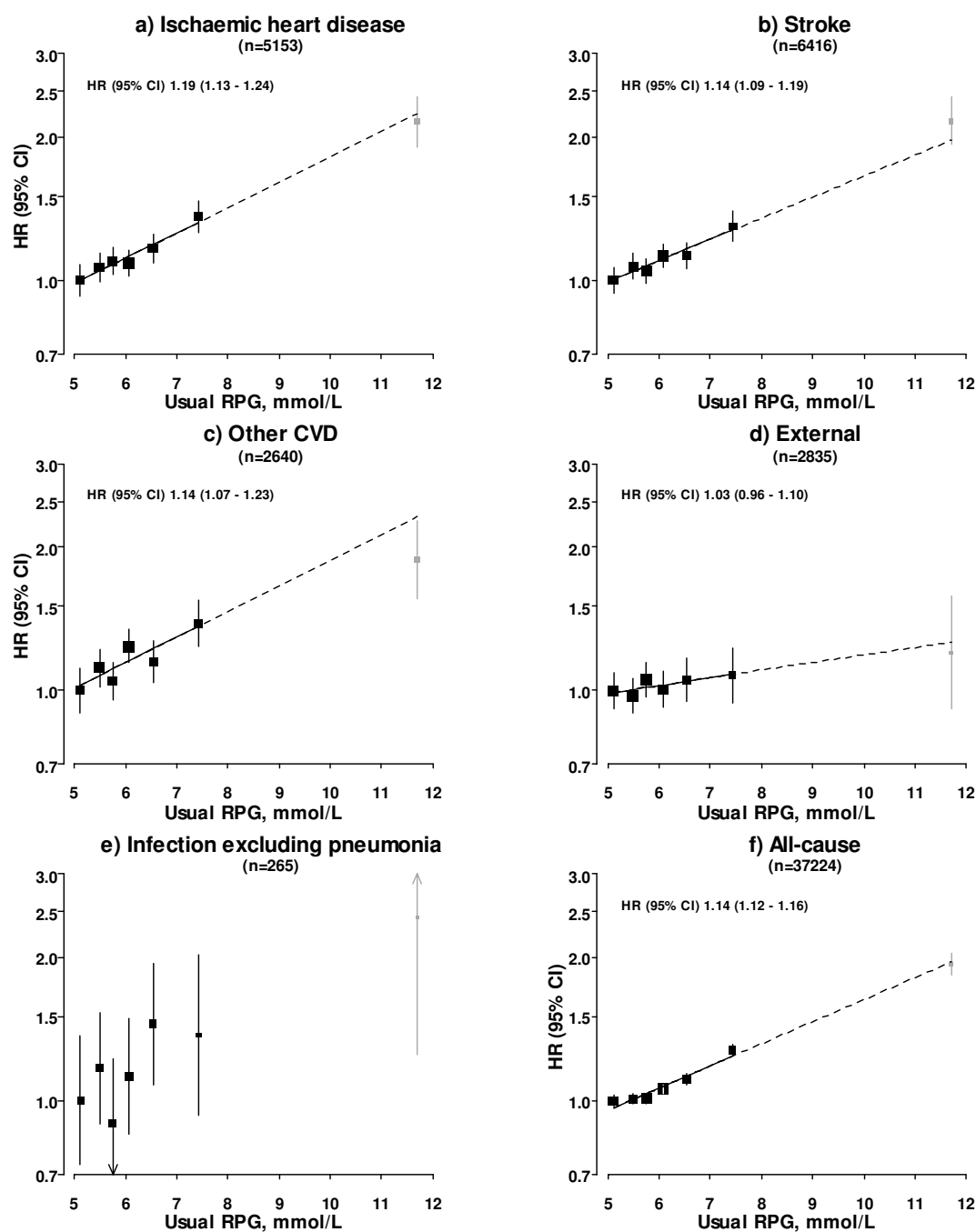


Figure S2. Associations of usual random plasma glucose with cancer mortality

HRs are presented stratified by age-at-risk, sex and study area and adjusted for education, smoking, alcohol, physical activity, body mass index, waist and hip circumference and systolic blood pressure. HRs are plotted against mean usual RPG level in each category. Squares represent the HR with area inversely proportional to the variance of the log HR. Grey squares represent the HR among participants with screen-detected diabetes (baseline RPG ≥ 11.1 mmol/L). Vertical lines indicate the 95% CI. RPG=random plasma glucose.

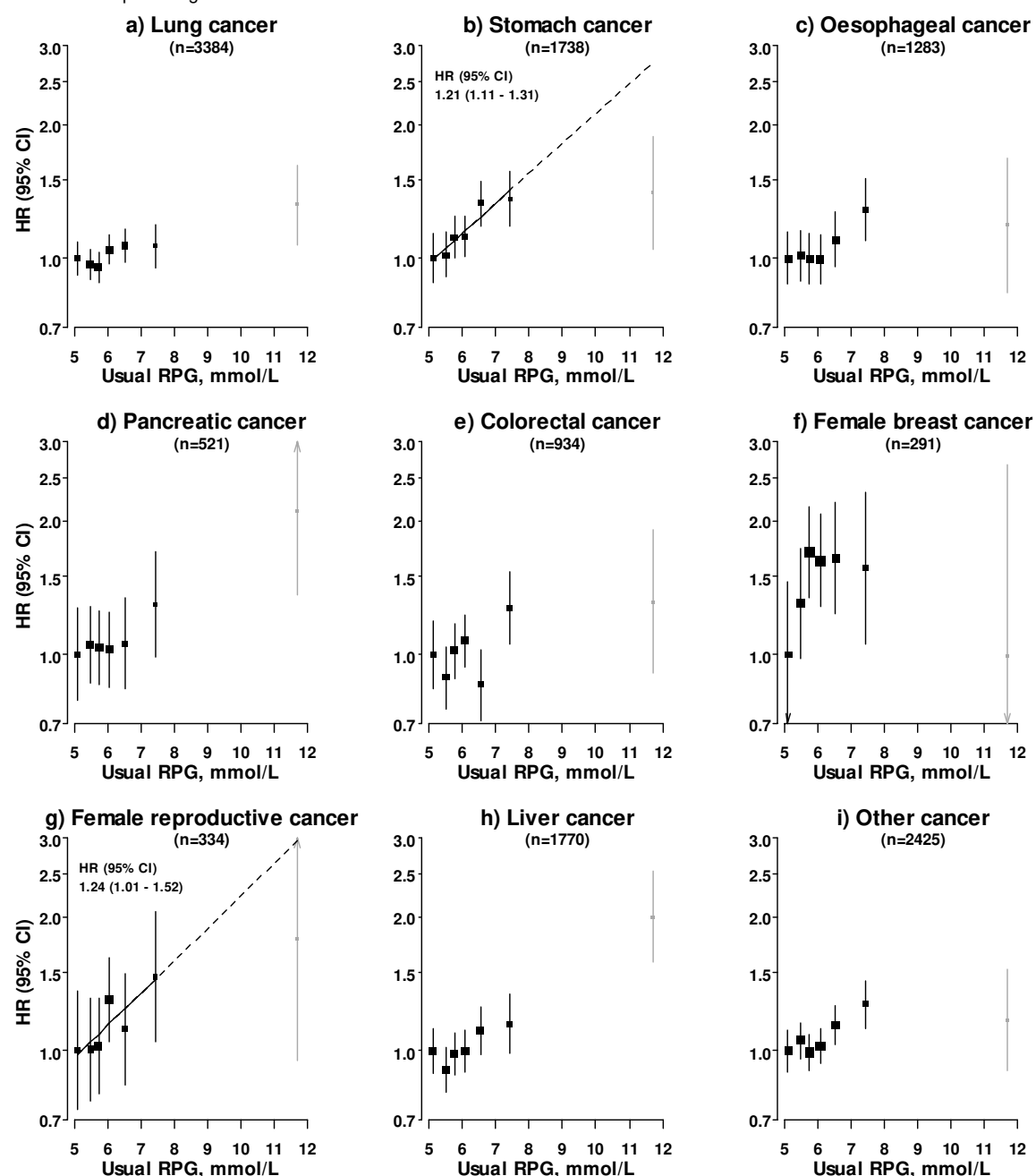


Figure S3. Associations of usual random plasma glucose with cardiovascular disease mortality

HRs are calculated per 1.0 mmol/L higher usual random plasma glucose. Results are stratified by age-at-risk, sex and study area and adjusted for education, smoking, alcohol, physical activity, body mass index, waist and hip circumference and systolic blood pressure, except where the variable of interest. Participants with screen-detected diabetes at baseline are excluded. Squares represent the HR with area inversely proportional to the variance of the log HR. Horizontal lines represent the corresponding 95% CI. The open diamond represents the overall HR and its 95% CI. BMI=body mass index; MET-h/day=metabolic equivalent of task hours per day; SBP=systolic blood pressure.

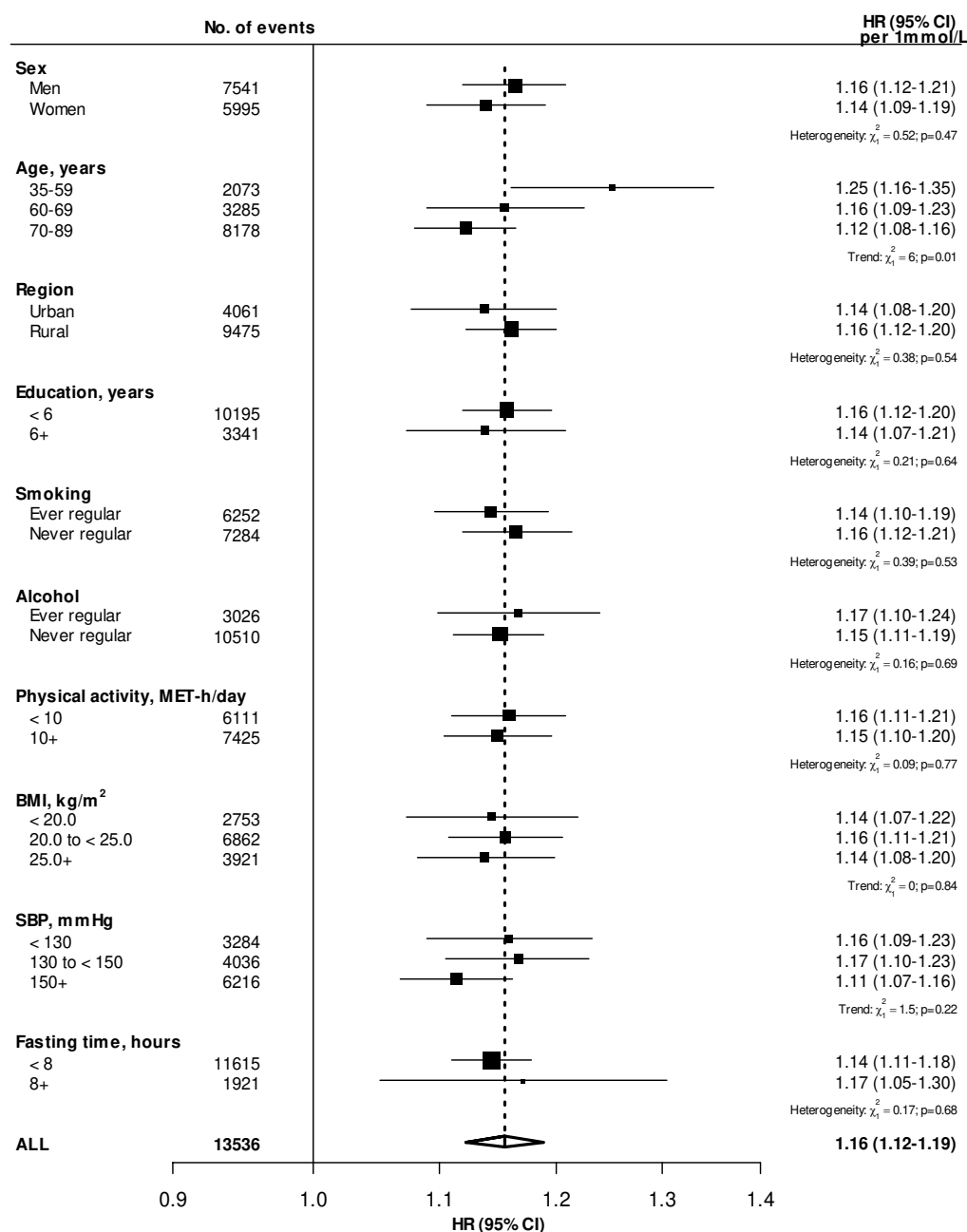


Figure S4. Associations of usual random plasma glucose with all-cause mortality in selected population subgroups

HRs are calculated per 1.0 mmol/L higher usual random plasma glucose. Results are stratified by age-at-risk, sex and study area and adjusted for education, smoking, alcohol, physical activity, body mass index, waist and hip circumference and systolic blood pressure, except where the variable of interest. Participants with screen-detected diabetes at baseline are excluded. Squares represent the HR with area inversely proportional to the variance of the log HR. Horizontal lines represent the corresponding 95% CI. The open diamond represents the overall HR and its 95% CI. BMI=body mass index; MET-h/day=metabolic equivalent of task hours per day; RPG=random plasma glucose; SBP=systolic blood pressure.

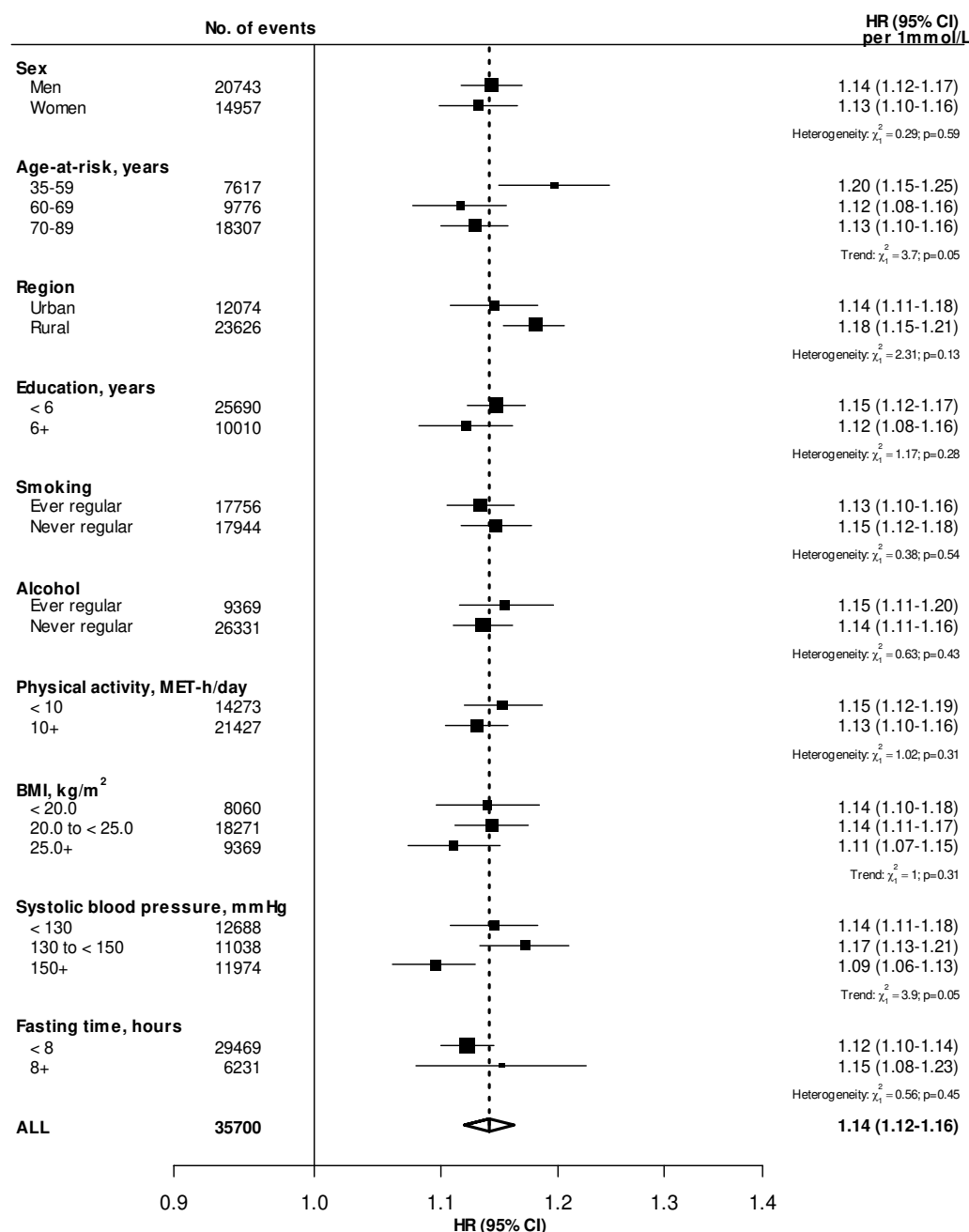


Figure S5. Associations of usual random plasma glucose with cancer mortality

HRs are calculated per 1.0 mmol/L higher usual random plasma glucose. Results are stratified by age-at-risk, sex and study area and adjusted for education, smoking, alcohol, physical activity, body mass index, waist and hip circumference and systolic blood pressure, except where the variable of interest. Participants with screen-detected diabetes at baseline are excluded. Squares represent the HR with area inversely proportional to the variance of the log HR. Horizontal lines represent the corresponding 95% CI. The open diamond represents the overall HR and its 95% CI. BMI=body mass index; MET-h/day=metabolic equivalent of task hours per day; SBP=systolic blood pressure.

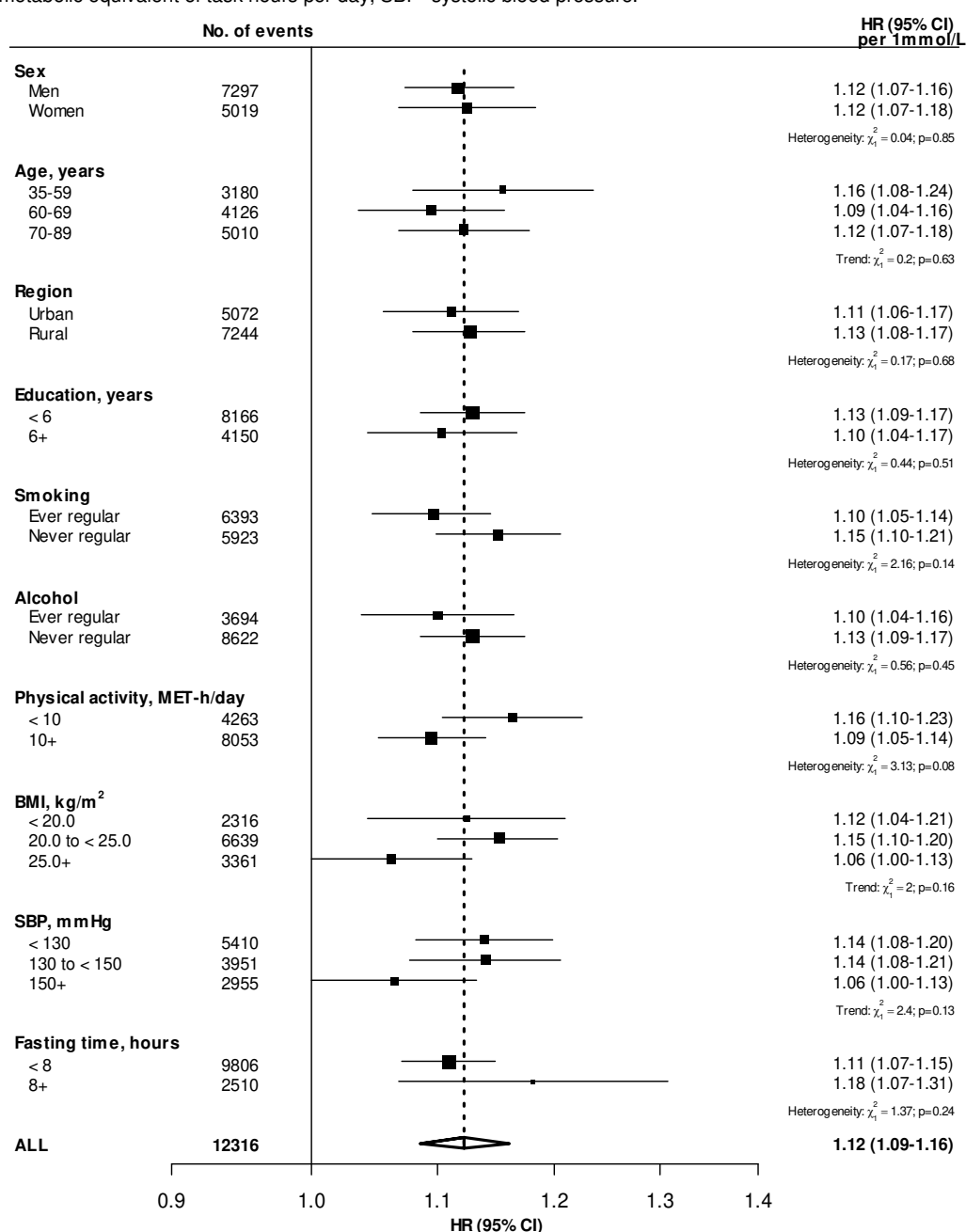


Figure S6. Associations of usual random plasma glucose with all-cause, cardiovascular disease and cancer mortality by study area

HRs are calculated per 1.0 mmol/L higher usual random plasma glucose. Results are stratified by age-at-risk and sex and adjusted for education, smoking, alcohol, physical activity, body mass index, waist and hip circumference and systolic blood pressure. Participants with screen-detected diabetes at baseline are excluded. Squares represent the HR with area inversely proportional to the variance of the log HR. Horizontal lines represent the corresponding 95% CI. The open diamond represents the overall HR and its 95% CI.

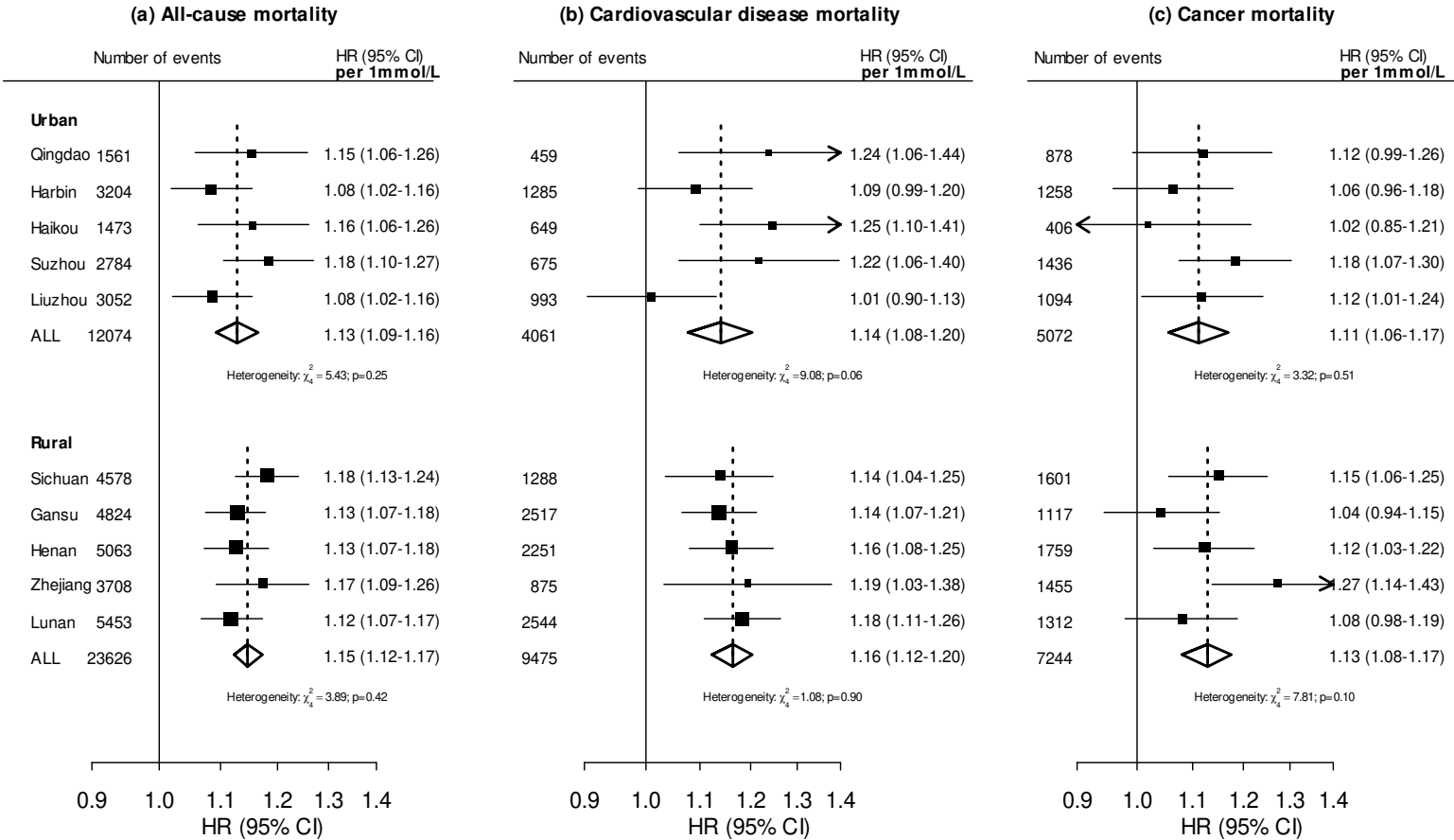


Figure S7. Associations of usual random plasma glucose with liver disease mortality

HRs are presented stratified by age-at-risk, sex and study area and adjusted for education, smoking, alcohol, physical activity, body mass index, waist and hip circumference and systolic blood pressure. HRs are plotted against mean usual RPG level in each category. Squares represent the HR with area inversely proportional to the variance of the log HR. Grey squares represent the HR among participants with screen-detected diabetes (baseline RPG ≥ 11.1 mmol/L). Vertical lines indicate the 95% CI. RPG=random plasma glucose.

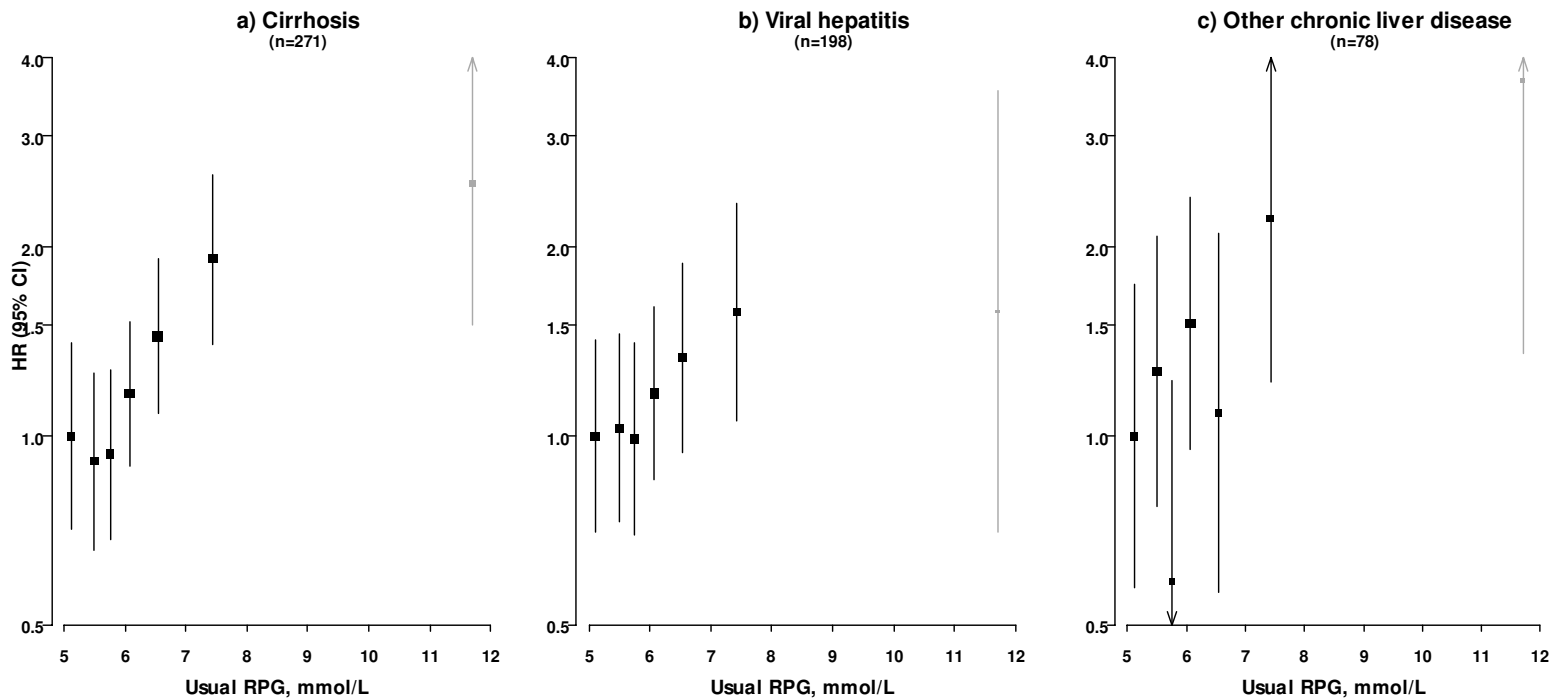


Figure S8. Associations of usual random plasma glucose with respiratory disease mortality

HRs are presented stratified by age-at-risk, sex and study area and adjusted for education, smoking, alcohol, physical activity, body mass index, waist and hip circumference and systolic blood pressure. HRs are plotted against mean usual RPG level in each category. Squares represent the HR with area inversely proportional to the variance of the log HR. Vertical lines indicate the 95% CI. Grey squares represent the HR among participants with screen-detected diabetes (baseline RPG ≥ 11.1 mmol/L). COPD=chronic obstructive pulmonary disease; RPG=random plasma glucose.

