

## Appendices

### Appendix A: Diagnosis and Procedure Codes for CVEs and comorbidities

	<b>Diagnosis/Procedure Codes</b>
Type 2 diabetes mellitus	ICD-9-CM codes: 250.x0, 250.x2
Pregnancy or delivery	ICD-9-CM: 630-679, V22-V24, V27-V28, V61.6, V61.7 ICD-9 procedure codes: 72.xx-75.xx; CPT codes: 59000-59899, 76801-76828, 83661-83664)
Myocardial infarction	ICD-9-CM: 410.xx
Unstable angina	ICD-9-CM: 411.1x, 411.8x
Ischemic stroke	ICD-9-CM: 433.x1, 434.x1
Coronary artery bypass graft	CPT: 33510-33514, 33516-33519, 33521-33523, 33530, 33533-33536 HCPCS: S2205-S2209 ICD-9-CM: 36.10-36.17, 36.19
Transient ischemic attack	ICD-9-CM: 435.0x, 435.1x, 435.8x, 435.9x
Percutaneous coronary intervention	ICD9: 00.66, 36.06, 36.07, 17.55, 00.45-00.48 CPT: 92920,92921, 92924, 92925,92928,92929, 92933,92934,92937,92938,,92941,92943,92944 929,73, 92980, 92981, 92982, 92984, 92995, 92996 HCPCS: G0290, G0291
Hypertension	401.xx-405.xx,416.0x,459.3x, 572.3x,437.2x
Peripheral arterial disease	ICD-9-CM: 440.0x-440.4x, 440.8x-440.9x, 443.81, 443.9x, 444.xx,445.xx
Abdominal aortic aneurysm	ICD-9-CM: 441.3x-441.4x
Ischemic heart disease	414.xx
Stable angina	413.xx

CPT: Current Procedural Terminology; HCPCS: Healthcare Common Procedural Coding

System; ICD-9-CM: International Classification of Diseases, Ninth Revision, Clinical

Modification

## Appendix B: Statin treatment intensity definition

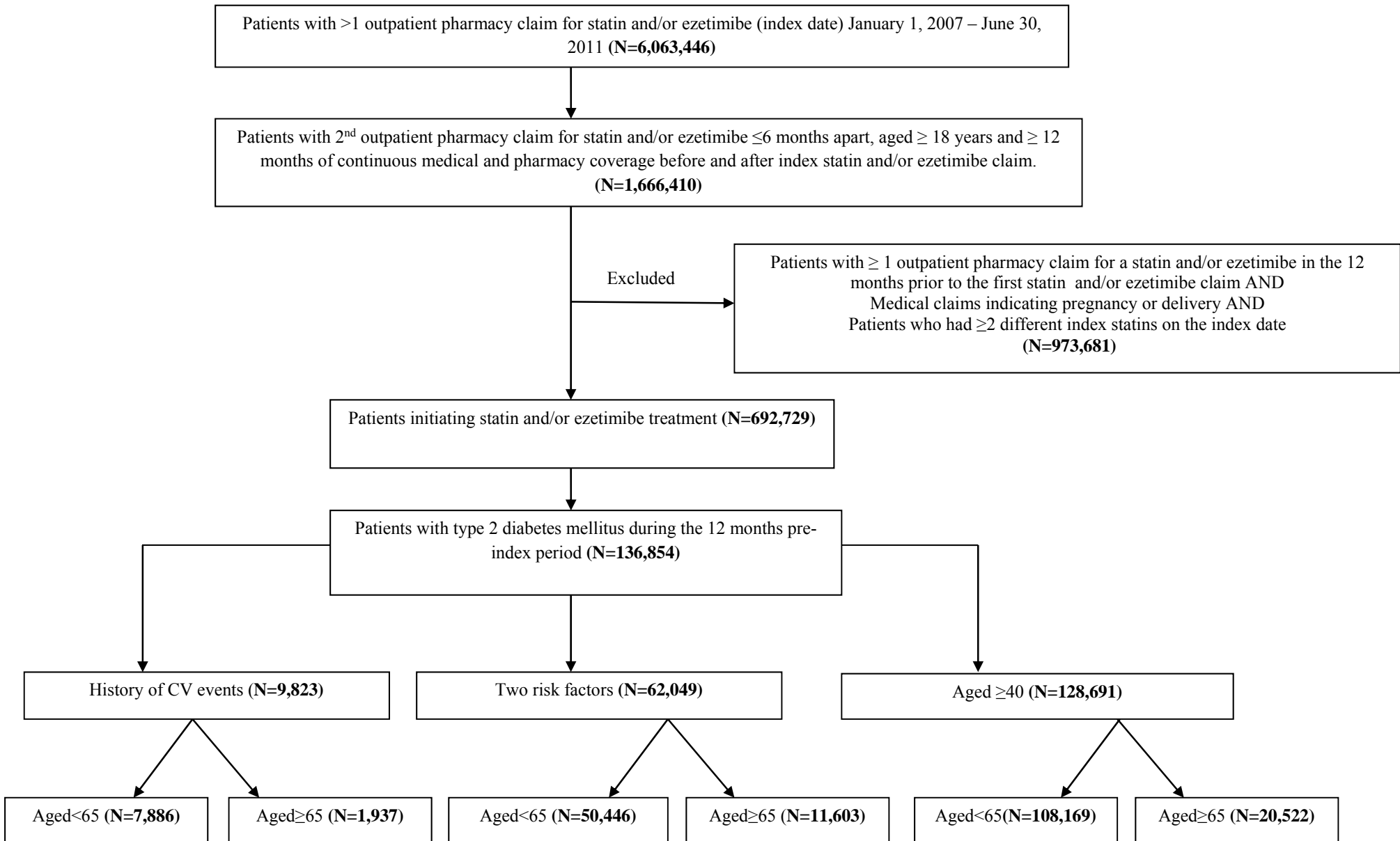
Statin treatment	Average daily dose*		
	Low-intensity	Moderate-intensity	High-intensity
Atorvastatin	n/a	<30	≥30
Fluvastatin	<60	≥60	n/a
Lovastatin	<30	≥30	n/a
Pitavastatin	<1.5	≥1.5	n/a
Pravastatin	<30	≥30	n/a
Rosuvastatin	n/a	<15	≥15
Simvastatin	<15	15-60	≥60

Adapted from the 2013 American Heart Association and American College of Cardiology guidelines on the treatment of blood cholesterol to reduce atherosclerotic cardiovascular risk in adults

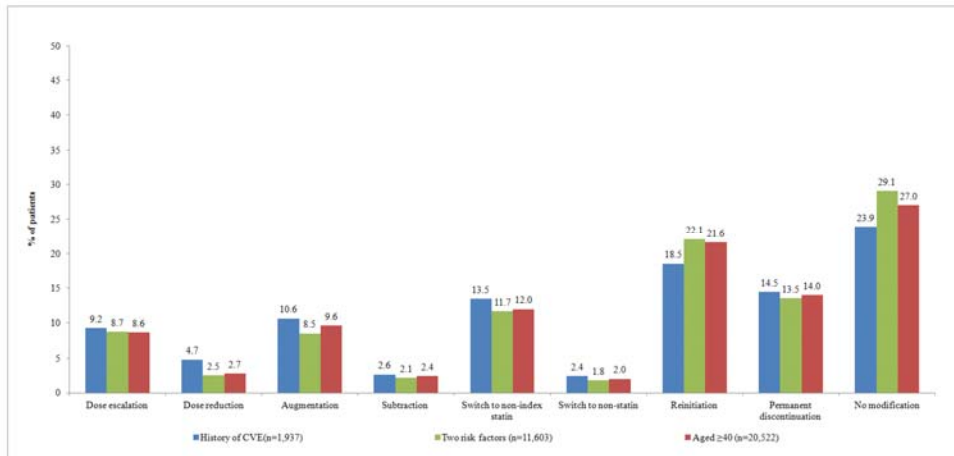
\*Average daily dose was used to determine initiation statin-intensity level and dose escalation/reduction (≥25%) over the follow-up period :

Average Daily Dose = (Strength of Statin \* Quantity) / Days of Supply

Appendix C. Attrition Figure

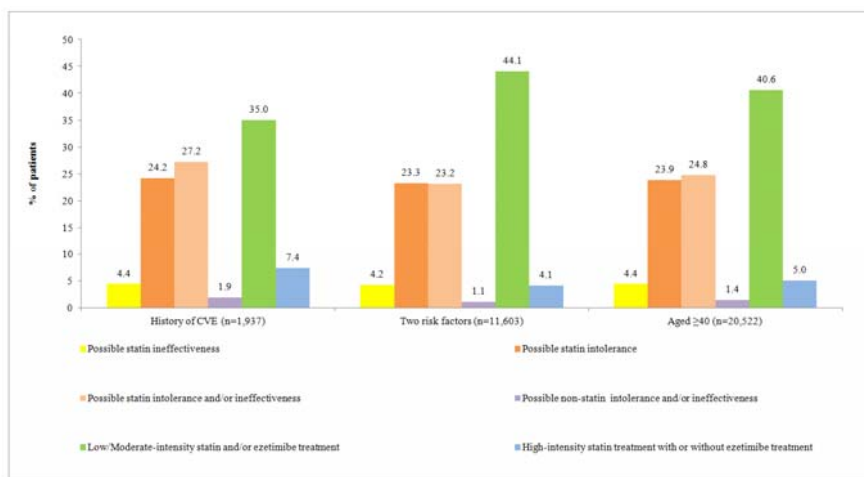


#### Appendix D. First treatment modification among type 2 diabetes patients at high risk for CVEs (aged $\geq 65$ )



CVE: cardiovascular event

#### Appendix E. Intensity of statin treatment and possible LLT intolerance and/or ineffectiveness among type 2 diabetes patients (aged $\geq 65$ ) with or without treatment modification(s)



CVE: cardiovascular event; LLT: lipid lowering treatment