

This Supplemental Information file includes:

SUPPLEMENTAL DATA:

SUPPLEMENTAL FIGURE S1

SUPPLEMENTAL TABLES S1-S2

SUPPLEMENTAL FIGURE

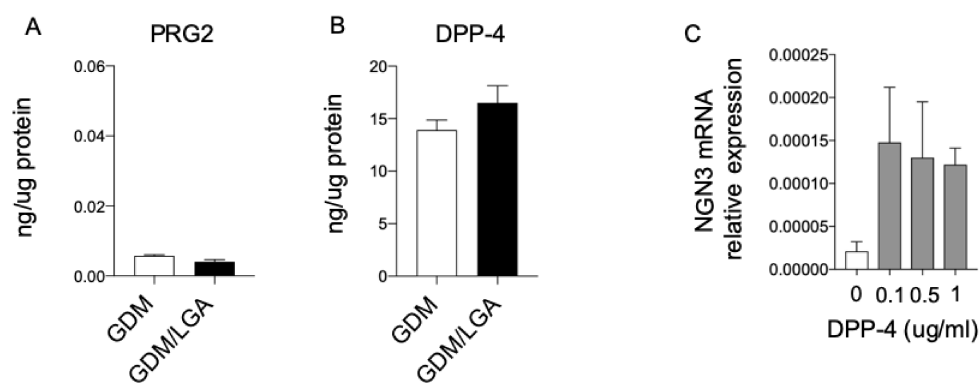


Figure S1. (A, B) Bar graphs represent PRG2 and DPP-4 levels measured by ELISA in placental lysates from GDM and GDM/LGA women. (C) Bar graph depicts normalized mRNA expression of NGN3 in Beta-1ox5 treated with different concentrations of DPP-4.

SUPPLEMENTAL TABLES

Supplemental Table 1. List of stem cell target genes analyzed by transcriptomic assay in h-ESC exposed to PRG2 and DPP-4.

UniGene	GenBank	Symbol
Hs.174249	NM_001265	CDX2
Hs.129452	NM_004392	DACH1
Hs.407015	NM_178120	DLX1
Hs.419	NM_004405	DLX2
Hs.643024	NM_006892	DNMT3B
Hs.534313	NM_004430	EGR3
Hs.208124	NM_000125	ESR1
Hs.444082	NM_004456	EZH2
Hs.163484	NM_004496	FOXA1
Hs.155651	NM_021784	FOXA2
Hs.431498	NM_032682	FOXP1
Hs.656280	NM_014491	FOXP2
Hs.247700	NM_014009	FOXP3
Hs.765	NM_002049	GATA1
Hs.514746	NM_005257	GATA6
Hs.111867	NM_005270	GLI2
Hs.152531	NM_004821	HAND1
Hs.110637	NM_018951	HOXA10
Hs.249171	NM_005523	HOXA11
Hs.445239	NM_006735	HOXA2
Hs.659337	NM_030661	HOXA3
Hs.446318	NM_006896	HOXA7
Hs.659350	NM_152739	HOXA9
Hs.99992	NM_002144	HOXB1
Hs.66731	NM_006361	HOXB13
Hs.654560	NM_002146	HOXB3
Hs.654456	NM_002147	HOXB5
Hs.514292	NM_024016	HOXB8
Hs.44276	NM_017409	HOXC10
Hs.381267	NM_173860	HOXC12
Hs.549040	NM_153633	HOXC4
Hs.549040	NM_018953	HOXC5
Hs.549040	NM_004503	HOXC6
Hs.549040	NM_006897	HOXC9
Hs.83465	NM_024501	HOXD1
Hs.123070	NM_002148	HOXD10
Hs.591609	NM_014621	HOXD4
Hs.73739	NM_000872	HTR7
Hs.196927	NM_016358	IRX4
Hs.505	NM_002202	ISL1
Hs.714791	NM_002228	JUN
Hs.715677	NM_016270	KLF2
Hs.376206	NM_004235	KLF4
Hs.23616	NM_001004317	LIN28B
Hs.129133	NM_002316	LMX1B
Hs.89404	NM_002449	MSX2
Hs.202453	NM_002467	MYC
Hs.661360	NM_024865	NANOG
Hs.574626	NM_002500	NEUROD1
Hs.534074	NM_172390	NFATC1
Hs.516922	NM_002509	NKX2-2

Hs.487360	NM_024408	NOTCH2
Hs.701977	NM_021005	NR2F2
Hs.176977	NM_005806	OLIG2
Hs.349082	NM_006192	PAX1
Hs.654464	NM_016734	PAX5
Hs.270303	NM_000280	PAX6
Hs.132576	NM_006194	PAX9
Hs.728886	NM_182649	PCNA
Hs.643588	NM_000325	PITX2
Hs.137568	NM_005029	PITX3
Hs.654522	NM_006237	POU4F1
Hs.266	NM_004575	POU4F2
Hs.249184	NM_002701	POU5F1
Hs.162646	NM_015869	PPARG
Hs.408528	NM_000321	RB1
Hs.149261	NM_001754	RUNX1
Hs.101937	NM_016932	SIX2
Hs.12253	NM_005901	SMAD2
Hs.518438	NM_003106	SOX2
Hs.368226	NM_033326	SOX6
Hs.647409	NM_000346	SOX9
Hs.620754	NM_138473	SP1
Hs.642990	NM_007315	STAT1
Hs.463059	NM_003150	STAT3
Hs.381715	NM_181486	TBX5
Hs.385870	NM_003212	TDGF1
Hs.492203	NM_198253	TERT
Hs.249125	NM_021025	TLX3
Hs.524368	NM_000376	VDR
Hs.632050	NM_000553	WRN
Hs.591980	NM_000378	WT1
Hs.431009	NM_012082	ZFPM2
Hs.598590	NM_003412	ZIC1
Hs.520640	NM_001101	ACTB
Hs.534255	NM_004048	B2M
Hs.592355	NM_002046	GAPDH
Hs.412707	NM_000194	HPRT1
Hs.546285	NM_001002	RPLP0

Supplemental Table 2. List of stem cell target genes analyzed by qRT-PCR analysis in h-ESC exposed to PRG2 and DPP-4.

Gene Symbol	UniGene #	Refseq Accession #	Amplicon Length (bp)
POU5F1 (OCT4)	Hs04260367	NM_001173531	77
CDH1 (ECAD)	Hs01023894	NM_001317184	61
FGF4	Hs00173564	NM_002007	53
CER1	Hs00193796	NM_005454	92
FOXA2	Hs00232764	NM_021784	66
NGN3	Hs01875204	NM_020999	127
ACTB	Hs99999903	NM_001101	171