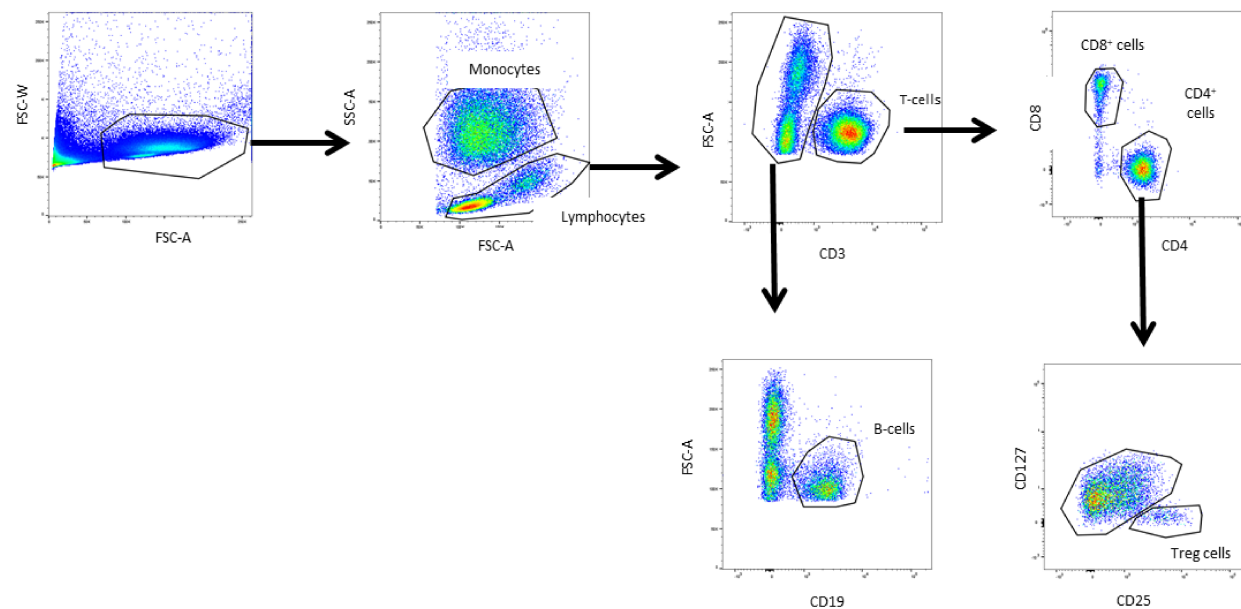


Figure S1 - Gating strategy of the flow cytometry analysis.

Monocytes and lymphocytes were gated based on forward and side scatter plots. Among CD3-negative cells, B cells were identified based on CD19 expression. T cells were identified by CD3 expression. From total T cells, CD8⁺ T cells were identified based on CD8 expression while CD4⁺ T cells were identified based on CD4 expression. Regulatory T cells (Treg) were identified from CD4⁺ T cells by low expression of CD127 and high expression of CD25.