

Figures

15

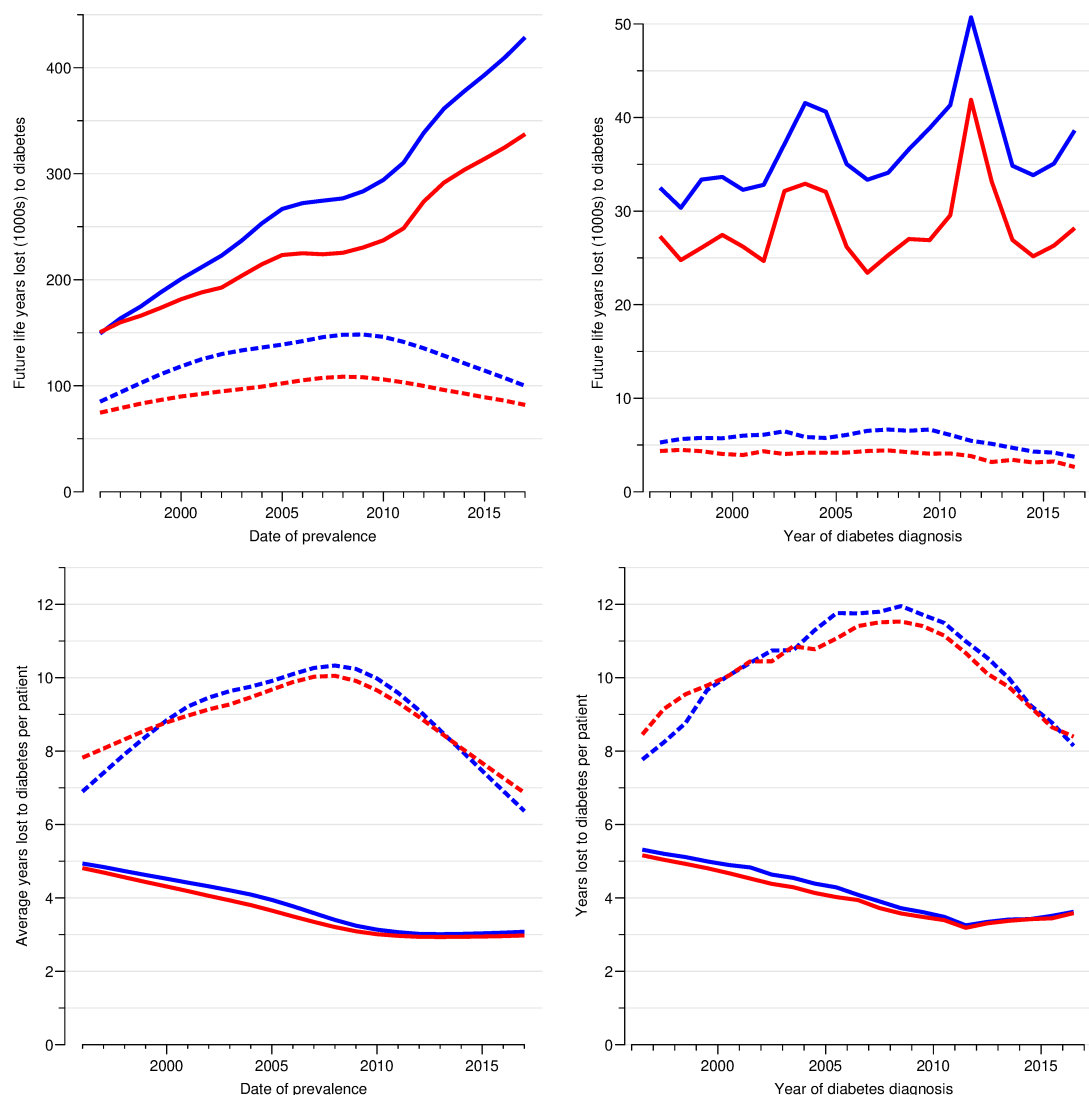


Figure ESM 2: *Upper panels* Total future years of life lost among all currently prevalent diabetes patients at each 1 January (left) and among newly diagnosed patients during calendar year (right).

Lower panels Average future years of life lost among currently prevalent diabetes patients each 1 January (left) and among patients diagnosed during each calendar year (right). Red lines are women, blue lines are men, broken lines are type 1 diabetes and solid lines are full type 2 diabetes.