

## Figures

17

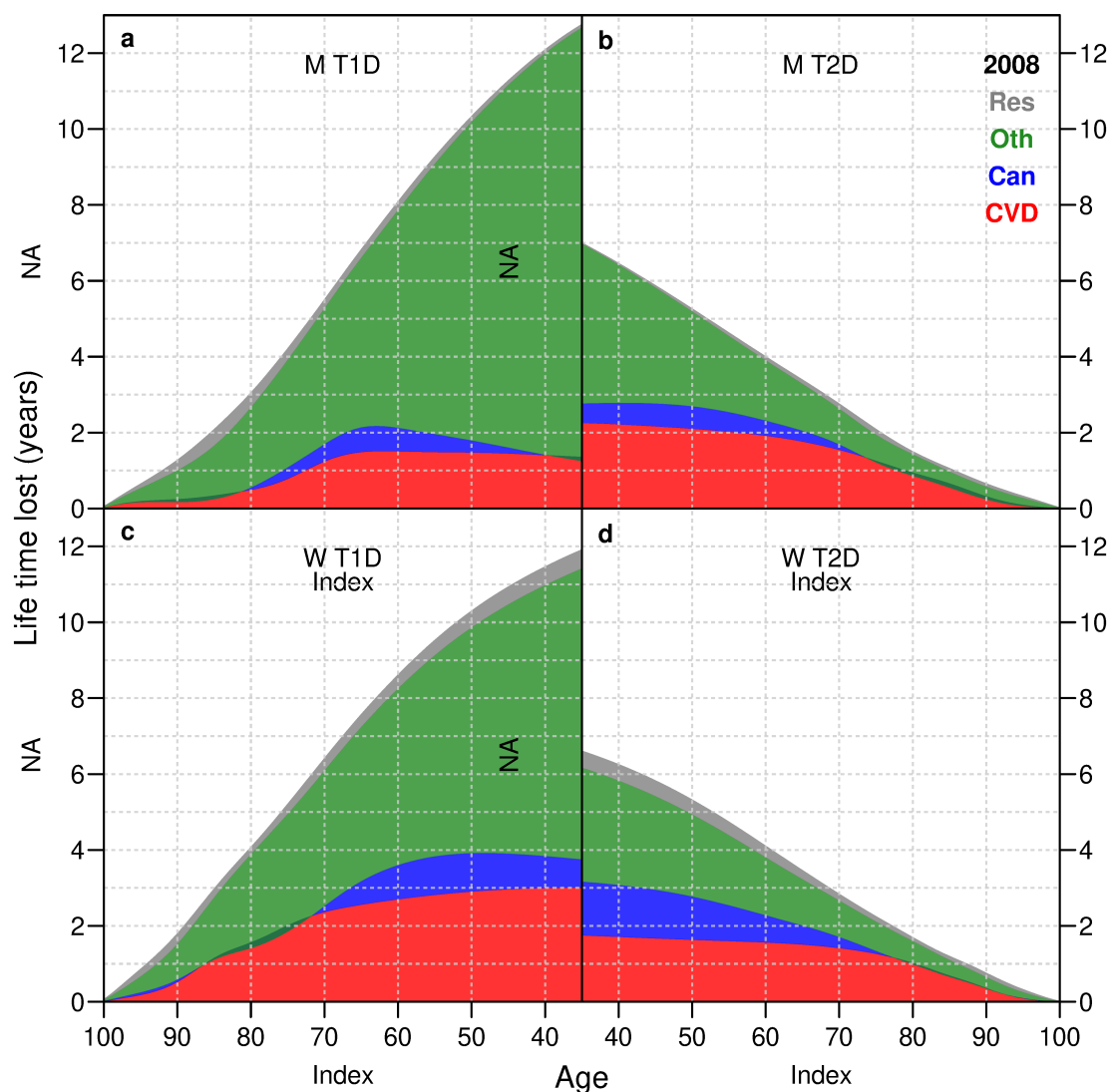


Figure ESM 4: Years of life lost to different causes of death at 1 January 2008 by sex, type of diabetes and age.

The dark green areas in panels a and c is equal to the negative years of life lost to cardiovascular disease in type 1 diabetes patients (it is the overlap of red, blue and gray areas), therefore part of both the CVD and the Other component.

a: Men, type 1 diabetes; b: Men, type 2 diabetes; c: Women, type 1 diabetes; d: Women, type 2 diabetes.

Colors: gray: Respiratory causes; green: other causes; blue: cancer; red: CVD.