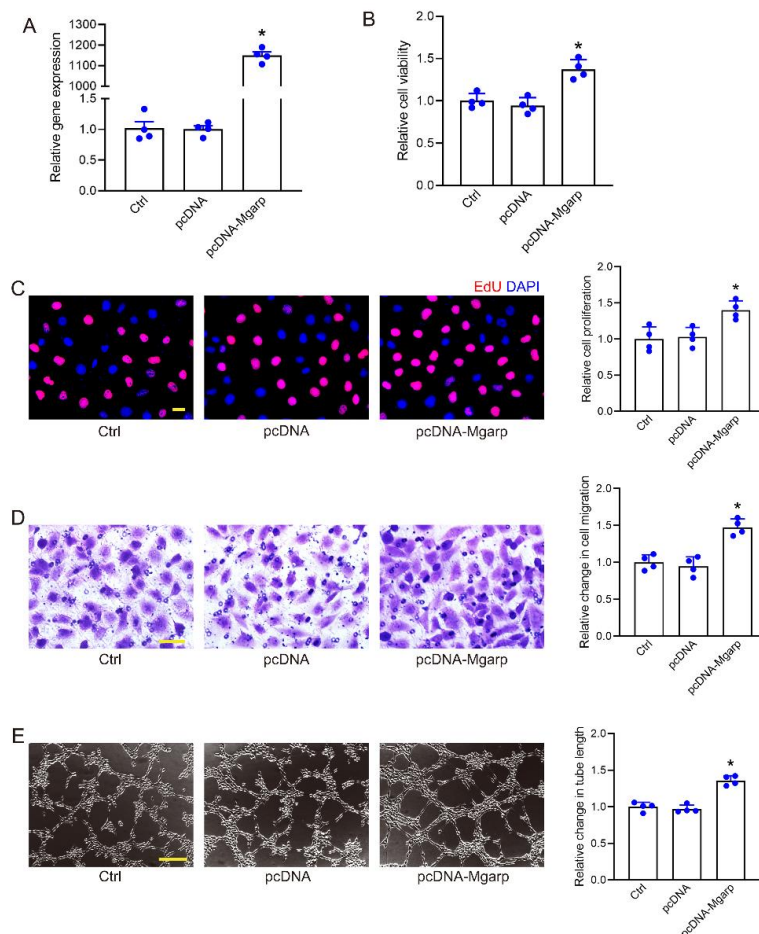


## Supplementary Figure



**Figure S1. Mgarp overexpression enhanced the angiogenic effects of endothelial cells**

(A) HRMECs were transfected with null vector plasmid (pcDNA3.1), Mgarp overexpression plasmid (pcDNA3.1-Mgarp), or left untreated (Ctrl) for 24 h. The levels of Mgarp expression were detected by qRT-PCRs.  $n = 4$ ,  $*P < 0.05$ . (B) Cell viability was determined using CCK-8 method.  $n = 4$ ,  $*P < 0.05$ . (C) Cell proliferation was detected using EdU staining assay.  $n = 4$ ,  $*P < 0.05$ , Scale bar: 20  $\mu\text{m}$ . (D) Transwell assays were conducted to detect cell migration ability.  $n = 4$ ,  $*P < 0.05$ , Scale bar: 50  $\mu\text{m}$ . (E) Tube formation assays were conducted performed to determine tube formation ability of HRMECs.  $n = 4$ ,  $*P < 0.05$ , Scale bar: 100  $\mu\text{m}$ .